

## ENDOALERT™ ENDOTOXIN PLATE KITS

Endotoxin testing can be useful wherever there is a need to evaluate the integrity of biological and environmental samples used in research, such as human or veterinary bacterial infections, water and air quality, or even the shelf life of foods.

Our EndoAlert™ Endotoxin Kits were designed specifically for research and adaptation in CLIA labs\* and are based on a kinetic chromogenic LAL reagent that is measured at 405 nm for a more sensitive and quantitative assay than gel clot.

### WHY ENDOALERT KITS?



#### Easy to Use

A user-friendly protocol designed for research and clinical use eliminates the need to use complicated, USP-regulated test.



#### Sensitive

Sensitivity comparable to any Pharma-certified kits on the market and more sensitive, stable, and functionally superior than any research-use kits.



#### Environmentally Sound

Raw material is collected with a high degree of care and is monitored by the Department of Natural Resources to ensure state and federal compliance.



#### Lower Cost per Assay

Designed with a lean-and-mean approach to development resulting in a lower cost per assay.



#### US Sourced

Every component of the kits is US-sourced and manufactured for a secure supply chain.



#### Strong Technical Support

Direct access to the manufacturers of these kits ensures the highest level of technical support possible.

### SUITABLE SAMPLE TYPES



Water & Buffers



Serums & Plasma



Nucleic Acids



Synovial & Cerebral Spinal Fluid



DNA Plasmid Preparations



Urine



Enzymes, Proteins & Peptides



Veterinary Studies



Cell Cultures



Soil & Agriculture



Ovalbumin



Food Processing

\*Kits can potentially be used for CLIA applications. Contact Rockland for additional help and resources regarding test qualifications.

## KIT COMPONENTS

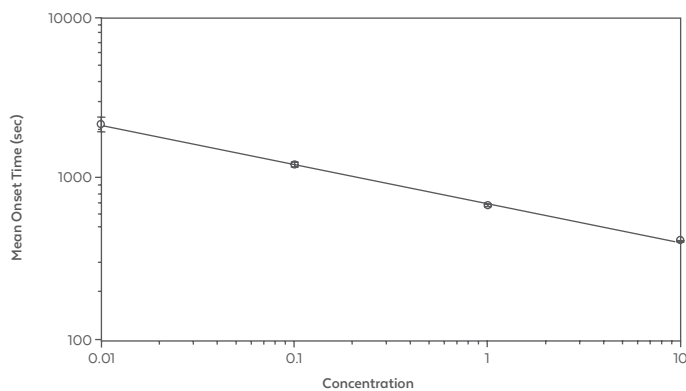
Rockland offers two endotoxin testing kits for research use only (RUO). Both kits utilize Limulus ameobocyte lysate (LAL), an aqueous extract of blood cells from the horseshoe crab (*Limulus polyphemus*) that reacts with LPS.

Product	Chromogenic Lysate	Endotoxin Standard	LAL Reagent Water	Endotoxin Specific Constitution buffer	96 well microtiter plate
EndoAlert™ KIT	✓	✓	✓	X	✓
EndoAlert™ ES KIT	✓	✓	✓	✓	✓

Both kits are based on a kinetic chromogenic LAL reagent that is measured at 405 nm and is more sensitive and quantitative than gel clot. The EndoAlert™ Endotoxin Plate Kit is reconstituted with LAL Reagent Water and reacts with both LPS (endotoxin) and B-D-glucan (fungal contaminants).

The EndoAlert™ ES Endotoxin Plate Kit is reconstituted with Endotoxin Specific Constitution Buffer which inactivates and blocks the Factor G pathway (fungal). The Factor C (LPS binding protein) pathway is left intact making this an endotoxin-specific assay.

## STANDARD CURVE DATA



**Figure 1.** Sample Standard Curve EndoAlert Endotoxin Plate Kit: Mean Time (sec) vs. Concentration (EU/mL)

Log-Log fit:  $\text{Log}(y) = A + B * \text{Log}(x)$

A	B	R <sup>2</sup>
2.86	-0.239	0.999

Data obtained with Molecular Devices SpectraMax Plus and SoftMax Pro 4.5.6. Software Actual values may vary. This data is for example purposes only.

$\text{RSD}\% = (\text{SD} / \text{Average Reaction Time}) * 100$

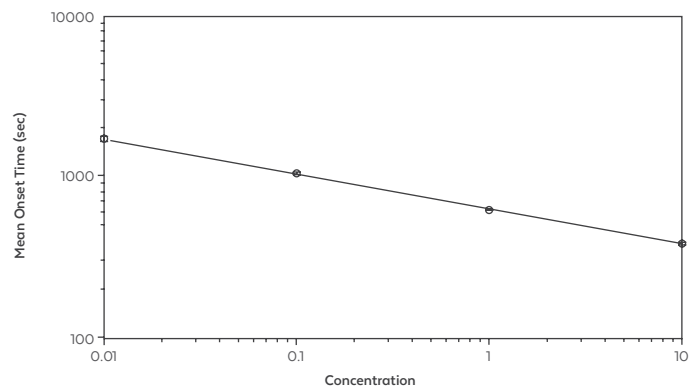
**Figure 2.** Sample Standard Curve EndoAlert ES Endotoxin Plate Kit: Mean Time (sec) vs. Concentration (EU/mL)

Log-Log fit:  $\text{Log}(y) = A + B * \text{Log}(x)$

A	B	R <sup>2</sup>
2.8	-0.215	1

Data obtained with Molecular Devices SpectraMax Plus and SoftMax Pro 4.5.6. Software Actual values may vary. This data is for example purposes only.

$\text{RSD}\% = (\text{SD} / \text{Average Reaction Time}) * 100$



Kits are developed by Trident BioSystems and manufactured by Beacon Analytical. For research use only.