

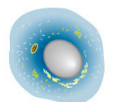
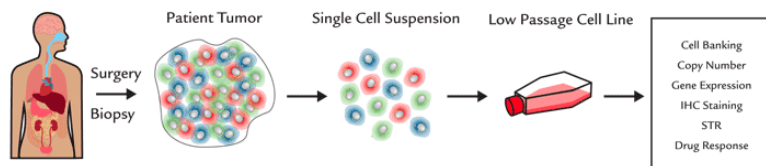


Cancer Research

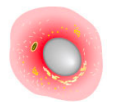
Melanoma Cell Lines, ATM,
AKT, NCI, MEK/ERK, PARP1,
PTM, GFP & Epitopes, and
Supporting Reagents

MELANOMA CELL LINES

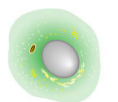
Rockland produces, validates, and distributes a diverse collection of highly- characterized melanoma cell line models. Because they are biologically stable in terms of gene expression pattern, tumor architecture, and mutation status, these models have the ability to predict clinical activity. They can also serve as individualized experimental models, which is useful for drug treatment and outcome. Originally sourced by Dr. Meenhard Herlyn of The Wistar Institute, this collection has been characterized to confirm a match to the originating patient tumor tissue via mRNA, qPCR, and DNA short tandem repeat (STR) analysis.



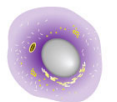
Melanoma Cell Lines with Mutated BRAF



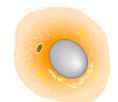
Melanoma Cell Lines with Mutated N-RAS



Melanoma Cell Lines with Mutated KIT



Melanoma Cell Lines with Mutated PTEN

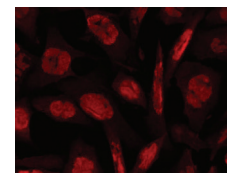
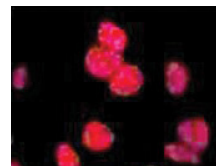


Melanoma Cell Lines with Mutated CDK4

ATM ANTIBODIES & PEPTIDES

Product	Host	Application	Catalog #
Anti-ATM Protein Kinase pS1981 Monoclonal	Mouse	ELISA, WB, IHC, IF	200-301-400
Anti-ATM Protein Kinase S1981	Rabbit	ELISA, WB	600-401-398
Anti-ATM Protein Kinase pS1981 Monoclonal	Mouse	ELISA, WB, IHC, FC	200-301-500
Anti-ATM Protein Kinase pS1981 Monoclonal Peroxidase Conjugated	Mouse	ELISA, WB, IHC	200-303-400
Anti-ATM Protein Kinase pS1981 Monoclonal Biotin Conjugated	Mouse	ELISA, WB, IHC	200-306-400
Anti-ATM Protein Kinase pS1981	Sheep	ELISA, WB	600-601-400
ATM S1981 Peptide	-		000-000-398
ATM pS1981 Peptide	-		000-000-400

Anti-ATM Protein Kinase pS1981 Monoclonal Peroxidase Conjugated 200-303-400 ▶



◀ Anti-ATM Protein Kinase pS1981 Monoclonal Biotin Conjugated 200-306-400

AKT ANTIBODIES

Antibody	Host	Application	Catalog #
Anti-AKT Monoclonal	Mouse	ELISA, WB, IHC, FC	200-301-B26
Anti-AKT	Rabbit	ELISA, WB, IHC, IF, FC	200-401-N98
Anti-AKT	Sheep	ELISA, WB, IHC, IF, FC	600-601-401
Anti-AKT pS473 Monoclonal	Mouse	ELISA, WB, IHC, IF, FC	200-301-B19
Anti-AKT pS473	Rabbit	ELISA, WB, IHC, FC	600-401-268
Anti-AKT pT308 Monoclonal	Mouse	ELISA, WB, IHC, FC	200-301-B25
Anti-AKT pT308	Rabbit	ELISA, WB, FC	600-401-269
Anti-AKT1 Monoclonal	Mouse	ELISA, WB, IHC, FC	200-301-I51
Anti-AKT2 Monoclonal	Mouse	ELISA, WB	200-301-BR8
Anti-AKT2	Rabbit	ELISA, WB, FC	600-401-425
Anti-AKT2 Monoclonal	Rat	ELISA, WB, IHC, FC	200-501-E71
Anti-AKT3 Monoclonal	Mouse	ELISA, WB, IHC, FC	200-301-E75
Anti-Calcineurin alpha	Mouse	ELISA, WB, IHC	200-301-P23
Anti-Cyclin A	Mouse	ELISA, WB, IHC	200-301-P30
Anti-Elk-1 pS383	Rabbit	ELISA, WB	600-401-D34
Anti-GAB1	Rabbit	ELISA, WB	200-401-G66
Anti-IP3 Receptor Monoclonal	Mouse	WB, IHC, IF	200-301-F77
Anti-p90 RSK2	Rabbit	WB	600-401-E30
Anti-PDK1	Rabbit	ELISA, WB, IHC	600-401-411
Anti-TAO2 pS181	Rabbit	WB	600-401-E41

NCI VALIDATED ANTIBODIES

Antibody	Host	Application	Catalog #
Anti-ABCB6	Rabbit	ELISA, WB	600-401-945
Anti-AHA1	Rabbit	ELISA, WB, IHC	600-401-974
Anti-Bach2	Rabbit	ELISA, WB	600-401-H35
Anti-BrdU Monoclonal	Mouse	ELISA, WB, IHC, IF, FC	200-301-H50
Anti-c-MET pY1349 pY1356	Rabbit	ELISA, WB	600-401-989
Anti-Cripto-1 (TDGF1)	Rabbit	ELISA, WB, IHC	600-401-997
Anti-FKBP8	Rabbit	ELISA, WB, IHC	200-401-A58
Anti-Glypican-1	Rabbit	ELISA, WB, IHC	200-401-B44
Anti-IdU Monoclonal	Mouse	ELISA, WB, IHC, IF, FC	200-301-H51
Anti-IL-7 Receptor alpha chain pY449	Rabbit	ELISA, WB, IHC	600-401-A49
Anti-Lac I	Rabbit	ELISA, WB	600-401-B04
Anti-Mesothelin Monoclonal	Mouse	ELISA, WB, IHC	200-301-A87
Anti-MLF1 Interacting Protein (internal)	Rabbit	ELISA, WB, IHC	600-401-923
Anti-Myosin 1G	Rabbit	ELISA, WB	600-401-959
Anti-Pdcd4	Rabbit	ELISA, WB, IHC	600-401-965
Anti-Pogz	Rabbit	ELISA, WB	600-401-A89
Anti-RNF25	Rabbit	ELISA, WB	600-401-969
Anti-SMAD3 pS423 pS425	Rabbit	ELISA, WB, IHC, FC	600-401-919
Anti-SMAD3 pT179	100 µg	ELISA, WB	600-401-C48
Anti-Thyroid Hormone Receptor alpha	100 µg	ELISA, WB, IHC, IF	600-401-A38

MEK ANTIBODIES, PROTEINS AND PEPTIDE CONTROLS

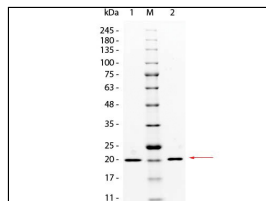
Product	Host	Application	Catalog #
Anti-MEK2 Monoclonal	Mouse	ELISA, WB	200-301-GN8
Anti-MEK1 pS222 Monoclonal	Mouse	ELISA, WB	200-301-GP4
Anti-MEK1 Monoclonal	Mouse	ELISA, WB	200-301-GQ0
Anti-MEK2 Monoclonal	Mouse	ELISA, WB	200-301-GQ2
Anti-MEK2 pS226 Monoclonal	Mouse	ELISA, WB	200-301-GR4
Anti-MEK1/2 pS218/pS222	Rabbit	WB	600-401-C84
Anti-MEK1 pT292	Rabbit	WB	600-401-D72
Anti-MEK1 pT386	Rabbit	WB	600-401-D73
Anti-MEK1	Rabbit	ELISA, WB	600-401-GN7
Anti-MEK2	Rabbit	ELISA, WB, IHC	600-401-GN8
Anti-MEK1	Rabbit	ELISA, WB, IHC	600-401-GQ0
Anti-MEK2	Rabbit	ELISA, WB, IHC	600-401-GQ2
Anti-ERK/MAPK	Rabbit	ELISA, WB	612-401-D38
MEK1 N-Term Blocking Peptide	-	WB	000-001-GN7
MEK2 N-Term Blocking Peptide	-	WB	000-001-GN8
MEK1 C-Term Blocking Peptide	-	WB	000-001-GQ0
MEK2 C-Term Blocking Peptide	-	WB	000-001-GQ2
MEK1 pS218-pS222 Human Recombinant Protein	-	WB	009-001-GP5
MEK1 Human Recombinant Protein	-	WB	009-001-GQ3
MEK2 Human Recombinant Protein	-	WB	009-001-GQ4

ERK ANTIBODIES, PROTEINS AND PEPTIDE CONTROLS

Product	Host	Application	Catalog #
Anti-Erk2	Rabbit	ELISA, WB	100-401-218
Anti-Erk1/2	Rabbit	WB, FC, IHC	100-401-F25
Anti-ERK2 Monoclonal	Mouse	ELISA, WB	200-301-GQ1
Anti-ERK/MAPK pT202/pY204	Rabbit	WB, IHC	600-401-C76
Anti-ERK1	Rabbit	ELISA, WB	600-401-GP0
Anti-ERK2	Rabbit	ELISA, WB	600-401-GP1
Anti-ERK1	Rabbit	ELISA, WB	600-401-GP9
Anti-ERK2	Rabbit	ELISA, WB	600-401-GQ1
ERK1 N-Term Blocking Peptide	-	WB	000-001-GP0
ERK2 C-Term Blocking Peptide	-	WB	000-001-GP1
ERK1 C-Term Blocking Peptide	-	WB	000-001-GP9
ERK1 pT202-pY204 Human Recombinant Protein	-	WB	009-001-GP8
ERK1 Human Recombinant Protein	-	WB	009-001-GQ8
ERK2 Human Recombinant Protein	-	WB	009-001-GQ9
ERK2 pT185-pY187 Human Recombinant Protein	-	WB	009-001-GR0
ERK1 Double Mutant Human Recombinant Protein	-	WB	009-001-GR1
ERK2 Double Mutant Human Recombinant Protein	-	WB	009-001-GR2
ERK1 (K71A) Recombinant Protein-HIS Epitope	-	WB	009-001-R91

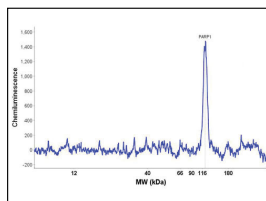
PARP1 ANTIBODIES AND PROTEINS

Product	Host	Application	Catalog #
Anti-PARP Monoclonal	Mouse	WB, FC	200-301-I03
Anti-PARP1 (internal)	Rabbit	WB	200-401-X51
Anti-PARP1 (N-term ZF1)	Rabbit	WB	200-401-GM8
PARP1 (internal) Control Protein	-		009-001-X51
PARP1 (N-term ZF1) Control Protein	-		009-001-GM8
PARP1 (internal) Set	-		KCC-X51
PARP1 (N-term ZF1) Set	-		KCC-GM8
PARP1 (internal) Combo Pack	-	WB	K-X51
PARP1 (N-term ZF1) Combo Pack	-		K-GM8



Anti-PARP1 (N-term ZF1)
RB
200-401-GM8

PARP1 (internal)
Control Protein
009-001-X51



PTM- SPECIFIC ANTIBODIES

Product	Host	Application	Catalog #
Anti-ATG13 pS318	Rabbit	ELISA, WB, FC	600-401-C49
Anti-Aurora B pT232	Rabbit	ELISA, WB, IF	600-401-677
Anti-CREB pS133	Rabbit	ELISA, WB, IHC	600-401-270
Anti-DNA PKcs pT 2609	Rabbit	ELISA, WB	600-401-494
Anti-GluR1 pS84	Rabbit	ELISA, WB, IHC, IF	612-401-C83
Anti-Histone H2AvD pS137	Rabbit	ELISA, WB, IHC	600-401-914
Anti-Histone H3 [Trimethyl Lys56]	Rabbit	WB, IHC, IF, IP, ChIP	600-401-I94
Anti-Histone H4 [ac Lys16]	Rabbit	WB, IHC, IF, IP, ChIP	600-401-J00
Anti-MARK2 pT595	Rabbit	ELISA, WB, IF	600-401-895
Anti-MeCP2 pS421	Rabbit	ELISA, WB	600-401-X14
Anti-mTOR pS2448	Rabbit	ELISA, WB, IHC	600-401-422
Anti-Myosin pS19/pS20	Rabbit	ELISA, WB, IHC	600-401-416
Anti-NF2 (Merlin) pS518	Rabbit	ELISA, WB, IHC	600-401-414
Anti-NFKB p65 (Rel A) pS276	Rabbit	ELISA, WB	600-401-264
Anti-NFKB p65 (Rel A) pS536	Rabbit	ELISA, WB, IHC	600-401-265
Anti-p38 MAPK pT180/pY182	Rabbit	WB, IHC	600-401-C90
Anti-PPAR gamma pS273	Rabbit	ELISA, WB	600-401-J94
Anti-REDD1 pT23/25	Rabbit	ELISA, WB	600-401-X24
Anti-SMC1 pS957 Monoclonal	Mouse	ELISA, WB, IF	200-301-397
Anti-STAT5 pY694 Monoclonal	Mouse	ELISA, WB, IHC, IF	200-301-A45

CANCER RESEARCH ANTIBODIES

Product	Host	Application	Catalog #
Anti-ABCB1	Rabbit	ELISA, WB, IHC	600-401-967
Anti-ABCB5	Rabbit	ELISA, WB, IHC	600-401-A77
Anti-AKT	Rabbit	ELISA, WB, IHC, IF, FC	100-401-401
Anti-AKT pT308 Monoclonal	Mouse	ELISA, WB, IHC, FC	200-301-269
Anti-Bim	Mouse	ELISA, WB, IF	200-301-Z72
Anti-BrdU	Rabbit	ELISA, WB, IHC, IF, FC	600-401-C29
Anti-CD20 Monoclonal	Rabbit	ELISA, WB, IHC, FC	200-C01-B40
Anti-HIG2	Rabbit	ELISA, WB	600-401-BR3
Anti-Hsc70 (Hsp73) Monoclonal	Mouse	ELISA, WB, IHC	200-301-A28
Anti-HSP27 Monoclonal	Mouse	ELISA, WB	200-301-243
Anti-IDO1 Monoclonal	Mouse	ELISA, WB, IHC, IF	200-301-E57
Anti-IQSEC1	Rabbit	ELISA, WB	600-401-BY9
Anti-MAGP-2	Rabbit	ELISA, WB	600-401-937
Anti-MECT1	Rabbit	ELISA, WB	600-401-936
Anti-Mesothelin Monoclonal	Mouse	ELISA, WB, IHC	200-301-A88
Anti-MTBP (Ascites) Monoclonal	Mouse	ELISA, WB	500-301-875
Anti-NAG-1 (H variant) Monoclonal	Mouse	ELISA, WB	200-301-B08
Anti-Plasminogen Activator Inhibitor 2	Rabbit	ELISA, WB, IHC	600-401-B22
Anti-TET1	Rabbit	ELISA, WB, IHC, IF	600-401-FC8
Anti-TRPC6 Monoclonal	Mouse	ELISA, WB, IHC	200-301-B59

GFP & EPI TOPE TAG ANTIBODIES

Product	Host	Application	Catalog #
Anti-6X HIS EPI TOPE TAG Monoclonal	Mouse	ELISA, WB	200-301-382
Anti-6X HIS EPI TOPE TAG	Rabbit	ELISA, WB, IHC	600-401-382
Anti-BETA GALACTOSIDASE (<i>E. coli</i>)	Rabbit	ELISA, WB, IHC	100-4136
Anti-BIOTIN	Rabbit	ELISA, WB, IHC	100-4198
Anti-B-PHYCOERYTHRIN	Rabbit	ELISA, WB, IHC	200-401-099
Anti-GFP	Chicken	ELISA, WB, IHC, IF	600-901-215
Anti-GFP	Goat	ELISA, WB, IHC, IF	600-101-215
Anti-GFP Monoclonal	Mouse	ELISA, WB, IHC, IF, FC	600-301-215
Anti-GFP	Rabbit	ELISA, WB, IHC, IF, FC	600-401-215
Anti-GST	Goat	ELISA, WB, IHC	600-101-200
Anti-KLH	Rabbit	ELISA, WB, IHC	600-401-466
Anti-LUCIFERASE	Goat	ELISA, WB, IHC, IF	200-101-C44
Anti-mCherry Pre-Adsorbed	Rabbit	ELISA, WB, IHC, IF	600-401-P16
Anti-RFP	Chicken	ELISA, WB	600-901-379
Anti-RFP Monoclonal	Mouse	ELISA, WB, IF, FC	200-301-379
Anti-RHODAMINE Monoclonal	Mouse	ELISA, WB, IHC	200-301-246
Anti-R-PHYCOERYTHRIN	Goat	ELISA, WB, IHC	600-101-387
Anti-STREPTAVIDIN	Rabbit	ELISA, WB, IHC	100-4195
Anti-V5 EPI TOPE TAG	Rabbit	ELISA, WB, IHC	600-401-378
Anti-VSV-G EPI TOPE TAG	Rabbit	ELISA, WB, IHC, IF	600-401-386

SUPPORTING REAGENTS

Product	Size	Application	Catalog #
Blocking Buffer for Fluorescent Western Blotting	500 mL	WB	MB-070
BLOTTO Immunoanalytical Grade (Non-Fat Dry Milk)	500 g	ELISA, WB, IF	B501-0500
BOVINE SERUM ALBUMIN 30% Solution	500 mL	ELISA, FLISA, WB, IHC, IF	BSA-30
BOVINE SERUM ALBUMIN- Fraction V (Immunoglobulin and Protease Free)	50 g	ELISA, FLISA, WB, IHC, IF, FC	BSA-50
Chemiluminescent FemtoMax™ Super Sensitive HRP Substrate for Microwell and/or Membrane	110 mL	ELISA, WB	FEMTOMAX-110
Chemiluminescent Western Blot Kit: DYKDDDDK (FLAG®) Chemiluminescent Western Blotting Kit	1 Kit	WB	KCA383
ELISA Microwell Coating Stabilizer (Azide and Mercury Free)	1000 mL	ELISA	MB-063-1000
Molecular Biology Grade UltraPure Water	1 L		MB-010-1000
NORMAL MS SERUM (NMS)	10 mL	ELISA, WB	B308
Opal Prestained Protein Standard 10-180kDa	µL		MB-209-0500
10X PBS pH 7.2 (0.2 M Potassium Phosphate 1.5 M Sodium Chloride)	1 L	ELISA, WB	MB-008
10X SDS-PAGE Running Gel Buffer (0.25 M Tris, 1.92 M Glycine, 1.0% SDS pH 8.3)	1 L		MB-017
SEPHAROSE™ PROTEIN A	5 mL		PA50-00-0005
10X TTBS pH 7.5 (1.0 M Tris HCl 1.5 M Sodium Chloride 0.1% (v/v) Tween-20)	1 L	ELISA, WB	MB-013

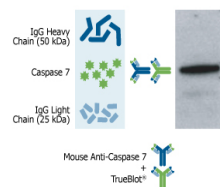
Product	Size	Application	Catalog #
STREPTAVIDIN	5 mg	ELISA, WB, IP, GS, ChIP, Other	S000-01
TMB ELISA PEROXIDASE SUBSTRATE	100 mL	ELISA	TMBE-100
Revitablot™ Western Blot Stripping Buffer	500 mL	WB	MB-085-0500
UltraPure Sterile Water	1 L		MB-009-1000

TRUEBLOT® PRODUCTS

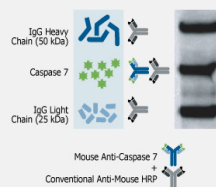
TrueBlot is a secondary antibody which enables unhindered detection of molecules. Simply substitute your conventional HRP or fluorescent reagent with mouse, rabbit, goat, or sheep TrueBlot for unparalleled clarity in results and high quality imaging suitable for reproduction.

Learn more at rockland.com/trueblot
















Mouse TrueBlot®



Conventional Anti-Mouse HRP



DISTRIBUTION

Country	Distributor
 Australia	Jomar Life Research
 Austria	Biomol GmbH
 Belgium	tebu-bio
 Brazil	Sellex, Inc.
 Canada	Cedarlane
 Chile	Gene X-Press
 China	Dakewe Biotech Multiscience (Lianke) Biotech Shanghai Universal Biotech Co.
 Denmark	BioNordika Denmark A/S
 Finland	Nuppulinnan laboratoripalvelu Oy
 France	tebu-bio SAS
 Germany	Biomol GmbH Biotrend Chemikalien GmbH
 Hong Kong	Dakewe Biotech Hong Kong Lab-a-porter Ltd
 India	Biogenuix Medsystems Pvt. Ltd Biotech Desk Pvt. Ltd. Labmate (Asia) Pvt. Ltd.
 Israel	Enco Scientific Services, Ltd.
 Italy	Clinisciences tebu-bio s.r.l.

Country	Distributor
 Japan	Cosmo Bio Funakoshi
 Malaysia	Essen-Haus Sdn. Bhd.
 Morocco	HexaBiogen
 Netherlands	tebu-bio BV
 New Zealand	Jomar Life Research
 Norway	BioNordika Norway AS
 Poland	Biomol GmbH
 Portugal	Quimigen LDA tebu-bio
 Singapore	SciMed (Asia) Pte. Ltd.
 Spain	Quimigen tebu-bio
 South Africa	Biocom
 South Korea	Bio-Medical Science
 Sweden	BioNordika Sweden AB
 Switzerland	BioConcept
 Taiwan	Unimed Healthcare
 Tunisia	HexaBiogen
UK	2B Scientific Ltd Cambridge Bioscience Lorne Laboratories tebu-bio



+1 484.791.3823
P.O. Box 5199
Limerick, PA 19468, USA
sales@rockland.com
rockland.com
M19-0004-A

