

**Datasheet for R311-0100**

## Sheep Blood In Alsevers

### Overview

<b>Description:</b>	Sheep Blood in Alsevers - R311-0100
<b>Item No.:</b>	R311-0100
<b>Size:</b>	100 mL
<b>Applications:</b>	Functional Assay
<b>Origin:</b>	Sheep

### Product Details

<b>Background:</b>	These cell suspensions are useful for the titration of complement, adsorption procedures, testing for agglutinins/HA assays, and for the preparation of stroma as particulate reagents.
<b>Synonyms:</b>	Sheep Whole Blood in Alsevers, Sheep RBCs, Sheep Alsevers Red Blood Cells
<b>Species of Origin:</b>	Sheep

### Target Details

<b>Purity/Specificity:</b>	Sheep whole blood is aseptically collected and prepared to order from our colony of animals. Sheep red blood cells are perishable and are collected and processed upon receipt of your order.
----------------------------	---

### Application Details

<b>Suggested Applications:</b>	Functional Assay (Based on references)
<b>Application Note:</b>	Washed pooled cells preparations, complement titration, adsorption procedures, HA assays and for the preparation of stroma as particulate reagents.
<b>Assay Dilutions:</b>	All assays should be optimized by the user. Recommended dilutions (if any) may be listed below.

### Tissue Data

<b>Tissue Type:</b>	Blood
---------------------	-------

<b>Sex:</b>	Mixed
<b>Strain:</b>	Sheep - Mixed

## Formulation

<b>Physical State:</b>	Liquid
<b>Buffer:</b>	None
<b>Anticoagulant:</b>	Alsevers
<b>Sterility:</b>	Sterile
<b>Preservative:</b>	None
<b>Stabilizer:</b>	None

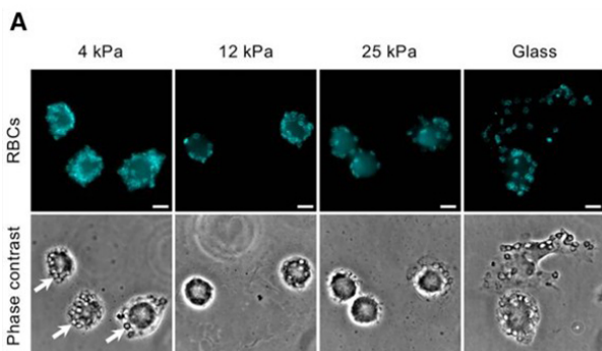
## Shipping & Handling

**Shipping Condition:** Wet Ice

**Storage Condition:** Store sheep whole blood at 4° C prior to opening. Use aseptic technique to maintain sterility when opening product. Be advised that blood is a perishable product and exact shelf life may depend on application.

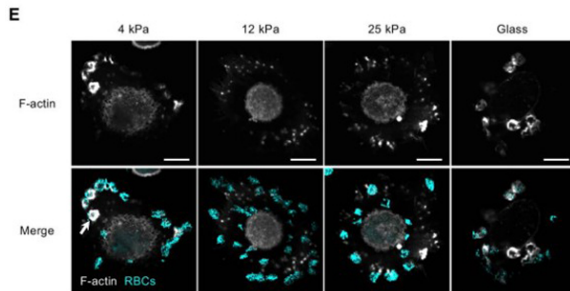
**Expiration:** This product MAY be stable for up to four (4) weeks if properly stored and handled.

## Images



### Immunofluorescence Microscopy

(A) Representative wide-field images of macrophages seeded on 4 kPa, 12 kPa, or 25 kPa hydrogels or glass and incubated with iC3b-IgM-RBCs for 15 min. Opsonized RBCs are shown in cyan in the upper panel and phase contrast images are shown in the lower panel, where phagosomes are visible (examples of phagosomes are shown by the white arrows). Scale bar, 10  $\mu$ m. Fig2. PMID: 40177633.



### Immunofluorescence Microscopy

(E) Representative confocal images of macrophages seeded on 4 kPa, 12 kPa, or 25 kPa hydrogels or glass and incubated with iC3b-IgM-RBCs for 2 min. F-actin is shown in gray while RBCs are shown in cyan (white arrow shows one example of an actin cup). Scale bar, 10  $\mu\text{m}$ .

Fig2. PMID: 40177633.

## References

- Depierre M et al. A crosstalk between adhesion and phagocytosis integrates macrophage functions into their microenvironment. *iScience*. (2025)

## Disclaimer

This product is for research use only and is not intended for therapeutic or diagnostic applications. Please contact a technical service representative for more information. All products of animal origin manufactured by Rockland Immunochemicals are derived from starting materials of North American origin. Collection was performed in United States Department of Agriculture (USDA) inspected facilities and all materials have been inspected and certified to be free of disease and suitable for exportation. All properties listed are typical characteristics and are not specifications. All suggestions and data are offered in good faith but without guarantee as conditions and methods of use of our products are beyond our control. All claims must be made within 30 days following the date of delivery. The prospective user must determine the suitability of our materials before adopting them on a commercial scale. Suggested uses of our products are not recommendations to use our products in violation of any patent or as a license under any patent of Rockland Immunochemicals, Inc. If you require a commercial license to use this material and do not have one, then return this material, unopened to: Rockland Inc., P.O. BOX 5199, Limerick, Pennsylvania, USA.