

Datasheet for Mob194-01**LMP-1 (Epstein-Barr Virus) Monoclonal Antibody****Overview**

Description:	Anti-LMP-1 (Epstein-Barr Virus) (MOUSE) Monoclonal Antibody - Mob194-01
Item No.:	Mob194-01
Size:	100 µL
Applications:	IHC
Reactivity:	Epstein-Barr Virus
Host Species:	Mouse

Product Details

Background:	Latent membrane protein 1 acts as a CD40 functional homolog to prevent apoptosis of infected B-lymphocytes and drive their proliferation. It functions as a constitutively active tumor necrosis factor receptor that induces the activation of several signaling pathways, including those of the NF-kappa-B family. LMP1 signaling leads to up-regulation of antiapoptotic proteins and provide growth signals in latently infected cells. It interacts with host UBE2I and subsequently affects the sumoylation state of several cellular proteins. For example, LMP1 induces the sumoylation of host IRF7 thereby limiting its transcriptional activity and modulating the activation of innate immune responses.
Synonyms:	Epstein-Barr Virus, EBV, Latent Membrane Protein 1, Human herpesvirus 4, HHV-4
Host Species:	Mouse
Clonality:	Monoclonal
Clone ID:	CS1, CS2, CS3, CS4
Format:	CCS

Target Details

Gene Name:	EBV
Reactivity:	Epstein-Barr Virus
Immunogen Type:	Recombinant Protein

Immunogen:	Anti-LMP-1 (Epstein-Barr Virus) antibody was produced in mice by repeated immunizations with recombinant fusion protein containing sequences of bacterial β -galactosidase and EBV encoded latent membrane protein.
Purity/Specificity:	The antibody was clarified from tissue culture supernatant. This antibody is specific to 60 kDa latent membrane protein (LMP-1) encoded by the BNLF1 gene of the EBV. Each clone reacts with different epitopes on the hydrophilic C-terminus of the cytoplasmic domain of LMP-1.

Application Details

Tested Applications:	IHC
Application Note:	Anti-LMP-1 (Epstein-Barr Virus) (MOUSE) Monoclonal Antibody was tested in IHC-P with positive control infected lymphoblastoma, Hodgkin's lymphoma tissues. Cellular Localization: Cytoplasmic. The user is advised to validate the use of the products with their tissue specimens prepared and handled in accordance with their laboratory practices. This antibody stains strongly with EBV positive lymphoblastoid cell lines and EBV infected B cell immunoblasts in infectious mononucleosis. Consult references (Kiernan, 1981; Sheehan & Hrapchak, 1980) for further details on specimen preparation.
Assay Dilutions:	All assays should be optimized by the user. Recommended dilutions (if any) may be listed below.
IHC:	1:50-1:100

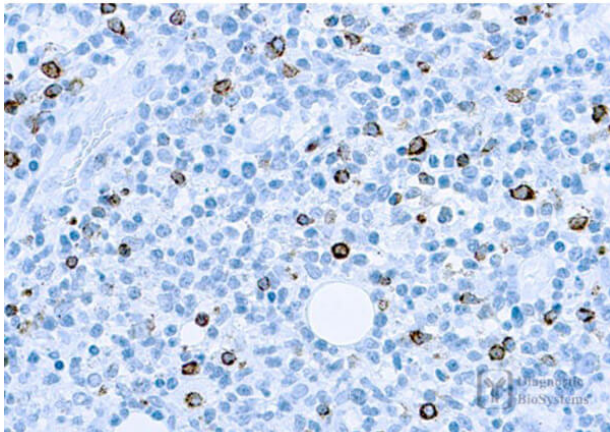
Formulation

Physical State:	Liquid
Concentration:	n/a
Buffer:	0.02 M Potassium Phosphate, 0.15 M Sodium Chloride, pH 7.2
Preservative:	0.01% (w/v) Sodium Azide

Shipping & Handling

Shipping Condition:	Wet Ice
Storage Condition:	Store at 2-8°C. This antibody is suitable for use until the expiration date when stored at 2-8°C. Do not use product after the expiration date printed on vial. If reagents are stored under conditions other than those specified here, they must be verified by the user. Diluted reagents should be used promptly. Unused portions of antibody preparation should be discarded after one day. The presence of precipitate or an unusual odor indicates that the antibody is deteriorating and should not be used.

Images



Immunohistochemistry

Immunohistochemistry of Mouse Anti-LMP-1 (Epstein-Barr Virus) Antibody. Formalin fixed paraffin embedded infected lymphoblastoma, Hodgkin's lymphoma tissue. Anti-LMP-1 at 1:50-1:100 for 30mins at RT. Pretreatment: EDTA buffer pH 8.0. (10x)

Disclaimer

This product is for research use only and is not intended for therapeutic or diagnostic applications. Please contact a technical service representative for more information. All products of animal origin manufactured by Rockland Immunochemicals are derived from starting materials of North American origin. Collection was performed in United States Department of Agriculture (USDA) inspected facilities and all materials have been inspected and certified to be free of disease and suitable for exportation. All properties listed are typical characteristics and are not specifications. All suggestions and data are offered in good faith but without guarantee as conditions and methods of use of our products are beyond our control. All claims must be made within 30 days following the date of delivery. The prospective user must determine the suitability of our materials before adopting them on a commercial scale. Suggested uses of our products are not recommendations to use our products in violation of any patent or as a license under any patent of Rockland Immunochemicals, Inc. If you require a commercial license to use this material and do not have one, then return this material, unopened to: Rockland Inc., P.O. BOX 5199, Limerick, Pennsylvania, USA.