

**Datasheet for MB-204-0500****Diamond DNA Ladder 250-10Kbp****Overview**

<b>Description:</b>	Diamond Ready-to-Use DNA Ladder 250-10Kbp - MB-204-0500
<b>Item No.:</b>	MB-204-0500
<b>Size:</b>	500 µL
<b>Applications:</b>	SDS-PAGE, Other

**Product Details**

<b>Background:</b>	Diamond Ready-to-Use DNA Ladder 250-10Kbp is a unique combination of a number of proprietary plasmids digested with appropriate restriction enzymes and PCR products to yield 13 fragments, suitable for use as molecular weight standards for agarose gel electrophoresis. The DNA includes fragments ranging from 250-10,000 base pairs. The 1K and 3K bands have increased intensity to serve as reference points. The approximate mass of DNA in each band is provided (0.5 µg a load) for approximating the mass of DNA in comparably intense samples of similar size.
<b>Synonyms:</b>	DNA ladder, DNA marker, DNA standard, Molecular weight marker, DNA molecular weight ladder, Ready-to-use DNA ladder, DNA agarose ladder
<b>Reagent Type:</b>	MW Standards

**Target Details**

<b>Purity/Specificity:</b>	Diamond Ready-to-Use DNA Ladder 250-10Kbp is comprised of PCR products and double-stranded DNA that were digested with appropriate restriction enzymes, are phenol extracted, and equilibrated to 10 mM Tris-HCl (pH 8.0) and 10mM EDTA.
----------------------------	--

**Application Details**

<b>Tested Applications:</b>	SDS-PAGE
<b>Suggested Applications:</b>	Other (Based on references)
<b>Application Note:</b>	Diamond Ready-to-Use DNA Ladder 250-10Kbp has a suggested load volume is 5 µL/well.

**Assay Dilutions:** All assays should be optimized by the user. Recommended dilutions (if any) may be listed below.

## Formulation

**Physical State:** Liquid (in 1x Loading Buffer)

**Concentration:** 100 µg/mL Sufficient to run approximately 100 tests

**Buffer:** See application note.

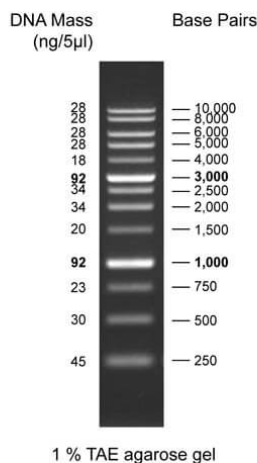
## Shipping & Handling

**Shipping Condition:** Wet Ice

**Storage Condition:** Store vial at 2°-8° C. Can be stored at room temperature for up to three (3) months or at -20° C for up to one (1) year.

**Expiration:** Expiration date is six (6) months from date of receipt.

## Images



### SDS-PAGE

Diamond Ready-to-Use DNA Ladder 250-10Kbp shows this typical migration pattern when loaded at 5 µL per well on a 1.0% TAE agarose gel.

## References

- Dominguez-Ortiz J et al. A Molecular Characterization of the Allelic Expression of the BRCA1 Founder Δ9-12 Pathogenic Variant and Its Potential Clinical Relevance in Hereditary Cancer. *Int J Mol Sci.* (2024)

## Disclaimer

This product is for research use only and is not intended for therapeutic or diagnostic applications. Please contact a technical service representative for more information. All products of animal origin manufactured by Rockland Immunochemicals are derived from starting materials of North American origin. Collection was performed in United States Department of Agriculture (USDA) inspected facilities and all materials have been inspected and certified to be free of disease and suitable for exportation. All properties listed are typical characteristics and are not specifications. All suggestions and data are offered in good faith but without guarantee as conditions and methods of use of our products are beyond our control. All claims must be made within 30 days following the date of delivery. The prospective user must determine the suitability of our materials before adopting them on a commercial scale. Suggested uses of our products are not recommendations to use our products in violation of any patent or as a license under any patent of Rockland Immunochemicals, Inc. If you require a commercial license to use this material and do not have one, then return this material, unopened to: Rockland Inc., P.O. BOX 5199, Limerick, Pennsylvania, USA.