

Datasheet for MB-203-0500

Diamond DNA Ladder 100-3000bp**Overview**

Description:	Diamond Ready-to-Use DNA Ladder 100-3000bp - MB-203-0500
Item No.:	MB-203-0500
Size:	500 µL
Applications:	SDS-PAGE

Product Details

Background:	Diamond Ready-to-Use DNA Ladder 100-3000bp is a unique combination of PCR products and a number of proprietary plasmids digested with appropriate restriction enzymes to yield 12 fragments, suitable for use as molecular weight standards for agarose gel electrophoresis. The DNA includes fragments ranging from 100-3,000 base pairs. The 500 and 1,500 base pair bands have increased intensity to serve as reference points. The approximate mass of DNA in each band is provided (0.54 µg a load) for approximating the mass of DNA in comparably intense samples of similar size.
Synonyms:	DNA ladder, DNA marker, DNA standard, Molecular weight marker, DNA molecular weight ladder, Ready-to-use DNA ladder, DNA agarose ladder
Reagent Type:	MW Standards

Target Details

Purity/Specificity:	Diamond Ready-to-Use DNA Ladder 100-3000bp is comprised of PCR products and double-stranded DNA that were digested with appropriate restriction enzymes, are phenol extracted, and equilibrated to 10 mM Tris-HCl (pH 8.0) and 10mM EDTA.
Relevant Links:	<ul style="list-style-type: none">MB-203-0500 SDS

Application Details

Tested Applications:	SDS-PAGE
Application Note:	Diamond Ready-to-Use DNA Ladder 100-3000bp has a suggested load volume is 5 µL/well.

Assay Dilutions: All assays should be optimized by the user. Recommended dilutions (if any) may be listed below.

Other: DOE: 12/2023

Formulation

Physical State: Liquid (in 1x Loading Buffer)

Concentration: 108 µg/mL Sufficient to run approximately 100 tests

Buffer: See application note.

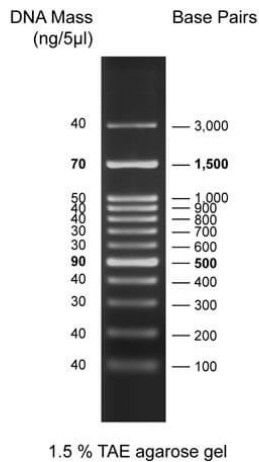
Shipping & Handling

Shipping Condition: Wet Ice

Storage Condition: Store vial at 2°-8° C. Can be stored at room temperature for up to six (6) months or at -20° C for up to two (2) years.

Expiration: Expiration date is one (1) year from date of receipt.

Images



SDS-PAGE

Diamond Ready-to-Use DNA Ladder 100-3000bp shows this typical migration pattern when loaded at 5 µL per well on a 1.5% TAE agarose gel.

Disclaimer

This product is for research use only and is not intended for therapeutic or diagnostic applications. Please contact a technical service representative for more information. All products of animal origin manufactured by Rockland Immunochemicals are derived from starting materials of North American origin. Collection was performed in United States Department of Agriculture (USDA) inspected facilities and all materials have been inspected and certified to be free of disease and suitable for exportation. All properties listed are typical characteristics and are not specifications. All suggestions and data are offered in good faith but without guarantee as conditions and methods of use of our products are beyond our control. All claims must be made within 30 days following the date of delivery. The prospective user must determine the suitability of our materials before adopting them on a commercial scale. Suggested uses of our products are not recommendations to use our products in violation of any patent or as a license under any patent of Rockland Immunochemicals, Inc. If you require a commercial license to use this material and do not have one, then return this material, unopened to: Rockland Inc., P.O. BOX 5199, Limerick, Pennsylvania, USA.