

## Datasheet for MB-087-0100

**ProXtract B™ Extraction Buffer****Overview**

<b>Description:</b>	ProXtract B™ Extraction Buffer - MB-087-0100
<b>Item No.:</b>	MB-087-0100
<b>Size:</b>	100 mL

**Product Details**

<b>Background:</b>	ProXtract B™ is ready-to-use as a working 1X solution and requires no further dilution. This buffer can be stored and used at room temperature. ProXtract B™ Extraction Buffer is gentle and has a high efficiency of protein recovery. It is compatible with chelating agents, reducing agents, protease inhibitors, cocktail inhibitors and chaotropic salts. There is no interference with downstream purification processes. Other applications may require detergents or other additional components.
<b>Synonyms:</b>	ProXtract B™ Extraction Buffer, Protein Extraction Buffer, Bacterial Protein Extraction Reagent, Bacterial cell lysis buffer

**Target Details**

<b>Purity/Specificity:</b>	ProXtract B Extraction Buffer was aseptically filtered through a Millipore 0.22 micron filter into clean, pre-sterilized containers. The product was tested on trypticase soy agar for 24 hours, 48 hours and 72 hours and was found to be negative for bacteria.
<b>Relevant Links:</b>	<ul style="list-style-type: none"><li><a href="#">ProXtract B Extraction Buffer Protocol</a></li></ul>

**Application Details**

<b>Application Note:</b>	ProXtract B™ Buffer is suitable for protein extraction and easily scalable. Specific conditions should be optimized by the end user. See protocol.
<b>Assay Dilutions:</b>	All assays should be optimized by the user. Recommended dilutions (if any) may be listed below.
<b>WB:</b>	2-5µL
<b>Other:</b>	20-30 mL per gram of wet cells

## Formulation

<b>Physical State:</b>	Liquid (sterile filtered)
<b>Concentration:</b>	1X
<b>Preservative:</b>	0.05% (w/v) Sodium Azide
<b>Stabilizer:</b>	None

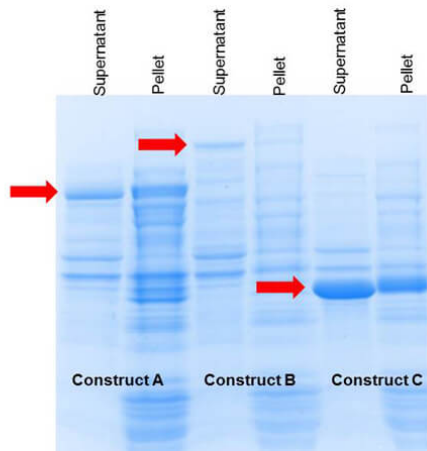
## Shipping & Handling

<b>Shipping Condition:</b>	Ambient
<b>Storage Condition:</b>	Store container at room temperature (18° to 26° C) prior to opening. If desired, the solution may be stored at 4° C or less. Some salts may precipitate out of solution at lower temperature. Allow buffer to equilibrate to room temperature (18° to 26° C) to restore solubility of some salts.
<b>Expiration:</b>	Expiration date is six (6) months from date of receipt.

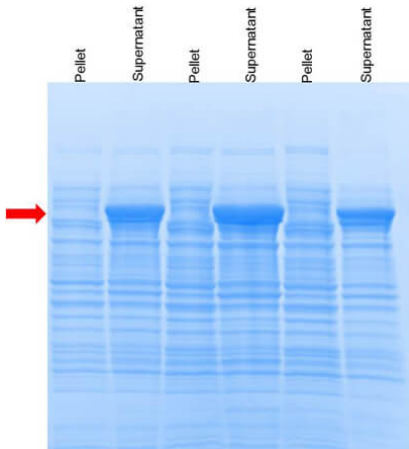
## Images



**Bottle**  
ProXtract B™ Extraction Buffer


**SDS-PAGE**

SDS-PAGE of Construct A, B and C plasmids transformed in E.Coli BL21 strains. After overexpression, cells were pelleted by centrifugation at 5000 rpm for 10 mins. Protein extraction was performed with ProXtract buffer for 20 mins at RT. Centrifugation is then done at 12000 rpm for 20 minutes at 4°C. Lane 1: Supernatant of Construct A. Lane 2: Pellet from Construct A. Lane 3: Supernatant of Construct B. Lane 4: Pellet from Construct B. Lane 5: Supernatant of Construct C. Lane 6: Pellet from Construct C.


**SDS-PAGE**

SDS-PAGE of recombinant protein D/ pGEX-2T plasmid transformed in Rosetta strain. Cells were plated on LB Cam-Amp, grown, and induced with IPTG. Cells were pelleted by centrifugation at 5000 rpm for 10 mins. Protein extraction was performed with ProXtract buffer for 20 mins at RT. Centrifugation is then done at 12000 rpm for 20 minutes at 4°C. Lane 1: Pellet from 1h. Lane 2: Supernatant of 1h. Lane 3: Pellet from 2h. Lane 4: Supernatant of 2h. Lane 5: Pellet from 3h. Lane 6: Supernatant of 3h.

**Disclaimer**

This product is for research use only and is not intended for therapeutic or diagnostic applications. Please contact a technical service representative for more information. All products of animal origin manufactured by Rockland Immunochemicals are derived from starting materials of North American origin. Collection was performed in United States Department of Agriculture (USDA) inspected facilities and all materials have been inspected and certified to be free of disease and suitable for exportation. All properties listed are typical characteristics and are not specifications. All suggestions and data are offered in good faith but without guarantee as conditions and methods of use of our products are beyond our control. All claims must be made within 30 days following the date of delivery. The prospective user must determine the suitability of our materials before adopting them on a commercial scale. Suggested uses of our products are not recommendations to use our products in violation of any patent or as a license under any patent of Rockland Immunochemicals, Inc. If you require a commercial license to use this material and do not have one, then return this material, unopened to: Rockland Inc., P.O. BOX 5199, Limerick, Pennsylvania, USA.