

Datasheet for KOA0867

Rat E-Cadherin ELISA Kit**Overview**

Description:	Rat E-Cadherin AccuSignal ELISA Kit - KOA0867
Item No.:	KOA0867
Size:	1 Kit
Applications:	ELISA
Reactivity:	Rat
Range:	156 pg/ml - 10000 pg/ml

Product Details

Background:	Cadherin-1, also known as CAM 120/80 or epithelial cadherin (E-cadherin) or uvomorulin, is a protein that in humans is encoded by the CDH1 gene. E-cadherin is a Ca ²⁺ -dependent epithelial cell-cell adhesion molecule. Downregulation of E-cadherin expression often correlates with strong invasive potential and poor prognosis of human carcinomas. The gene spans a region of approximately 100 kb, and its location on chromosome 16q22.1. It contains 16 exons and a 65-kb-long intron 2. E-cadherin gene mutations may contribute to the development of diffusely growing gastric carcinomas. It plays a central part in the process of epithelial morphogenesis and acts as a strong invasion suppressor in experimental tumor cell systems. The standard product used in this kit is recombinant gene expression with the molecular mass of 120KDa.
Synonyms:	Arc 1, Cadherin 1, cadherin 1 type 1 E-cadherin, Cadherin1, CAM 120/80, CD 234, CD324, CD324 antigen, CDH1, CDHE, ECAD, Epithelial cadherin, epithelial calcium dependant adhesion protein, LCAM, Liver cell adhesion molecule, UVO, Uvomorulin
Detection Kit Type:	ELISA Kit
Detection Range:	156 pg/ml - 10000 pg/ml
Sensitivity:	<15 pg/ml

Target Details

Gene Name:	CDH1
Reactivity:	Rat

Immunogen:	Expression system for standard: NSO; Immunogen sequence: Q24-S704
Purity/Specificity:	Natural and recombinant rat E-Cadherin. There is no detectable cross-reactivity with other relevant proteins.
Relevant Links:	<ul style="list-style-type: none">• UniProtKB - Q9R0T4• NCBI - NP_112624.1• GenID - 83502• KOA0867 Protocol

Application Details

Tested Applications:	ELISA
Application Note:	Useful in Sandwich ELISA for Quantitative Detection of Antigen. Aliquot 0.1ml per well of the 10000pg/ml, 5000pg/ml, 2500pg/ml, 1250pg/ml, 625pg/ml, 312pg/ml, 156pg/ml rat E-Cadherin standard solutions into the precoated 96-well plate. Add 0.1ml of the sample diluent buffer into the control well (Zero well). Add 0.1ml of each properly diluted sample of rat cell culture supernates, serum or plasma(heparin) to each empty well. It is recommended that each rat E-Cadherin standard solution and each sample be measured in duplicate.
Assay Dilutions:	All assays should be optimized by the user. Recommended dilutions (if any) may be listed below.

Formulation

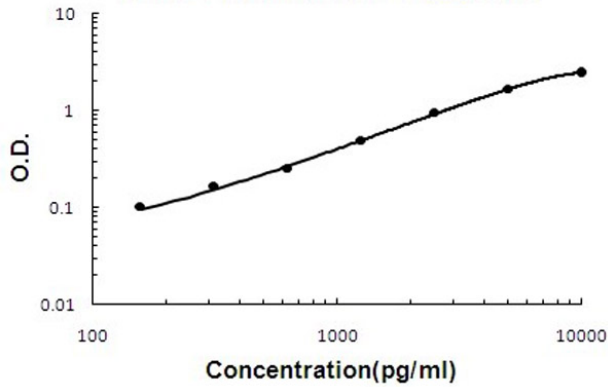
Anticoagulant:	Heparin Sodium
-----------------------	----------------

Shipping & Handling

Shipping Condition:	Wet Ice
Storage Condition:	Store vials at 4°C prior to opening. Centrifuge product if not completely clear after standing at room temperature. This product is stable for 6 months at 4°C as an undiluted liquid. Dilute only prior to immediate use. For extended storage freeze at -20°C or below for 12 months. Avoid cycles of freezing and thawing.
Expiration:	See kit insert for complete instructions.

Images

Rat E-Cadherin ELISA Kit



ELISA

Rat E-Cadherin ELISA Kit standard curve.

Disclaimer

This product is for research use only and is not intended for therapeutic or diagnostic applications. Please contact a technical service representative for more information. All products of animal origin manufactured by Rockland Immunochemicals are derived from starting materials of North American origin. Collection was performed in United States Department of Agriculture (USDA) inspected facilities and all materials have been inspected and certified to be free of disease and suitable for exportation. All properties listed are typical characteristics and are not specifications. All suggestions and data are offered in good faith but without guarantee as conditions and methods of use of our products are beyond our control. All claims must be made within 30 days following the date of delivery. The prospective user must determine the suitability of our materials before adopting them on a commercial scale. Suggested uses of our products are not recommendations to use our products in violation of any patent or as a license under any patent of Rockland Immunochemicals, Inc. If you require a commercial license to use this material and do not have one, then return this material, unopened to: Rockland Inc., P.O. BOX 5199, Limerick, Pennsylvania, USA.