

Datasheet for KOA0845

Mouse Chordin ELISA Kit**Overview**

Description:	Mouse Chordin AccuSignal ELISA Kit - KOA0845
Item No.:	KOA0845
Size:	1 Kit
Applications:	ELISA
Reactivity:	Mouse
Range:	62.5 pg/ml - 4000 pg/ml

Product Details

Background:	Chordin is a key developmental protein that dorsalizes early vertebrate embryonic tissues by binding to ventralizing TGF-beta-like bone morphogenetic proteins (BMPs) and sequestering them in latent complexes. In mice, Chordin is expressed in the node but not in the anterior visceral endoderm. It has been found to be required for forebrain development. In developing mice that are deficient in both chordin and noggin, the head is nearly absent. This is significant because when only noggin is deficient there are mild defects but the head still forms. Chordin is also involved in avian gastrulation. It is expressed in the anterior cells of Koller's sickle, which form the anterior cells of the primitive streak, a key structure through which gastrulation occurs.
Synonyms:	Chordin, Chrd, CHRД_HUMAN, MGC133038, Shortgastrulation protein, SOG
Detection Kit Type:	ELISA Kit
Detection Range:	62.5 pg/ml - 4000 pg/ml
Sensitivity:	<10 pg/ml

Target Details

Gene Name:	CHRD
Reactivity:	Mouse
Immunogen:	Expression system for standard: NSO; Immunogen sequence: T27-S948
Purity/Specificity:	Natural and recombinant mouse Chordin. There is no detectable cross-reactivity with other relevant proteins.

Relevant Links:	<ul style="list-style-type: none">• UniProtKB - Q9Z0E2• NCBI - NP_001264970.1• GeneID - 12667• KOA0845 Protocol
------------------------	--

Application Details

Tested Applications:	ELISA
Application Note:	Useful in Sandwich ELISA for Quantitative Detection of Antigen. Aliquot 0.1ml per well of the 4000pg/ml, 2000pg/ml, 1000pg/ml, 500pg/ml, 250pg/ml, 125pg/ml, 62.5pg/ml mouse Chordin standard solutions into the precoated 96-well plate. Add 0.1ml of the sample diluent buffer into the control well (Zero well). Add 0.1ml of each properly diluted sample of mouse cell culture supernates, serum or plasma(heparin, EDTA) to each empty well. We recommend that each mouse Chordin standard solution and each sample is measured in duplicate.
Assay Dilutions:	All assays should be optimized by the user. Recommended dilutions (if any) may be listed below.

Formulation

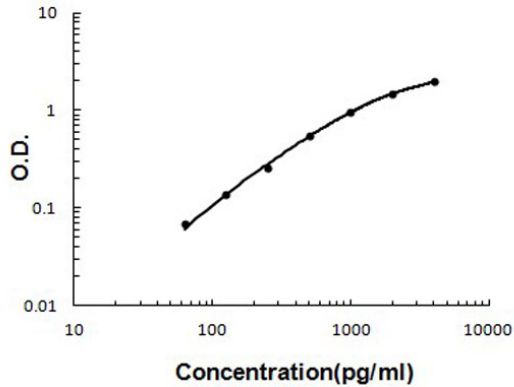
Anticoagulant:	Heparin Sodium
-----------------------	----------------

Shipping & Handling

Shipping Condition:	Wet Ice
Storage Condition:	Store vials at 4°C prior to opening. Centrifuge product if not completely clear after standing at room temperature. This product is stable for 6 months at 4°C as an undiluted liquid. Dilute only prior to immediate use. For extended storage freeze at -20°C or below for 12 months. Avoid cycles of freezing and thawing.
Expiration:	See kit insert for complete instructions.

Images

Mouse Chordin ELISA Kit



ELISA

Mouse Chordin ELISA Kit standard curve.

Disclaimer

This product is for research use only and is not intended for therapeutic or diagnostic applications. Please contact a technical service representative for more information. All products of animal origin manufactured by Rockland Immunochemicals are derived from starting materials of North American origin. Collection was performed in United States Department of Agriculture (USDA) inspected facilities and all materials have been inspected and certified to be free of disease and suitable for exportation. All properties listed are typical characteristics and are not specifications. All suggestions and data are offered in good faith but without guarantee as conditions and methods of use of our products are beyond our control. All claims must be made within 30 days following the date of delivery. The prospective user must determine the suitability of our materials before adopting them on a commercial scale. Suggested uses of our products are not recommendations to use our products in violation of any patent or as a license under any patent of Rockland Immunochemicals, Inc. If you require a commercial license to use this material and do not have one, then return this material, unopened to: Rockland Inc., P.O. BOX 5199, Limerick, Pennsylvania, USA.