

Datasheet for KOA0833**Human ANGPTL3 ELISA Kit****Overview**

Description:	Human ANGPTL3 AccuSignal ELISA Kit - KOA0833
Item No.:	KOA0833
Size:	1 Kit
Applications:	ELISA
Reactivity:	Human
Range:	312 pg/ml - 20,000 pg/ml

Product Details

Background:	ANGPTL3, also known as Angiotensin-like 3 or HYPLI, is a protein that in humans is encoded by the ANGPTL3 gene. It is mapped to 1p31.3. The protein encoded by this gene is a member of the angiotensin-like family of secreted factors. It is expressed predominantly in the liver, and has the characteristic structure of angiotensins, consisting of a signal peptide, N-terminal coiled-coil domain, and the C-terminal fibrinogen (FBN)-like domain. ANGPTL3 also acts as dual inhibitor of lipoprotein lipase (LPL) and endothelial lipase (EL), and increases plasma triglyceride and HDL cholesterol in rodents. It can inhibit endothelial lipase to catalyze HDL-phospholipid and increase HDL-PL levels.
Synonyms:	ANG 5, ANG-5, ANG5, Angiotensin 5, Angiotensin like 3, Angiotensin related protein 3, Angiotensin-5, Angiotensin-like protein 3, Angiotensin-related protein 3, ANGL3_HUMAN, ANGPT5, ANGPTL3, ANL3, FHBL2, OTTHUMP00000010719, UNQ153/PRO179
Detection Kit Type:	ELISA Kit
Detection Range:	312 pg/ml - 20,000 pg/ml
Sensitivity:	<10 pg/ml

Target Details

Gene Name:	ANGPTL3
Reactivity:	Human
Immunogen:	Expression system for standard: sf21; Immunogen sequence: S17-E460

Purity/Specificity: Natural and recombinant human ANGPTL3. There is no detectable cross-reactivity with other relevant proteins.

Relevant Links:

- [UniProtKB - Q9Y5C1](#)
- [NCBI - NP_055310.1](#)
- [GeneID - 27329](#)
- [KOA0833 Protocol](#)

Application Details

Tested Applications: ELISA

Application Note: Useful in Sandwich ELISA for Quantitative Detection of Antigen. Aliquot 0.1ml per well of the 20,000pg/ml, 10,000pg/ml, 5000pg/ml, 2500pg/ml, 1250pg/ml, 625pg/ml, 312pg/ml human ANGPTL3 standard solutions into the precoated 96-well plate. Add 0.1ml of the sample diluent buffer into the control well (Zero well). Add 0.1ml of each properly diluted sample of human cell culture supernates, serum or plasma (heparin, EDTA) to each empty well. It is recommended that each human ANGPTL3 standard solution and each sample be measured in duplicate.

Assay Dilutions: All assays should be optimized by the user. Recommended dilutions (if any) may be listed below.

Other: Detection Range 312 pg/ml - 20,000 pg/ml
DOE: @4° 03/19/2024
@-20°C 09/17/2024

Formulation

Concentration: 1 Kit

Anticoagulant: Heparin Sodium

Shipping & Handling

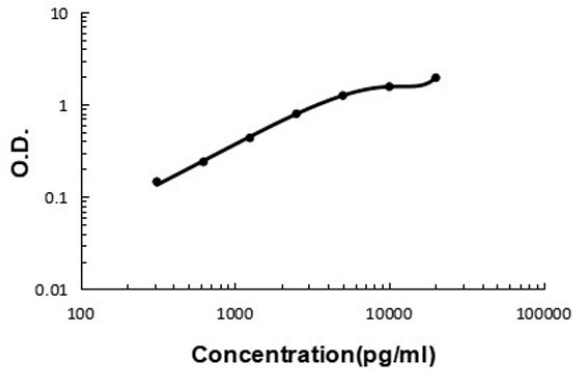
Shipping Condition: Wet Ice

Storage Condition: Store vials at 4°C prior to opening. Centrifuge product if not completely clear after standing at room temperature. This product is stable for 6 months at 4°C as an undiluted liquid. Dilute only prior to immediate use. For extended storage freeze at -20°C or below for 12 months. Avoid cycles of freezing and thawing.

Expiration: See kit insert for complete instructions.

Images

Human ANGPTL3 ELISA Kit



ELISA

Human ANGPTL3 ELISA Kit standard curve.

Disclaimer

This product is for research use only and is not intended for therapeutic or diagnostic applications. Please contact a technical service representative for more information. All products of animal origin manufactured by Rockland Immunochemicals are derived from starting materials of North American origin. Collection was performed in United States Department of Agriculture (USDA) inspected facilities and all materials have been inspected and certified to be free of disease and suitable for exportation. All properties listed are typical characteristics and are not specifications. All suggestions and data are offered in good faith but without guarantee as conditions and methods of use of our products are beyond our control. All claims must be made within 30 days following the date of delivery. The prospective user must determine the suitability of our materials before adopting them on a commercial scale. Suggested uses of our products are not recommendations to use our products in violation of any patent or as a license under any patent of Rockland Immunochemicals, Inc. If you require a commercial license to use this material and do not have one, then return this material, unopened to: Rockland Inc., P.O. BOX 5199, Limerick, Pennsylvania, USA.