

Datasheet for KOA0819

Human Syndecan-4 - SDC4 ELISA Kit**Overview**

Description:	Human Syndecan-4/SDC4 AccuSignal ELISA Kit - KOA0819
Item No.:	KOA0819
Size:	1 Kit
Applications:	ELISA
Reactivity:	Human
Range:	62.5 pg/ml - 4000 pg/ml

Product Details

Background:	Syndecan-4 (SDC4) is a protein that in humans is encoded by the SDC4 gene. The protein is found as a homodimer and is a member of the syndecan proteoglycan family. It is mapped to 20q13.12. Syndecan-4 is one of the four vertebrate syndecans and has a molecular weight of ~20 kDa. It is a transmembrane (type I) heparan sulfate proteoglycan that functions as a receptor in intracellular signaling. Syndecan-4 also regulates the actin cytoskeleton, cell adhesion, and cell migration. In addition, Syndecan-4 can activate protein kinase C (PKC). The variable domain of syndecan-4 could be a site of self-association. What's more, Syndecan-4 also binds to phosphatidylinositol (4,5)-bisphosphate (PIP2) through the variable domain and increases PKC activity ten-fold.
Synonyms:	Amphiglycan, MGC22217, OTTHUMP00000031788, ryudocan amphiglycan, Ryudocan, Ryudocan core protein, SDC 4, SDC4, SDC4_HUMAN, SYND 4, SYND4, syndecan 4, syndecan 4 (amphiglycan, ryudocan), syndecan proteoglycan 4, Syndecan-4, Syndecan4
Detection Kit Type:	ELISA Kit
Detection Range:	62.5 pg/ml - 4000 pg/ml
Sensitivity:	<10 pg/ml

Target Details

Gene Name:	SDC4
Reactivity:	Human
Immunogen:	Expression system for standard: NSO; Immunogen sequence: E19-E145

Purity/Specificity: Natural and recombinant human Syndecan-4. There is no detectable cross-reactivity with other relevant proteins.

Relevant Links:

- [UniProtKB - P31431](#)
- [NCBI - NP_002990.2](#)
- [GeneID - 6385](#)
- [KOA0819 Protocol](#)

Application Details

Tested Applications: ELISA

Application Note: Useful in Sandwich ELISA for Quantitative Detection of Antigen. Aliquot 0.1ml per well of the 4000pg/ml, 2000pg/ml, 1000pg/ml, 500pg/ml, 250pg/ml, 125pg/ml, 62.5pg/ml human Syndecan-4 standard solutions into the precoated 96-well plate. Add 0.1ml of the sample diluent buffer into the control well (Zero well). Add 0.1ml of each properly diluted sample of human cell culture supernates or serum to each empty well. It is recommended that each human Syndecan-4 standard solution and each sample be measured in duplicate.

Assay Dilutions: All assays should be optimized by the user. Recommended dilutions (if any) may be listed below.

Formulation

Shipping & Handling

Shipping Condition: Wet Ice

Storage Condition: Store vials at 4°C prior to opening. Centrifuge product if not completely clear after standing at room temperature. This product is stable for 6 months at 4°C as an undiluted liquid. Dilute only prior to immediate use. For extended storage freeze at -20°C or below for 12 months. Avoid cycles of freezing and thawing.

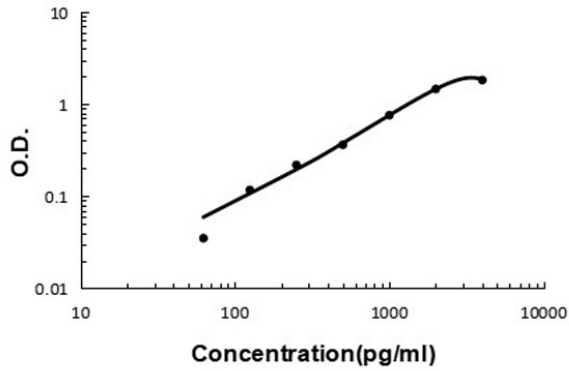
Expiration: See kit insert for complete instructions.

Images

Human SDC4 ELISA Kit

ELISA

Human Syndecan-4/SDC4 ELISA Kit standard curve.



Disclaimer

This product is for research use only and is not intended for therapeutic or diagnostic applications. Please contact a technical service representative for more information. All products of animal origin manufactured by Rockland Immunochemicals are derived from starting materials of North American origin. Collection was performed in United States Department of Agriculture (USDA) inspected facilities and all materials have been inspected and certified to be free of disease and suitable for exportation. All properties listed are typical characteristics and are not specifications. All suggestions and data are offered in good faith but without guarantee as conditions and methods of use of our products are beyond our control. All claims must be made within 30 days following the date of delivery. The prospective user must determine the suitability of our materials before adopting them on a commercial scale. Suggested uses of our products are not recommendations to use our products in violation of any patent or as a license under any patent of Rockland Immunochemicals, Inc. If you require a commercial license to use this material and do not have one, then return this material, unopened to: Rockland Inc., P.O. BOX 5199, Limerick, Pennsylvania, USA.