

Datasheet for KOA0812**Human Livin ELISA Kit****Overview**

Description:	Human Livin AccuSignal ELISA Kit - KOA0812
Item No.:	KOA0812
Size:	1 Kit
Applications:	ELISA
Reactivity:	Human
Range:	156 pg/ml - 10,000 pg/ml

Product Details

Background:	BIRC7, also called KIAP or Livin, is a protein that in humans is encoded by the BIRC7 gene. This gene is mapped to 20q13.33. It encodes a member of the inhibitor of apoptosis protein (IAP) family, and contains a single copy of a baculovirus IAP repeat (BIR) as well as a RING-type zinc finger domain. The BIR domain is essential for inhibitory activity and interacts with caspases, while the RING finger domain sometimes enhances antiapoptotic activity but does not inhibit apoptosis alone. Elevated levels of the encoded protein may be associated with cancer progression and play a role in chemotherapy sensitivity. BIRC7 blocked apoptosis induced by BAX induction of cytochrome C release from mitochondria, and it also can block apoptosis induced by chemotherapeutic agents.
Synonyms:	Baculoviral IAP repeat containing 7, Baculoviral IAP repeat containing protein 7, Baculoviral IAP repeat-containing protein 7, BIRC 7, BIRC7, BIRC7_HUMAN, KIAP, Kidney inhibitor of apoptosis protein, LIVIN, Livin inhibitor of apoptosis, Melanoma inhibitor of apoptosis protein, ML IAP, ML-IAP, MLIAP, RING finger protein 50, RNF 50, RNF50
Detection Kit Type:	ELISA Kit
Detection Range:	156 pg/ml - 10,000 pg/ml
Sensitivity:	<20 pg/ml

Target Details

Gene Name:	BIRC7
Reactivity:	Human

Immunogen:	Expression system for standard: E.coli; Immunogen sequence: M1-S298
Purity/Specificity:	Natural and recombinant human Livin. There is no detectable cross-reactivity with other relevant proteins.
Relevant Links:	<ul style="list-style-type: none">• UniProtKB - Q96CA5• NCBI - NP_071444.1• GenelD - 79444• KOA0812 Protocol

Application Details

Tested Applications:	ELISA
Application Note:	Useful in Sandwich ELISA for Quantitative Detection of Antigen. Aliquot 0.1ml per well of the 50ng/ml, 25ng/ml, 12.5ng/ml, 6.25ng/ml, 3.12ng/ml, 1.56ng/ml, 0.78ng/ml human Livin standard solutions into the precoated 96-well plate. Add 0.1ml of the sample diluent buffer into the control well (Zero well). Add 0.1ml of each properly diluted sample of human cell culture supernates, serum, cell lysates or tissue homogenates to each empty well. It is recommended that each human Livin standard solution and each sample be measured in duplicate.
Assay Dilutions:	All assays should be optimized by the user. Recommended dilutions (if any) may be listed below.

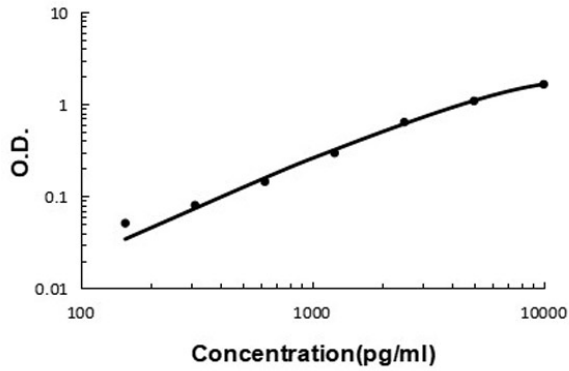
Formulation

Shipping & Handling

Shipping Condition:	Wet Ice
Storage Condition:	Store vials at 4°C prior to opening. Centrifuge product if not completely clear after standing at room temperature. This product is stable for 6 months at 4°C as an undiluted liquid. Dilute only prior to immediate use. For extended storage freeze at -20°C or below for 12 months. Avoid cycles of freezing and thawing.
Expiration:	See kit insert for complete instructions.

Images

Human Livin ELISA Kit



ELISA

Human Livin ELISA Kit standard curve.

Disclaimer

This product is for research use only and is not intended for therapeutic or diagnostic applications. Please contact a technical service representative for more information. All products of animal origin manufactured by Rockland Immunochemicals are derived from starting materials of North American origin. Collection was performed in United States Department of Agriculture (USDA) inspected facilities and all materials have been inspected and certified to be free of disease and suitable for exportation. All properties listed are typical characteristics and are not specifications. All suggestions and data are offered in good faith but without guarantee as conditions and methods of use of our products are beyond our control. All claims must be made within 30 days following the date of delivery. The prospective user must determine the suitability of our materials before adopting them on a commercial scale. Suggested uses of our products are not recommendations to use our products in violation of any patent or as a license under any patent of Rockland Immunochemicals, Inc. If you require a commercial license to use this material and do not have one, then return this material, unopened to: Rockland Inc., P.O. BOX 5199, Limerick, Pennsylvania, USA.