

Datasheet for KOA0809

Mouse Neuropilin-2 ELISA Kit**Overview**

Description:	Mouse Neuropilin-2 AccuSignal ELISA Kit - KOA0809
Item No.:	KOA0809
Size:	1 Kit
Applications:	ELISA
Reactivity:	Mouse
Range:	156 pg/ml - 10,000 pg/ml

Product Details

Background:	NRP2(Neuropilin-2), also called Npn2 or VEGF165R2, encodes a member of the neuropilin family of receptor proteins. The soluble NRP2 was secreted as a 62.5-kD protein following transfection in Chinese hamster ovary cells. The NRP2 gene is mapped to 2q33.3. The NRP2 gene contains 17 exons and spans about 112 kb. This protein may play a role in cardiovascular development, axon guidance, and tumorigenesis. Mice with null mutations in genes encoding Sema3F, and its holoreceptor components Npn2 and plexin A3 (PLEXA3), exhibit increased dentate gyrus granule cell and cortical layer V pyramidal neuron spine number and size, and also aberrant spine distribution. Moreover, Sema3F promotes loss of spines and excitatory synapses in dissociated neurons in vitro, and in NRP2-null brain slices cortical layer V and dentate gyrus granule cells exhibit increased miniature excitatory postsynaptic current frequency. These disparate effects of secreted semaphorins are reflected in the restricted dendritic localization of NRP2 to apical dendrites and of Npn1 to all dendrites of cortical pyramidal neurons.
Synonyms:	MGC126574, Neuropilin 2, Neuropilin-2, Neuropilin2, NP 2, NP2, NPN 2, NPN2, NRP 2, Nrp2, NRP2_HUMAN, PRO2714, Receptor for VEGF165 and semaphorins class3, Vascular endothelial cell growth factor 165 receptor 2, Vascular endothelial growth factor 165 receptor 2, VEGF1265R2, VEGF165R2
Detection Kit Type:	ELISA Kit
Detection Range:	156 pg/ml - 10,000 pg/ml
Sensitivity:	<10 pg/ml

Target Details**Gene Name:** NRP2

Reactivity:	Mouse
Immunogen:	Expression system for standard: NSO; Immunogen sequence: Q23-D863
Purity/Specificity:	Natural and recombinant mouse Neuropilin-2. There is no detectable cross-reactivity with other relevant proteins.
Relevant Links:	<ul style="list-style-type: none">• UniProtKB - O35375• NCBI - NP_001070871.1• GeneID - 18187• KOA0809 Protocol

Application Details

Tested Applications:	ELISA
Application Note:	Useful in Sandwich ELISA for Quantitative Detection of Antigen. Aliquot 0.1ml per well of the 10,000pg/ml, 5000pg/ml, 2500pg/ml, 1250pg/ml, 625pg/ml, 312pg/ml, 156pg/ml mouse Neuropilin-2 standard solutions into the precoated 96-well plate. Add 0.1ml of the sample diluent buffer into the control well (Zero well). Add 0.1ml of each properly diluted sample of mouse cell culture supernates, cell lysates or tissue homogenates to each empty well. It is recommended that each mouse Neuropilin-2 standard solution and each sample be measured in duplicate.
Assay Dilutions:	All assays should be optimized by the user. Recommended dilutions (if any) may be listed below.

Formulation

Shipping & Handling

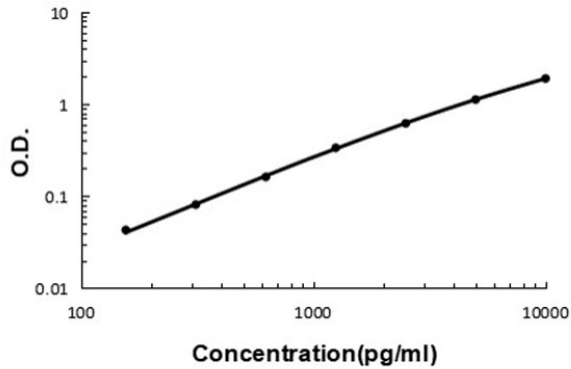
Shipping Condition:	Wet Ice
Storage Condition:	Store vials at 4°C prior to opening. Centrifuge product if not completely clear after standing at room temperature. This product is stable for 6 months at 4°C as an undiluted liquid. Dilute only prior to immediate use. For extended storage freeze at -20°C or below for 12 months. Avoid cycles of freezing and thawing.
Expiration:	See kit insert for complete instructions.

Images

Mouse Neuropilin-2 ELISA Kit

ELISA

Mouse Neuropilin-2 ELISA Kit standard curve.



Disclaimer

This product is for research use only and is not intended for therapeutic or diagnostic applications. Please contact a technical service representative for more information. All products of animal origin manufactured by Rockland Immunochemicals are derived from starting materials of North American origin. Collection was performed in United States Department of Agriculture (USDA) inspected facilities and all materials have been inspected and certified to be free of disease and suitable for exportation. All properties listed are typical characteristics and are not specifications. All suggestions and data are offered in good faith but without guarantee as conditions and methods of use of our products are beyond our control. All claims must be made within 30 days following the date of delivery. The prospective user must determine the suitability of our materials before adopting them on a commercial scale. Suggested uses of our products are not recommendations to use our products in violation of any patent or as a license under any patent of Rockland Immunochemicals, Inc. If you require a commercial license to use this material and do not have one, then return this material, unopened to: Rockland Inc., P.O. BOX 5199, Limerick, Pennsylvania, USA.