

Datasheet for KOA0795

Rat IL-3 ELISA Kit

Overview

| | |
|----------------------|---|
| Description: | Rat IL-3 AccuSignal ELISA Kit - KOA0795 |
| Item No.: | KOA0795 |
| Size: | 1 Kit |
| Applications: | ELISA |
| Reactivity: | Rat |
| Range: | 7.8 pg/ml - 500 pg/ml |

Product Details

| | |
|----------------------------|--|
| Background: | The gene IL-3 encodes interleukin 3, a hematopoietic colony-stimulating factor(CSF) that is capable of supporting the proliferation of a broad range of hematopoietic cell types. Interleukin-3(IL-3), a protein of 140 amino acids, is chemically synthesized by means of an automated peptide synthesizer and is shown to have the biological activities attributed to native IL-3. The cDNA sequence for murine interleukin-3, one of the colony stimulating factors that regulate haematopoiesis, codes for a polypeptide of 166 amino acids including a putative signal peptide. The mouse IL 3 gene is located on chromosome 11. The human gene encoding IL 3 is tandemly arrayed on the long arm of chromosome 5.5 The standard product used in this kit is recombinant human IL-3, consisting of 133 amino acids with the molecular mass of 15KDa. |
| Synonyms: | Burst promoting activity, Colony stimulating factor multiple, Eosinophil colony stimulating factor, Hematopoietic growth factor, IL 3, IL-3, IL3, IL3_HUMAN, Interleukin 3, Interleukin-3, Mast cell growth factor, MCGF, Multi CSF, Multilineage colony stimulating factor, Multipotential colony stimulating factor, Multipotential colony-stimulating factor, P cell stimulating factor, P-cell-stimulating factor, Thy1 inducing factor |
| Detection Kit Type: | ELISA Kit |
| Detection Range: | 7.8 pg/ml - 500 pg/ml |
| Sensitivity: | <10 pg/ml |

Target Details

| | |
|--------------------|-----|
| Gene Name: | IL3 |
| Reactivity: | Rat |

| | |
|----------------------------|--|
| Immunogen: | Expression system for standard: E.coli; Immunogen sequence: I27-C169 |
| Purity/Specificity: | Natural and recombinant rat IL-3. There is no detectable cross-reactivity with other relevant proteins. |
| Relevant Links: | <ul style="list-style-type: none">• UniProtKB - P04823• NCBI - NP_113701.1• GenID - 24465• KOA0795 Protocol |

Application Details

| | |
|-----------------------------|---|
| Tested Applications: | ELISA |
| Application Note: | Useful in Sandwich ELISA for Quantitative Detection of Antigen. Aliquot 0.1ml per well of the 500pg/ml, 250pg/ml, 125pg/ml, 62.5pg/ml, 31.3pg/ml, 15.6pg/ml, 7.8pg/ml rat IL-3 standard solutions into the precoated 96-well plate. Add 0.1ml of the sample diluent buffer into the control well (Zero well). Add 0.1ml of each properly diluted sample of rat cell culture supernates or serum to each empty well. We recommend that each rat IL-3 standard solution and each sample is measured in duplicate. |
| Assay Dilutions: | All assays should be optimized by the user. Recommended dilutions (if any) may be listed below. |
| Other: | DOE: 2-8° C - 05/10/2022 -20° C - 11/10/2022 |

Formulation

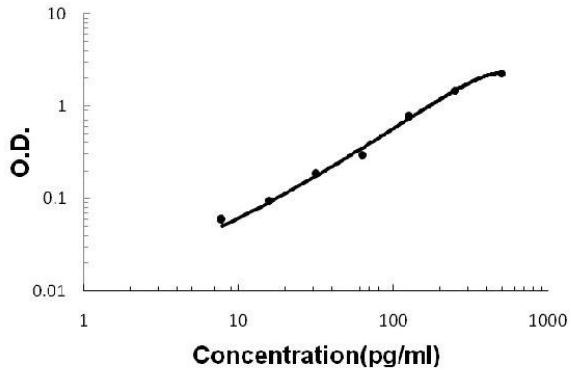
| | |
|-----------------------|-------|
| Concentration: | 1 Kit |
|-----------------------|-------|

Shipping & Handling

| | |
|----------------------------|---|
| Shipping Condition: | Wet Ice |
| Storage Condition: | Store vials at 4°C prior to opening. Centrifuge product if not completely clear after standing at room temperature. This product is stable for 6 months at 4°C as an undiluted liquid. Dilute only prior to immediate use. For extended storage freeze at -20°C or below for 12 months. Avoid cycles of freezing and thawing. |
| Expiration: | See kit insert for complete instructions. |

Images

Rat IL-3 ELISA Kit



ELISA

Rat IL-3 ELISA Kit standard curve.

Disclaimer

This product is for research use only and is not intended for therapeutic or diagnostic applications. Please contact a technical service representative for more information. All products of animal origin manufactured by Rockland Immunochemicals are derived from starting materials of North American origin. Collection was performed in United States Department of Agriculture (USDA) inspected facilities and all materials have been inspected and certified to be free of disease and suitable for exportation. All properties listed are typical characteristics and are not specifications. All suggestions and data are offered in good faith but without guarantee as conditions and methods of use of our products are beyond our control. All claims must be made within 30 days following the date of delivery. The prospective user must determine the suitability of our materials before adopting them on a commercial scale. Suggested uses of our products are not recommendations to use our products in violation of any patent or as a license under any patent of Rockland Immunochemicals, Inc. If you require a commercial license to use this material and do not have one, then return this material, unopened to: Rockland Inc., P.O. BOX 5199, Limerick, Pennsylvania, USA.