

Datasheet for KOA0781

Human TGFBR2 ELISA Kit**Overview**

Description:	Human TGFBR2 AccuSignal ELISA Kit - KOA0781
Item No.:	KOA0781
Size:	1 Kit
Applications:	ELISA
Reactivity:	Human
Range:	15.6 pg/ml - 1000 pg/ml

Product Details

Background:	TGFBR2(transforming growth factor, beta receptor II (70/80kDa)), also known as TGF-beta receptor type-2, TGFR-2, TGF-beta type II receptor, Transforming growth factor-beta receptor type II(TGF-beta receptor type II, TbetaR-II), is a member of the Ser/Thr protein kinase family and the TGFBR2 receptor subfamily. A TGFBR2 cDNA encoding a deduced 565-amino acid protein with a calculated molecular mass of approximately 60 kD in length. The encoded protein is a transmembrane protein that has a protein kinase domain, forms a heterodimeric complex with another receptor protein, and binds TGF-beta. This receptor/ligand complex phosphorylates proteins, which then enter the nucleus and regulate the transcription of a subset of genes related to cell proliferation. Mutations in this gene have been associated with Marfan syndrome, Loeys-Deitz aortic aneurysm syndrome, Osler-Weber-Rendu syndrome, and the development of various types of tumors. Alternatively spliced transcript variants encoding different informants have been cha...
Synonyms:	AAT3, FAA3, LDS1B, LDS2, LDS2B, MFS2, RIIC, TAAD2, TbetaR-II, TGF-beta receptor type II, TGF-beta receptor type-2, TGF-beta type II receptor, TGFbeta RII, Tgfbr2, TGFR 2, TGFR-2, TGFR2_HUMAN, Transforming growth factor beta receptor II (70/80kDa), Transforming growth factor-beta receptor type II
Detection Kit Type:	ELISA Kit
Detection Range:	15.6 pg/ml - 1000 pg/ml
Sensitivity:	<10 pg/ml

Target Details**Gene Name:** TGFBR2

Reactivity:	Human
Immunogen:	Expression system for standard: NSO; Immunogen sequence: I24-D159
Purity/Specificity:	Natural and recombinant human TGFBR2. There is no detectable cross-reactivity with other relevant proteins.
Relevant Links:	<ul style="list-style-type: none">• UniProtKB - P37173• NCBI - NP_001020018.1• GeneID - 7048• KOA0781 Protocol

Application Details

Tested Applications:	ELISA
Application Note:	Useful in Sandwich ELISA for Quantitative Detection of Antigen. Aliquot 0.1ml per well of the 1000pg/ml, 500pg/ml, 250pg/ml, 125pg/ml, 62.5pg/ml, 31.2pg/ml, 15.6pg/ml human TGFBR2 standard solutions into the precoated 96-well plate. Add 0.1ml of the sample diluent buffer into the control well (Zero well). Add 0.1ml of each properly diluted sample of human cell culture supernates, serum or plasma(heparin, EDTA) to each empty well. It is recommended that each human TGFBR2 standard solution and each sample be measured in duplicate.
Assay Dilutions:	All assays should be optimized by the user. Recommended dilutions (if any) may be listed below.

Formulation

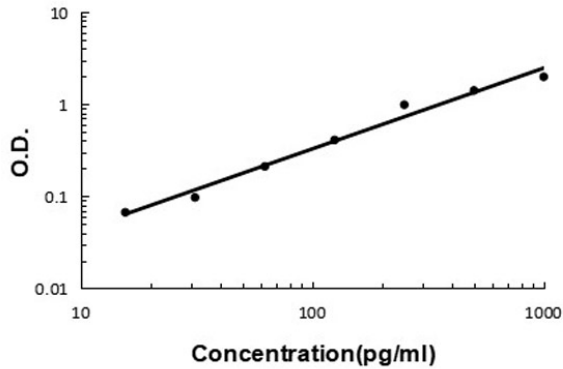
Anticoagulant:	Heparin Sodium
-----------------------	----------------

Shipping & Handling

Shipping Condition:	Wet Ice
Storage Condition:	Store vials at 4°C prior to opening. Centrifuge product if not completely clear after standing at room temperature. This product is stable for 6 months at 4°C as an undiluted liquid. Dilute only prior to immediate use. For extended storage freeze at -20°C or below for 12 months. Avoid cycles of freezing and thawing.
Expiration:	See kit insert for complete instructions.

Images

Human TGFBR2 ELISA Kit



ELISA

Human TGFBR2 ELISA Kit standard curve.

Disclaimer

This product is for research use only and is not intended for therapeutic or diagnostic applications. Please contact a technical service representative for more information. All products of animal origin manufactured by Rockland Immunochemicals are derived from starting materials of North American origin. Collection was performed in United States Department of Agriculture (USDA) inspected facilities and all materials have been inspected and certified to be free of disease and suitable for exportation. All properties listed are typical characteristics and are not specifications. All suggestions and data are offered in good faith but without guarantee as conditions and methods of use of our products are beyond our control. All claims must be made within 30 days following the date of delivery. The prospective user must determine the suitability of our materials before adopting them on a commercial scale. Suggested uses of our products are not recommendations to use our products in violation of any patent or as a license under any patent of Rockland Immunochemicals, Inc. If you require a commercial license to use this material and do not have one, then return this material, unopened to: Rockland Inc., P.O. BOX 5199, Limerick, Pennsylvania, USA.