

## Datasheet for KOA0776

**Rat TIMP-2 ELISA Kit****Overview**

<b>Description:</b>	Rat TIMP-2 AccuSignal ELISA Kit - KOA0776
<b>Item No.:</b>	KOA0776
<b>Size:</b>	1 Kit
<b>Applications:</b>	ELISA
<b>Reactivity:</b>	Rat
<b>Range:</b>	156 pg/ml - 10000 pg/ml

**Product Details**

<b>Background:</b>	TIMP-2 gen is encoded by 5 exons spanning 83 kb of genomic DNA. TIMP-2 is 83 kilobase pairs (kb) long with exon-intron splicing sites located in preserved positions among the three members of the TIMP family. The gene for tissue inhibitor of metalloproteinases-2 is localized on human chromosome arm 17q25. TIMP-2 abrogates angiogenic factor-induced endothelial cell proliferation in vitro and angiogenesis in vivo independent of MMP inhibition. The standard product used in this kit is recombinant human TIMP-2 with the molecular mass of 22Kda and 194 amino acid.
<b>Synonyms:</b>	CSC 21K, CSC21K, D11Bwg1104e, DDC8, Metalloproteinase inhibitor 2, Metalloproteinase inhibitor 2 precursor, MGC105282, OTTMUSP00000004170, OTTMUSP00000004171, RP23-394O9.2, TIMP 2, TIMP metallopeptidase inhibitor 2, Tissue inhibitor of metalloproteinase 2, Tissue inhibitor of metalloproteinases 2
<b>Detection Kit Type:</b>	ELISA Kit
<b>Detection Range:</b>	156 pg/ml - 10000 pg/ml
<b>Sensitivity:</b>	<10 pg/ml

**Target Details**

<b>Gene Name:</b>	TIMP2
<b>Reactivity:</b>	Rat
<b>Immunogen:</b>	Expression system for standard: NSO; Immunogen sequence: C27-P220

<b>Purity/Specificity:</b>	Natural and recombinant rat TIMP-2. There is no detectable cross-reactivity with other relevant proteins.
<b>Relevant Links:</b>	<ul style="list-style-type: none"><li>• <a href="#">UniProtKB - P30121</a></li><li>• <a href="#">NCBI - NP_068824.1</a></li><li>• <a href="#">GeneID - 29543</a></li><li>• <a href="#">KOA0776 Protocol</a></li></ul>

## Application Details

<b>Tested Applications:</b>	ELISA
<b>Application Note:</b>	Useful in Sandwich ELISA for Quantitative Detection of Antigen. Aliquot 0.1ml per well of the 10,000pg/ml, 5000pg/ml, 2500pg/ml, 1250pg/ml, 625pg/ml, 313pg/ml, 156pg/ml rat TIMP-2 standard solutions into the precoated 96-well plate. Add 0.1ml of the sample diluent buffer into the control well (Zero well). Add 0.1ml of each properly diluted sample of rat cell culture supernates, serum or plasma(heparin, EDTA) to each empty well. We recommend that each rat TIMP-2 standard solution and each sample is measured in duplicate.
<b>Assay Dilutions:</b>	All assays should be optimized by the user. Recommended dilutions (if any) may be listed below.

## Formulation

<b>Anticoagulant:</b>	Heparin Sodium
-----------------------	----------------

## Shipping & Handling

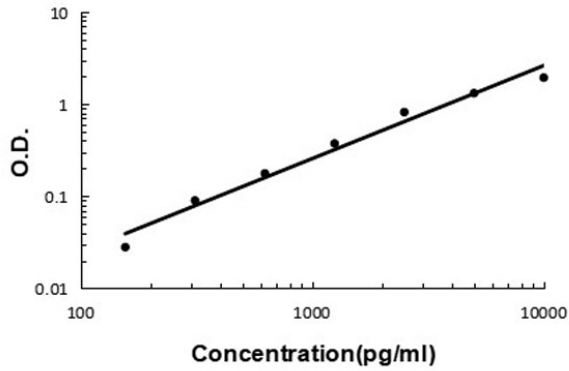
<b>Shipping Condition:</b>	Wet Ice
<b>Storage Condition:</b>	Store vials at 4°C prior to opening. Centrifuge product if not completely clear after standing at room temperature. This product is stable for 6 months at 4°C as an undiluted liquid. Dilute only prior to immediate use. For extended storage freeze at -20°C or below for 12 months. Avoid cycles of freezing and thawing.
<b>Expiration:</b>	See kit insert for complete instructions.

## Images

### Rat TIMP-2 ELISA Kit

#### ELISA

Rat TIMP-2 ELISA Kit standard curve.



## Disclaimer

This product is for research use only and is not intended for therapeutic or diagnostic applications. Please contact a technical service representative for more information. All products of animal origin manufactured by Rockland Immunochemicals are derived from starting materials of North American origin. Collection was performed in United States Department of Agriculture (USDA) inspected facilities and all materials have been inspected and certified to be free of disease and suitable for exportation. All properties listed are typical characteristics and are not specifications. All suggestions and data are offered in good faith but without guarantee as conditions and methods of use of our products are beyond our control. All claims must be made within 30 days following the date of delivery. The prospective user must determine the suitability of our materials before adopting them on a commercial scale. Suggested uses of our products are not recommendations to use our products in violation of any patent or as a license under any patent of Rockland Immunochemicals, Inc. If you require a commercial license to use this material and do not have one, then return this material, unopened to: Rockland Inc., P.O. BOX 5199, Limerick, Pennsylvania, USA.