

Datasheet for KOA0774

Rat CCL7 - MCP-3 ELISA Kit**Overview**

Description:	Rat CCL7/MCP-3 AccuSignal ELISA Kit - KOA0774
Item No.:	KOA0774
Size:	1 Kit
Applications:	ELISA
Reactivity:	Rat
Range:	15.6 pg/ml - 1000 pg/ml

Product Details

Background:	Chemokine(C-C motif) ligand 7(CCL7) is a small cytokine known as a chemokine that was previously called monocyte-specific chemokine 3(MCP3). It belongs to the C-C chemokine family. By fluorescence in situ hybridization, mapped the MCP3 gene to chromosome 17q11.2-q12. MCP3 was identified as a physiologic substrate of gelatinase A. Cleaved MCP3 binds to CC-chemokine receptors-1, -2, and -3, but no longer induces calcium fluxes or promotes chemotaxis, and instead acts as a general chemokine antagonist that dampens inflammation, suggested that matrix metalloproteinases are both effectors and regulators of the inflammatory response.
Synonyms:	C-C motif chemokine 7, Ccl7, CCL7_HUMAN, Chemokine CC Motif Ligand 7, Chemotactic protein 3, FIC, Intercrine/chemokine MARC, MARC, MCP 3, MCP-3, Monocyte chemoattractant protein 3, Monocyte chemotactic protein 3, NC28, RANTES, sis homolog, RP23-350G1.4, SCYA6, SCYA7, Small inducible cytokine A7, Small-inducible cytokine A7
Detection Kit Type:	ELISA Kit
Detection Range:	15.6 pg/ml - 1000 pg/ml
Sensitivity:	<10 pg/ml

Target Details

Gene Name:	CCL7
Reactivity:	Rat
Immunogen:	Expression system for standard: E.coli; Immunogen sequence: Q24-P97

Purity/Specificity: Natural and recombinant rat CCL7. There is no detectable cross-reactivity with other relevant proteins.

Relevant Links:

- [UniProtKB - Q9QXY8](#)
- [NCBI - NP_001007613.1](#)
- [GeneID - 287561](#)
- [KOA0774 Protocol](#)

Application Details

Tested Applications: ELISA

Application Note: Useful in Sandwich ELISA for Quantitative Detection of Antigen. Aliquot 0.1ml per well of the 1000pg/ml, 500pg/ml, 250pg/ml, 125pg/ml, 62.5pg/ml, 31.2pg/ml, 15.6pg/ml rat CCL7 standard solutions into the precoated 96-well plate. Add 0.1ml of the sample diluent buffer into the control well (Zero well). Add 0.1ml of each properly diluted sample of rat cell culture supernates, serum or plasma (heparin, EDTA) to each empty well. It is recommended that each rat CCL7 standard solution and each sample be measured in duplicate.

Assay Dilutions: All assays should be optimized by the user. Recommended dilutions (if any) may be listed below.

Formulation

Anticoagulant: Heparin Sodium

Shipping & Handling

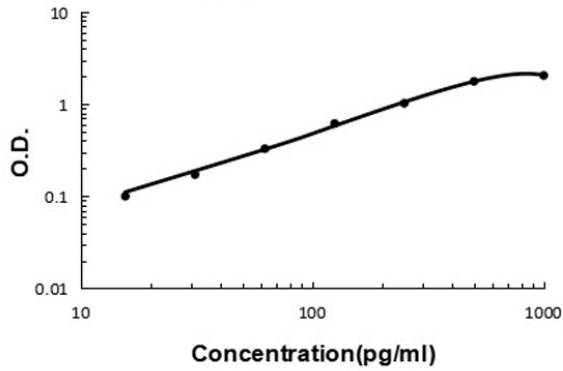
Shipping Condition: Wet Ice

Storage Condition: Store vials at 4°C prior to opening. Centrifuge product if not completely clear after standing at room temperature. This product is stable for 6 months at 4°C as an undiluted liquid. Dilute only prior to immediate use. For extended storage freeze at -20°C or below for 12 months. Avoid cycles of freezing and thawing.

Expiration: See kit insert for complete instructions.

Images

Rat CCL7 ELISA Kit



ELISA

Rat CCL7/MCP-3 ELISA Kit standard curve.

Disclaimer

This product is for research use only and is not intended for therapeutic or diagnostic applications. Please contact a technical service representative for more information. All products of animal origin manufactured by Rockland Immunochemicals are derived from starting materials of North American origin. Collection was performed in United States Department of Agriculture (USDA) inspected facilities and all materials have been inspected and certified to be free of disease and suitable for exportation. All properties listed are typical characteristics and are not specifications. All suggestions and data are offered in good faith but without guarantee as conditions and methods of use of our products are beyond our control. All claims must be made within 30 days following the date of delivery. The prospective user must determine the suitability of our materials before adopting them on a commercial scale. Suggested uses of our products are not recommendations to use our products in violation of any patent or as a license under any patent of Rockland Immunochemicals, Inc. If you require a commercial license to use this material and do not have one, then return this material, unopened to: Rockland Inc., P.O. BOX 5199, Limerick, Pennsylvania, USA.