

Datasheet for KOA0762

Human Galectin-7 ELISA Kit**Overview**

Description:	Human Galectin-7 AccuSignal ELISA Kit - KOA0762
Item No.:	KOA0762
Size:	1 Kit
Applications:	ELISA
Reactivity:	Human
Range:	156 pg/ml - 10,000 pg/ml

Product Details

Background:	Galectin-7, also known as GAL7, is a protein that in humans is encoded by the LGALS7 gene. This gene is mapped to 19q13.2. Galectins belong to a family of related beta-galactoside-binding lectins, also referred to as S-type or S-Lac lectins. Members of this family have been implicated in a variety of functions, including growth regulation, cell adhesion, migration, neoplastic transformation, and immune responses. Differential and in situ hybridizations indicate that this lectin is specifically expressed in keratinocytes. It has been found that expression of Galectin-7 was markedly upregulated in corneal epithelium after injury and that exogenous galectin-7 stimulated reepithelialization of corneal wounds.
Synonyms:	GAL7, HKL14, Human keratinocyte lectin 14, Lectin galactoside binding soluble 7, LGALS7, LGALS7B, MGC151215, MGC151217, OTTMUSP00000025970, OTTMUSP00000041956, p53 induced gene 1 protein, PI7, PIG1, TP53I1
Detection Kit Type:	ELISA Kit
Detection Range:	156 pg/ml - 10,000 pg/ml
Sensitivity:	<10 pg/ml

Target Details

Gene Name:	LGALS7
Reactivity:	Human
Immunogen:	Expression system for standard: E.coli; Immunogen sequence: S2-F136

Purity/Specificity: Natural and recombinant human Galectin-7. There is no detectable cross-reactivity with other relevant proteins.

Relevant Links:

- [UniProtKB - P47929](#)
- [NCBI - NP_001035972.1](#)
- [GeneID - 3963](#)
- [KOA0762 Protocol](#)

Application Details

Tested Applications: ELISA

Application Note: Useful in Sandwich ELISA for Quantitative Detection of Antigen. Aliquot 0.1ml per well of the 10,000pg/ml, 5000pg/ml, 2500pg/ml, 1250pg/ml, 625pg/ml, 312pg/ml, 156pg/ml human Galectin-7 standard solutions into the precoated 96-well plate. Add 0.1ml of the sample diluent buffer into the control well (Zero well). Add 0.1ml of each properly diluted sample of human cell culture supernates serum or plasma(heparin, EDTA) to each empty well. It is recommended that each human Galectin-7 standard solution and each sample be measured in duplicate.

Assay Dilutions: All assays should be optimized by the user. Recommended dilutions (if any) may be listed below.

Formulation

Anticoagulant: Heparin Sodium

Shipping & Handling

Shipping Condition: Wet Ice

Storage Condition: Store vials at 4°C prior to opening. Centrifuge product if not completely clear after standing at room temperature. This product is stable for 6 months at 4°C as an undiluted liquid. Dilute only prior to immediate use. For extended storage freeze at -20°C or below for 12 months. Avoid cycles of freezing and thawing.

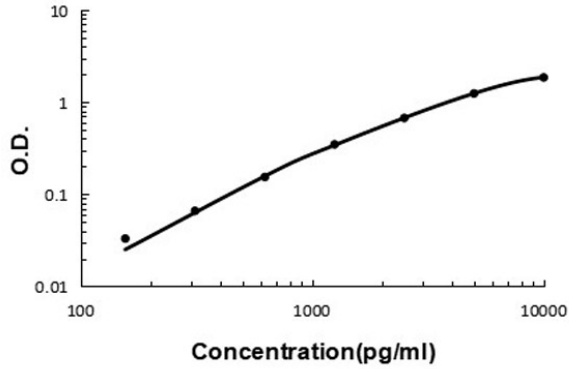
Expiration: See kit insert for complete instructions.

Images

Human Galectin-7 ELISA Kit

ELISA

Human Galectin-7 ELISA Kit standard curve.



Disclaimer

This product is for research use only and is not intended for therapeutic or diagnostic applications. Please contact a technical service representative for more information. All products of animal origin manufactured by Rockland Immunochemicals are derived from starting materials of North American origin. Collection was performed in United States Department of Agriculture (USDA) inspected facilities and all materials have been inspected and certified to be free of disease and suitable for exportation. All properties listed are typical characteristics and are not specifications. All suggestions and data are offered in good faith but without guarantee as conditions and methods of use of our products are beyond our control. All claims must be made within 30 days following the date of delivery. The prospective user must determine the suitability of our materials before adopting them on a commercial scale. Suggested uses of our products are not recommendations to use our products in violation of any patent or as a license under any patent of Rockland Immunochemicals, Inc. If you require a commercial license to use this material and do not have one, then return this material, unopened to: Rockland Inc., P.O. BOX 5199, Limerick, Pennsylvania, USA.