

Datasheet for KOA0756

Human Granulysin ELISA Kit**Overview**

Description:	Human Granulysin AccuSignal ELISA Kit - KOA0756
Item No.:	KOA0756
Size:	1 Kit
Applications:	ELISA
Reactivity:	Human
Range:	31.2 pg/ml - 2000 pg/ml

Product Details

Background:	Granulysin is a substance released by cytotoxic T cells(CD8) when they are attached to infected body cells. The product of this gene is a member of the saposin-like protein(SAPLIP) family. It is mapped to 2p11.2. Granulysin functions to create holes in the target cell membrane and destroy it. It is able to induce apoptosis in target cells and also has antimicrobial action. This gene is expressed in cytolytic granules with perforin, a pore forming protein, and granzymes that are also involved in cytolysis. In addition to it, Granulysin is broadly antimicrobial, killing microbes that cause, for example, tuberculosis and malaria, and can destroy some tumors. A series of peptides generated from the amino acid sequence of Granulysin are potential antibiotics. It has been found that secretory Granulysin is a key molecule responsible for the disseminated keratinocyte death in SJS/TEN.
Synonyms:	519, D2S69E, GNLY, GNLY_HUMAN, Granulysin, LAG 2, LAG2, Lymphocyte activation gene 2, Lymphokine LAG 2, Lymphokine LAG-2, NKG 5, NKG5, Protein NKG5, T cell activation protein 519, T lymphocyte activation gene 519, T-cell activation protein 519, TLA519
Detection Kit Type:	ELISA Kit
Detection Range:	31.2 pg/ml - 2000 pg/ml
Sensitivity:	<10 pg/ml

Target Details

Gene Name:	GNLY
Reactivity:	Human

Immunogen:	Expression system for standard: NSO; Immunogen sequence: M1-L145
Purity/Specificity:	Natural and recombinant human Granulysin. There is no detectable cross-reactivity with other relevant proteins.
Relevant Links:	<ul style="list-style-type: none">• UniProtKB - P22749• NCBI - NP_001289687.1• GenelD - 10578• KOA0756 Protocol

Application Details

Tested Applications:	ELISA
Application Note:	Useful in Sandwich ELISA for Quantitative Detection of Antigen. Aliquot 0.1ml per well of the 2000pg/ml, 1000pg/ml, 500pg/ml, 250pg/ml, 125pg/ml, 62.5pg/ml, 31.2pg/ml human Granulysin standard solutions into the precoated 96-well plate. Add 0.1ml of the sample diluent buffer into the control well (Zero well). Add 0.1ml of each properly diluted sample of human cell culture supernates, serum or plasma (heparin, EDTA) to each empty well. It is recommended that each human Granulysin standard solution and each sample be measured in duplicate.
Assay Dilutions:	All assays should be optimized by the user. Recommended dilutions (if any) may be listed below.

Formulation

Anticoagulant:	Heparin Sodium
-----------------------	----------------

Shipping & Handling

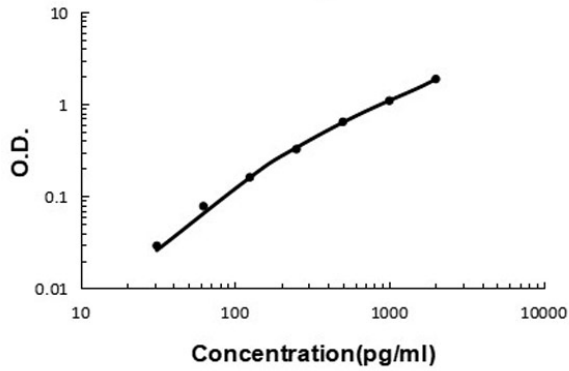
Shipping Condition:	Wet Ice
Storage Condition:	Store vials at 4°C prior to opening. Centrifuge product if not completely clear after standing at room temperature. This product is stable for 6 months at 4°C as an undiluted liquid. Dilute only prior to immediate use. For extended storage freeze at -20°C or below for 12 months. Avoid cycles of freezing and thawing.
Expiration:	See kit insert for complete instructions.

Images

Human Granulysin ELISA Kit

ELISA

Human Granulysin ELISA Kit standard curve.



Disclaimer

This product is for research use only and is not intended for therapeutic or diagnostic applications. Please contact a technical service representative for more information. All products of animal origin manufactured by Rockland Immunochemicals are derived from starting materials of North American origin. Collection was performed in United States Department of Agriculture (USDA) inspected facilities and all materials have been inspected and certified to be free of disease and suitable for exportation. All properties listed are typical characteristics and are not specifications. All suggestions and data are offered in good faith but without guarantee as conditions and methods of use of our products are beyond our control. All claims must be made within 30 days following the date of delivery. The prospective user must determine the suitability of our materials before adopting them on a commercial scale. Suggested uses of our products are not recommendations to use our products in violation of any patent or as a license under any patent of Rockland Immunochemicals, Inc. If you require a commercial license to use this material and do not have one, then return this material, unopened to: Rockland Inc., P.O. BOX 5199, Limerick, Pennsylvania, USA.