

Datasheet for KOA0753

Mouse DLL4 ELISA Kit**Overview**

Description:	Mouse DLL4 AccuSignal ELISA Kit - KOA0753
Item No.:	KOA0753
Size:	1 Kit
Applications:	ELISA
Reactivity:	Mouse
Range:	156 pg/ml - 10,000 pg/ml

Product Details

Background:	Delta like ligand 4 is a protein that in humans is encoded by the DLL4 gene. It is mapped to 15q15.1. This gene is a homolog of the Drosophila delta gene. DLL4 is a transmembrane ligand for Notch receptors that shows restricted expression to endothelial cells (ECs), in particular to arteries and capillaries, and is involved in vascular development, and it also appeared to be a major trigger of Notch receptor activities previously implicated in arterial and vascular development. Mouse DLL4 could activate mouse Notch1 and mouse Notch4. DLL4 acts as a negative regulator of tumor angiogenesis, its blockade results in the striking uncoupling of tumor growth from vessel density, presenting a novel therapeutic approach even for tumors resistant to anti-VEGF therapies. In addition to it, this gene also plays an important role in promoting Th17 effector activity during mycobacterial challenge.
Synonyms:	Delta 4, delta 4 precursor, Delta ligand 4, delta ligand 4 precursor, Delta like 4, Delta like 4 homolog, Delta like 4 protein, Delta like protein 4, Delta-like 4 (Drosophila), Delta-like protein 4, Delta4, DLL 4, DLL4, DLL4_HUMAN, Drosophila Delta homolog 4, hdelta2, Homeobox protein DLL-4, MGC126344, Notch ligand delta 2, Notch ligand DLL4, notch ligand DLL4 precursor, XDLL-4
Detection Kit Type:	ELISA Kit
Detection Range:	156 pg/ml - 10,000 pg/ml
Sensitivity:	<10 pg/ml

Target Details

Gene Name:	DLL4
-------------------	------

Reactivity:	Mouse
Immunogen:	Expression system for standard: NSO; Immunogen sequence: S28-P525
Purity/Specificity:	Natural and recombinant mouse DLL4. There is no detectable cross-reactivity with other relevant proteins.
Relevant Links:	<ul style="list-style-type: none">• UniProtKB - Q9JI71• NCBI - NP_062327.2• GenelD - 54485• KOA0753 Protocol

Application Details

Tested Applications:	ELISA
Application Note:	Useful in Sandwich ELISA for Quantitative Detection of Antigen. Aliquot 0.1ml per well of the 10,000pg/ml, 5000pg/ml, 2500pg/ml, 1250pg/ml, 625pg/ml, 312pg/ml, 156pg/ml mouse DLL4 standard solutions into the precoated 96-well plate. Add 0.1ml of the sample diluent buffer into the control well (Zero well). Add 0.1ml of each properly diluted sample of mouse cell culture supernates, serum or plasma(heparin, EDTA) to each empty well. It is recommended that each mouse DLL4 standard solution and each sample be measured in duplicate.
Assay Dilutions:	All assays should be optimized by the user. Recommended dilutions (if any) may be listed below.

Formulation

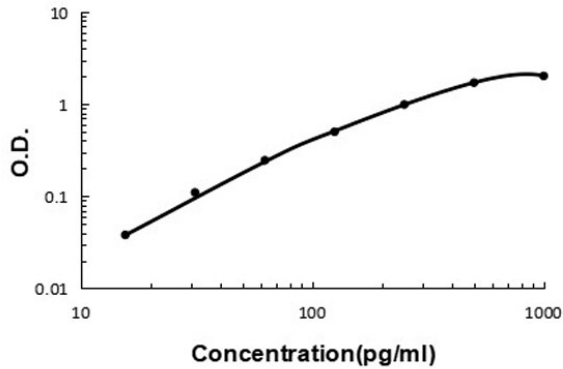
Anticoagulant:	Heparin Sodium
-----------------------	----------------

Shipping & Handling

Shipping Condition:	Wet Ice
Storage Condition:	Store vials at 4°C prior to opening. Centrifuge product if not completely clear after standing at room temperature. This product is stable for 6 months at 4°C as an undiluted liquid. Dilute only prior to immediate use. For extended storage freeze at -20°C or below for 12 months. Avoid cycles of freezing and thawing.
Expiration:	See kit insert for complete instructions.

Images

Mouse DLL4 ELISA Kit



ELISA

Mouse DLL4 ELISA Kit standard curve.

Disclaimer

This product is for research use only and is not intended for therapeutic or diagnostic applications. Please contact a technical service representative for more information. All products of animal origin manufactured by Rockland Immunochemicals are derived from starting materials of North American origin. Collection was performed in United States Department of Agriculture (USDA) inspected facilities and all materials have been inspected and certified to be free of disease and suitable for exportation. All properties listed are typical characteristics and are not specifications. All suggestions and data are offered in good faith but without guarantee as conditions and methods of use of our products are beyond our control. All claims must be made within 30 days following the date of delivery. The prospective user must determine the suitability of our materials before adopting them on a commercial scale. Suggested uses of our products are not recommendations to use our products in violation of any patent or as a license under any patent of Rockland Immunochemicals, Inc. If you require a commercial license to use this material and do not have one, then return this material, unopened to: Rockland Inc., P.O. BOX 5199, Limerick, Pennsylvania, USA.