

Datasheet for KOA0746

Rat Lumican ELISA Kit**Overview**

Description:	Rat Lumican AccuSignal ELISA Kit - KOA0746
Item No.:	KOA0746
Size:	1 Kit
Applications:	ELISA
Reactivity:	Rat
Range:	156 pg/ml - 10,000 pg/ml

Product Details

Background:	Lumican, also known as LUM, is a protein which in humans is encoded by the LUM gene. This gene is a member of the small interstitial proteoglycan gene(SIPG) family, and it is a keratan sulfate proteoglycan which presents large quantities in the corneal stroma and in interstitial collagenous matrices of the heart, aorta, skeletal muscle, skin, and intervertebral discs. Lumican is mapped to 12q21.33, it interacts with collagen and limits growth of fibrils in diameter. In the cornea, Lumican not only interacts with collagen molecules to limit fibril growth, but also plays a critical role in the regular spacing of fibrils and acquisition of corneal transparency by virtue of its keratan sulfate-containing glycosaminoglycan side chains LDC.
Synonyms:	Keratan sulfate proteoglycan lumican, KSPG Lumican, LDC, LUM, LUM_HUMAN, Lumican, Lumican precursor, SLRR2D
Detection Kit Type:	ELISA Kit
Detection Range:	156 pg/ml - 10,000 pg/ml
Sensitivity:	<10 pg/ml

Target Details

Gene Name:	LUM
Reactivity:	Rat
Immunogen:	Expression system for standard: NSO; Immunogen sequence: Q19-N338
Purity/Specificity:	Natural and recombinant rat Lumican. There is no detectable cross-reactivity with other relevant proteins.

Relevant Links:	<ul style="list-style-type: none">• UniProtKB - P51886• NCBI - NP_112312.1• GeneID - 81682• KOA0746 Protocol
------------------------	---

Application Details

Tested Applications:	ELISA
Application Note:	Useful in Sandwich ELISA for Quantitative Detection of Antigen. Aliquot 0.1ml per well of the 10,000pg/ml, 5000pg/ml, 2500pg/ml, 1250pg/ml, 625pg/ml, 312pg/ml, 156pg/ml rat Lumican standard solutions into the precoated 96-well plate. Add 0.1ml of the sample diluent buffer into the control well (Zero well). Add 0.1ml of each properly diluted sample of rat cell culture supernates, serum or plasma(heparin) to each empty well. It is recommended that each rat Lumican standard solution and each sample be measured in duplicate.
Assay Dilutions:	All assays should be optimized by the user. Recommended dilutions (if any) may be listed below.

Formulation

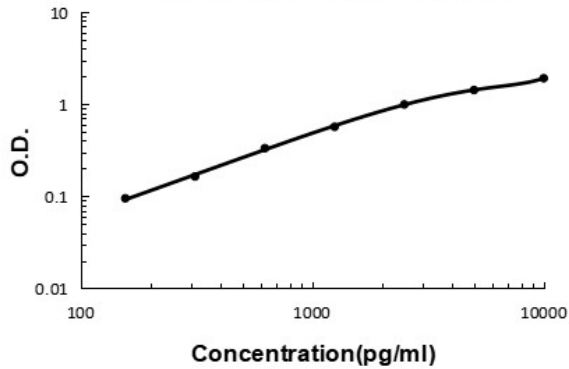
Anticoagulant:	Heparin Sodium
-----------------------	----------------

Shipping & Handling

Shipping Condition:	Wet Ice
Storage Condition:	Store vials at 4°C prior to opening. Centrifuge product if not completely clear after standing at room temperature. This product is stable for 6 months at 4°C as an undiluted liquid. Dilute only prior to immediate use. For extended storage freeze at -20°C or below for 12 months. Avoid cycles of freezing and thawing.
Expiration:	See kit insert for complete instructions.

Images

Rat Lumican ELISA Kit



ELISA

Rat Lumican ELISA Kit standard curve.

Disclaimer

This product is for research use only and is not intended for therapeutic or diagnostic applications. Please contact a technical service representative for more information. All products of animal origin manufactured by Rockland Immunochemicals are derived from starting materials of North American origin. Collection was performed in United States Department of Agriculture (USDA) inspected facilities and all materials have been inspected and certified to be free of disease and suitable for exportation. All properties listed are typical characteristics and are not specifications. All suggestions and data are offered in good faith but without guarantee as conditions and methods of use of our products are beyond our control. All claims must be made within 30 days following the date of delivery. The prospective user must determine the suitability of our materials before adopting them on a commercial scale. Suggested uses of our products are not recommendations to use our products in violation of any patent or as a license under any patent of Rockland Immunochemicals, Inc. If you require a commercial license to use this material and do not have one, then return this material, unopened to: Rockland Inc., P.O. BOX 5199, Limerick, Pennsylvania, USA.