

## Datasheet for KOA0739

**Human Thioredoxin ELISA Kit****Overview**

<b>Description:</b>	Human Thioredoxin AccuSignal ELISA Kit - KOA0739
<b>Item No.:</b>	KOA0739
<b>Size:</b>	1 Kit
<b>Applications:</b>	ELISA
<b>Reactivity:</b>	Human
<b>Range:</b>	156 pg/ml - 10,000 pg/ml

**Product Details**

<b>Background:</b>	Thioredoxin is a class of small redox proteins known to be present in all organisms. It is mapped to 9q31.3. Thioredoxins are proteins that act as antioxidants by facilitating the reduction of other proteins by cysteine thiol-disulfide exchange. They can also act as electron donors to peroxidases and ribonucleotide reductase. Thioredoxin is a 12-kD oxidoreductase enzyme containing a dithiol-disulfide active site. It plays a role in many important biological processes, including redox signaling. This gene also plays a central role in humans and is increasingly linked to medicine through their response to reactive oxygen species (ROS). VDUP1 is a key stress-responsive inhibitor of Thioredoxin activity in cardiomyocytes.
<b>Synonyms:</b>	ADF, ATL-derived factor, DKFZp686B1993, MGC61975, SASP, Surface associated sulphhydryl protein, Surface-associated sulphhydryl protein, THIO_HUMAN, Thioredoxin, TRDX, TRX 1, Trx, TRX1, TXN, TXN protein
<b>Detection Kit Type:</b>	ELISA Kit
<b>Detection Range:</b>	156 pg/ml - 10,000 pg/ml
<b>Sensitivity:</b>	<10 pg/ml

**Target Details**

<b>Gene Name:</b>	TXN
<b>Reactivity:</b>	Human
<b>Immunogen:</b>	Expression system for standard: E.coli; Immunogen sequence: V2-V105

<b>Purity/Specificity:</b>	Natural and recombinant human Thioredoxin. There is no detectable cross-reactivity with other relevant proteins.
<b>Relevant Links:</b>	<ul style="list-style-type: none"><li>• <a href="#">UniProtKB - P10599</a></li><li>• <a href="#">NCBI - NP_001231867.1</a></li><li>• <a href="#">GeneID - 7295</a></li><li>• <a href="#">KOA0739 Protocol</a></li></ul>

## Application Details

<b>Tested Applications:</b>	ELISA
<b>Application Note:</b>	Useful in Sandwich ELISA for Quantitative Detection of Antigen. Aliquot 0.1ml per well of the 10,000pg/ml, 5000pg/ml, 2500pg/ml, 1250pg/ml, 625pg/ml, 312pg/ml, 156pg/ml human Thioredoxin standard solutions into the precoated 96-well plate. Add 0.1ml of the sample diluent buffer into the control well (Zero well). Add 0.1ml of the sample properly diluted sample of human cell culture supernates, serum or plasma(heparin) to each empty well. It is recommended that each human Thioredoxin standard solution and each sample be measured in duplicate.
<b>Assay Dilutions:</b>	All assays should be optimized by the user. Recommended dilutions (if any) may be listed below.
<b>ELISA:</b>	156pg/ml-10,000pg/ml

## Formulation

<b>Anticoagulant:</b>	Heparin Sodium
-----------------------	----------------

## Shipping & Handling

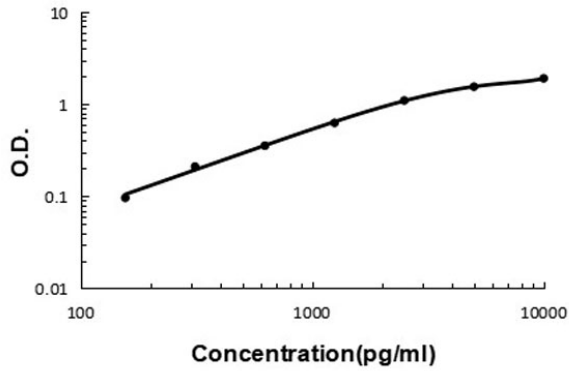
<b>Shipping Condition:</b>	Wet Ice
<b>Storage Condition:</b>	Store vials at 4°C prior to opening. Centrifuge product if not completely clear after standing at room temperature. This product is stable for 6 months at 4°C as an undiluted liquid. Dilute only prior to immediate use. For extended storage freeze at -20°C or below for 12 months. Avoid cycles of freezing and thawing.
<b>Expiration:</b>	See kit insert for complete instructions.

## Images

### Human Thioredoxin ELISA Kit

#### ELISA

Human Thioredoxin ELISA Kit standard curve.



### Disclaimer

This product is for research use only and is not intended for therapeutic or diagnostic applications. Please contact a technical service representative for more information. All products of animal origin manufactured by Rockland Immunochemicals are derived from starting materials of North American origin. Collection was performed in United States Department of Agriculture (USDA) inspected facilities and all materials have been inspected and certified to be free of disease and suitable for exportation. All properties listed are typical characteristics and are not specifications. All suggestions and data are offered in good faith but without guarantee as conditions and methods of use of our products are beyond our control. All claims must be made within 30 days following the date of delivery. The prospective user must determine the suitability of our materials before adopting them on a commercial scale. Suggested uses of our products are not recommendations to use our products in violation of any patent or as a license under any patent of Rockland Immunochemicals, Inc. If you require a commercial license to use this material and do not have one, then return this material, unopened to: Rockland Inc., P.O. BOX 5199, Limerick, Pennsylvania, USA.