

Datasheet for KOA0722**Human Relaxin 1 ELISA Kit****Overview**

Description:	Human Relaxin 1 AccuSignal ELISA Kit - KOA0722
Item No.:	KOA0722
Size:	1 Kit
Applications:	ELISA
Reactivity:	Human
Range:	78 pg/ml - 5000 pg/ml

Product Details

Background:	Relaxin 1 is a member of relaxin-like peptide family. Relaxin gene maps to human chromosome 19 near D19Mit23. Relaxin is a peptide hormone produced by the corpora lutea of ovaries during pregnancy in many mammalian species, including man. Relaxin widens the pubic bone and facilitates labor, it also softens the cervix (cervical ripening), and relaxes the uterine musculature. However, its significance may reach much further. Relaxin affects collagen metabolism, inhibiting collagen synthesis and enhancing its breakdown by increasing matrix metalloproteinases. It also enhances angiogenesis and is a potent renal vasodilator.
Synonyms:	H1RLX, Preprorelaxin H1, PreprorelaxinH1, Prorelaxin, Prorelaxin H1, ProrelaxinH1, REL1_HUMAN, Relaxin 1 (H1), Relaxin A chain, Relaxin H1, Relaxin1, RelaxinH1, RLN 1, RLN1, RLX H1, RLXH 1, RLXH
Detection Kit Type:	ELISA Kit
Detection Range:	78 pg/ml - 5000 pg/ml
Sensitivity:	<10 pg/ml

Target Details

Gene Name:	RLN1
Reactivity:	Human
Immunogen:	Expression system for standard: E.coli; Immunogen sequence: R162-Cys185(A)&K26-S53(B)
Purity/Specificity:	Natural and recombinant human Relaxin 1. There is no detectable cross-reactivity with other relevant proteins.

Relevant Links:	<ul style="list-style-type: none">• UniProtKB - P04808• NCBI - NP_008842.1• GeneID - 6013• KOA0722 Protocol
------------------------	--

Application Details

Tested Applications:	ELISA
Application Note:	Useful in Sandwich ELISA for Quantitative Detection of Antigen. Aliquot 0.1ml per well of 5000pg/ml, 2500pg/ml, 1250pg/ml, 625pg/ml, 313pg/ml, 156pg/ml, 78pg/ml human Relaxin 1 standard solutions into the pre-coated 96-well plate. Add 0.1ml of the sample diluent buffer into the control well (Zero well). Add 0.1ml of each properly diluted sample of human cell culture supernates, serum or plasma(heparin) to each empty well. We recommend that each human Relaxin 1 standard solution and each sample is measured in duplicate.
Assay Dilutions:	All assays should be optimized by the user. Recommended dilutions (if any) may be listed below.

Formulation

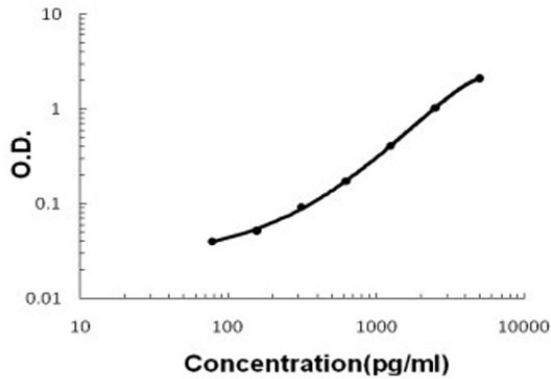
Anticoagulant:	Heparin Sodium
-----------------------	----------------

Shipping & Handling

Shipping Condition:	Wet Ice
Storage Condition:	Store vials at 4°C prior to opening. Centrifuge product if not completely clear after standing at room temperature. This product is stable for 6 months at 4°C as an undiluted liquid. Dilute only prior to immediate use. For extended storage freeze at -20°C or below for 12 months. Avoid cycles of freezing and thawing.
Expiration:	See kit insert for complete instructions.

Images

Human Relaxin 1 ELISA Kit



ELISA

Human Relaxin 1 ELISA Kit standard curve.

Disclaimer

This product is for research use only and is not intended for therapeutic or diagnostic applications. Please contact a technical service representative for more information. All products of animal origin manufactured by Rockland Immunochemicals are derived from starting materials of North American origin. Collection was performed in United States Department of Agriculture (USDA) inspected facilities and all materials have been inspected and certified to be free of disease and suitable for exportation. All properties listed are typical characteristics and are not specifications. All suggestions and data are offered in good faith but without guarantee as conditions and methods of use of our products are beyond our control. All claims must be made within 30 days following the date of delivery. The prospective user must determine the suitability of our materials before adopting them on a commercial scale. Suggested uses of our products are not recommendations to use our products in violation of any patent or as a license under any patent of Rockland Immunochemicals, Inc. If you require a commercial license to use this material and do not have one, then return this material, unopened to: Rockland Inc., P.O. BOX 5199, Limerick, Pennsylvania, USA.