

Datasheet for KOA0721**Mouse JAM A - F11R ELISA Kit****Overview**

Description:	Mouse JAM-A/F11R AccuSignal ELISA Kit - KOA0721
Item No.:	KOA0721
Size:	1 Kit
Applications:	ELISA
Reactivity:	Mouse
Range:	31.2 pg/ml - 2000 pg/ml

Product Details

Background:	Junctional adhesion molecule A(JAM-A) is a protein that in humans is encoded by the F11R gene. It is mapped to 1q23.3. This gene is an immunoglobulin-like molecule that colocalizes with tight junctions in endothelium and epithelium and is also found on blood leukocytes and platelets. JAM-A plays an important role in the regulation of tight junction assembly in epithelia. In addition, it can act as a receptor for reovirus, a ligand for the integrin LFA1, involved in leukocyte transmigration, and a platelet receptor. JAM-A has a nonredundant role in controlling DC motility, trafficking to lymph nodes, and activation of specific immunity.
Synonyms:	CD 321, CD321, CD321 antigen, ESTM33, F11 receptor, F11R, JAM 1, JAM A, JAM, JAM-1, JAM-A, JAM1, JAM1_HUMAN, JAMA, JCAM, Jcam1, Junction adhesion molecule 1, Junction adhesion molecule , mouse, homolog of, Junctional adhesion molecule 1, Junctional adhesion molecule A, KAT, Ly106, PAM 1, PAM-1, PAM1, Platelet adhesion molecule 1, Platelet adhesion molecule, Platelet F11 receptor, PRO301, UNQ264, UNQ264/PRO301
Detection Kit Type:	ELISA Kit
Detection Range:	31.2 pg/ml - 2000 pg/ml
Sensitivity:	<10 pg/ml

Target Details

Gene Name:	F11R
Reactivity:	Mouse
Immunogen:	Expression system for standard: NSO; Immunogen sequence: K27-G238

Purity/Specificity: Natural and recombinant mouse JAM-A. There is no detectable cross-reactivity with other relevant proteins.

Relevant Links:

- [UniProtKB - O88792](#)
- [NCBI - NP_766235.1](#)
- [GeneID - 16456](#)
- [KOA0721 Protocol](#)

Application Details

Tested Applications: ELISA

Application Note: Useful in Sandwich ELISA for Quantitative Detection of Antigen. Aliquot 0.1ml per well of the 2000pg/ml, 1000pg/ml, 500pg/ml, 250pg/ml, 125pg/ml, 62.5pg/ml, 31.2pg/ml mouse JAM-A standard solutions into the precoated 96-well plate. Add 0.1ml of the sample diluent buffer into the control well (Zero well). Add 0.1ml of each properly diluted sample of mouse cell culture supernates, serum or plasma (heparin, EDTA) to each empty well. It is recommended that each mouse JAM-A standard solution and each sample be measured in duplicate.

Assay Dilutions: All assays should be optimized by the user. Recommended dilutions (if any) may be listed below.

Formulation

Anticoagulant: Heparin Sodium

Shipping & Handling

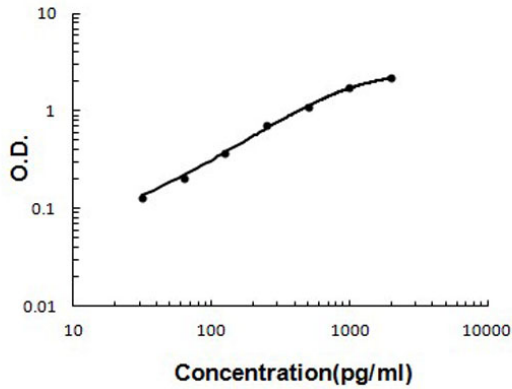
Shipping Condition: Wet Ice

Storage Condition: Store vials at 4°C prior to opening. Centrifuge product if not completely clear after standing at room temperature. This product is stable for 6 months at 4°C as an undiluted liquid. Dilute only prior to immediate use. For extended storage freeze at -20°C or below for 12 months. Avoid cycles of freezing and thawing.

Expiration: See kit insert for complete instructions.

Images

Mouse JAM-A ELISA Kit



ELISA

Mouse JAM-A/F11R ELISA Kit standard curve.

Disclaimer

This product is for research use only and is not intended for therapeutic or diagnostic applications. Please contact a technical service representative for more information. All products of animal origin manufactured by Rockland Immunochemicals are derived from starting materials of North American origin. Collection was performed in United States Department of Agriculture (USDA) inspected facilities and all materials have been inspected and certified to be free of disease and suitable for exportation. All properties listed are typical characteristics and are not specifications. All suggestions and data are offered in good faith but without guarantee as conditions and methods of use of our products are beyond our control. All claims must be made within 30 days following the date of delivery. The prospective user must determine the suitability of our materials before adopting them on a commercial scale. Suggested uses of our products are not recommendations to use our products in violation of any patent or as a license under any patent of Rockland Immunochemicals, Inc. If you require a commercial license to use this material and do not have one, then return this material, unopened to: Rockland Inc., P.O. BOX 5199, Limerick, Pennsylvania, USA.