

Datasheet for KOA0714**Human soluble CD6 ELISA Kit****Overview**

Description:	Human soluble CD6 AccuSignal ELISA Kit - KOA0714
Item No.:	KOA0714
Size:	1 Kit
Applications:	ELISA
Reactivity:	Human
Range:	156 pg/ml - 10,000 pg/ml

Product Details

Background:	CD6(Cluster of Differentiation 6) is a human protein encoded by the CD6 gene. It is mapped to 11q12.2. CD6 is expressed predominantly in peripheral T cells and mature medullary thymocytes. This gene encodes a protein found on the outer membrane of T-lymphocytes as well as some other immune cells. The encoded protein contains three scavenger receptor cysteine-rich(SRCR) domains and a binding site for an activated leukocyte cell adhesion molecule. The gene product is important for continuation of T cell activation. What's more, this gene may be associated with susceptibility to multiple sclerosis.
Synonyms:	CD_antigen=CD6, CD6, CD6 antigen Tp120, CD6 molecule, CD6_HUMAN, FLJ44171, OX52, T cell differentiation antigen CD6, T-cell differentiation antigen CD6, T12, TP120
Detection Kit Type:	ELISA Kit
Detection Range:	156 pg/ml - 10,000 pg/ml
Sensitivity:	<10 pg/ml

Target Details

Gene Name:	CD6
Reactivity:	Human
Immunogen:	Expression system for standard: NSO; Immunogen sequence: H18-E398
Purity/Specificity:	Natural and recombinant human CD6. There is no detectable cross-reactivity with other relevant proteins.

Relevant Links:	<ul style="list-style-type: none">• UniProtKB - P30203• NCBI - NP_001241679.1• GeneID - 923• KOA0714 Protocol
------------------------	--

Application Details

Tested Applications:	ELISA
Application Note:	Useful in Sandwich ELISA for Quantitative Detection of Antigen. Aliquot 0.1ml per well of the 10,000pg/ml, 5000pg/ml, 2500pg/ml, 1250pg/ml, 625pg/ml, 312pg/ml, 156pg/ml human CD6 standard solutions into the precoated 96-well plate. Add 0.1ml of the sample diluent buffer into the control well (Zero well). Add 0.1ml of each properly diluted sample of human cell culture supernates, serum or plasma(heparin, EDTA) to each empty well. It is recommended that each human CD6 standard solution and each sample be measured in duplicate.
Assay Dilutions:	All assays should be optimized by the user. Recommended dilutions (if any) may be listed below.
Other:	DOE: 2-8° C - 04/08/2020 -20° C - 10/07/2020

Formulation

Concentration:	1 Kit
Anticoagulant:	Heparin Sodium

Shipping & Handling

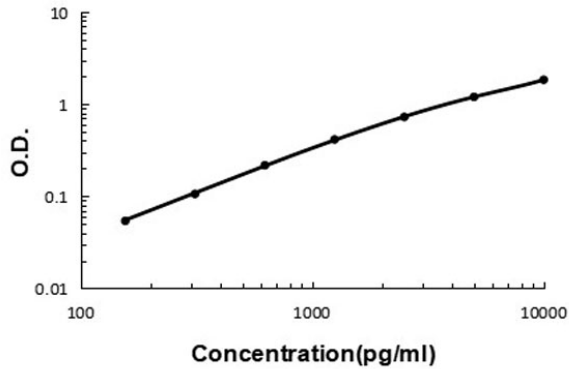
Shipping Condition:	Wet Ice
Storage Condition:	Store vials at 4°C prior to opening. Centrifuge product if not completely clear after standing at room temperature. This product is stable for 6 months at 4°C as an undiluted liquid. Dilute only prior to immediate use. For extended storage freeze at -20°C or below for 12 months. Avoid cycles of freezing and thawing.
Expiration:	See kit insert for complete instructions.

Images

Human soluble CD6 ELISA Kit

ELISA

Human soluble CD6 ELISA Kit standard curve.



Disclaimer

This product is for research use only and is not intended for therapeutic or diagnostic applications. Please contact a technical service representative for more information. All products of animal origin manufactured by Rockland Immunochemicals are derived from starting materials of North American origin. Collection was performed in United States Department of Agriculture (USDA) inspected facilities and all materials have been inspected and certified to be free of disease and suitable for exportation. All properties listed are typical characteristics and are not specifications. All suggestions and data are offered in good faith but without guarantee as conditions and methods of use of our products are beyond our control. All claims must be made within 30 days following the date of delivery. The prospective user must determine the suitability of our materials before adopting them on a commercial scale. Suggested uses of our products are not recommendations to use our products in violation of any patent or as a license under any patent of Rockland Immunochemicals, Inc. If you require a commercial license to use this material and do not have one, then return this material, unopened to: Rockland Inc., P.O. BOX 5199, Limerick, Pennsylvania, USA.