

## Datasheet for KOA0702

**Human Cystatin B ELISA Kit****Overview**

<b>Description:</b>	Human Cystatin B AccuSignal ELISA Kit - KOA0702
<b>Item No.:</b>	KOA0702
<b>Size:</b>	1 Kit
<b>Applications:</b>	ELISA
<b>Reactivity:</b>	Human
<b>Range:</b>	62.5 pg/ml - 4000 pg/ml

**Product Details**

<b>Background:</b>	Cystatin B(CSTB), also called STFB, is a small protein that is a member of the superfamily of cysteine protease inhibitors. It has been isolated from human spleen and liver and its amino acid sequence has been fully determined. The cystatin B gene is located on 21q22.3. It is widely distributed and is localized mostly intracellularly, but has been found extracellularly. The protein is able to form a dimer stabilized by noncovalent forces, inhibiting papain and cathepsins I, h and b. Its role is thought to be as a protector against the proteinases leaking from lysosomes. A cystatin B multiprotein complex might have a specific cerebellar function, and that the loss of this function might contribute to the etiopathogenesis of EPM1. Upon differentiation to myotubes, CSTB becomes excluded from the nucleus and lysosomes, suggesting that the subcellular distribution of CSTB is dependent on the differentiation status of the cell.
<b>Synonyms:</b>	CHROW21, CPI B, CPI-B, CST6, CSTB, Cystatin B, Cystatin-B, CYTB, CYTB_HUMAN, EPM1, EPM1A, Liver thiol proteinase inhibitor, PME, Stefin-B, STFB, ULD
<b>Detection Kit Type:</b>	ELISA Kit
<b>Detection Range:</b>	62.5 pg/ml - 4000 pg/ml
<b>Sensitivity:</b>	<10 pg/ml

**Target Details**

<b>Gene Name:</b>	CSTB
<b>Reactivity:</b>	Human
<b>Immunogen:</b>	Expression system for standard: E.coli; Immunogen sequence: M2-F98

**Purity/Specificity:** Natural and recombinant human Cystatin B. There is no detectable cross-reactivity with other relevant proteins.

---

**Relevant Links:**

- [UniProtKB - P04080](#)
- [NCBI - NP\\_000091.1](#)
- [GeneID - 1476](#)
- [KOA0702 Protocol](#)

---

## Application Details

**Tested Applications:** ELISA

---

**Application Note:** Useful in Sandwich ELISA for Quantitative Detection of Antigen. Aliquot 0.1ml per well of the 4000pg/ml, 2000pg/ml, 1000pg/ml, 500pg/ml, 250pg/ml, 125pg/ml, 62.5pg/ml human Cystatin B standard solutions into the precoated 96-well plate. Add 0.1ml of the sample diluent buffer into the control well (Zero well). Add 0.1ml of each properly diluted sample of human cell culture supernates, serum, plasma(heparin, EDTA), saliva, urine or human milk to each empty well. We recommend that each human Cystatin B standard solution and each sample is measured in duplicate.

---

**Assay Dilutions:** All assays should be optimized by the user. Recommended dilutions (if any) may be listed below.

---

## Formulation

**Anticoagulant:** Heparin Sodium

---

## Shipping & Handling

**Shipping Condition:** Wet Ice

---

**Storage Condition:** Store vials at 4°C prior to opening. Centrifuge product if not completely clear after standing at room temperature. This product is stable for 6 months at 4°C as an undiluted liquid. Dilute only prior to immediate use. For extended storage freeze at -20°C or below for 12 months. Avoid cycles of freezing and thawing.

---

**Expiration:** See kit insert for complete instructions.

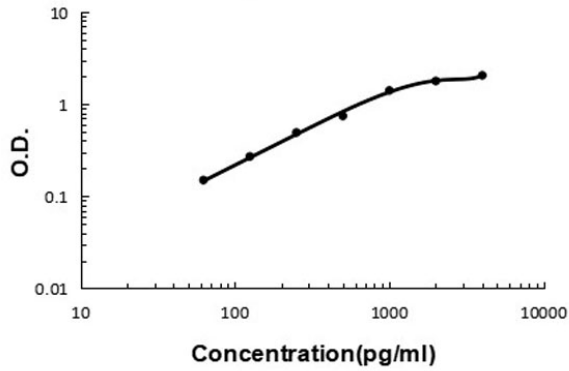
---

## Images

### Human Cystatin B ELISA Kit

#### ELISA

Human Cystatin B ELISA Kit standard curve.



### Disclaimer

This product is for research use only and is not intended for therapeutic or diagnostic applications. Please contact a technical service representative for more information. All products of animal origin manufactured by Rockland Immunochemicals are derived from starting materials of North American origin. Collection was performed in United States Department of Agriculture (USDA) inspected facilities and all materials have been inspected and certified to be free of disease and suitable for exportation. All properties listed are typical characteristics and are not specifications. All suggestions and data are offered in good faith but without guarantee as conditions and methods of use of our products are beyond our control. All claims must be made within 30 days following the date of delivery. The prospective user must determine the suitability of our materials before adopting them on a commercial scale. Suggested uses of our products are not recommendations to use our products in violation of any patent or as a license under any patent of Rockland Immunochemicals, Inc. If you require a commercial license to use this material and do not have one, then return this material, unopened to: Rockland Inc., P.O. BOX 5199, Limerick, Pennsylvania, USA.