

Datasheet for KOA0700**Human CYR61 - CCN1 ELISA Kit****Overview**

Description:	Human CYR61/CCN1 AccuSignal ELISA Kit - KOA0700
Item No.:	KOA0700
Size:	1 Kit
Applications:	ELISA
Reactivity:	Human
Range:	31.2 pg/ml - 2000 pg/ml

Product Details

Background:	Cysteine-rich angiogenic inducer 61(CYR61) or CCN family member 1(CCN1), is a matricellular protein that in humans is encoded by the CYR61 gene. This gene is mapped to 1p22.3. CYR61 is capable of regulating a broad range of cellular activities, including cell adhesion, migration, proliferation, differentiation, apoptosis, and senescence through interaction with cell surface integrin receptors and heparan sulfate proteoglycans. During embryonic development, CYR61 is critical for cardiac septal morphogenesis, blood vessel formation in placenta, and vascular integrity. In adulthood CYR61 plays important roles in inflammation and tissue repair, and is associated with diseases related to chronic inflammation, including rheumatoid arthritis, atherosclerosis, diabetes-related nephropathy and retinopathy, and many different forms of cancers.
Synonyms:	3CH61, CCN 1, CCN family member 1, CCN1, CCN1, CYR 61, Cyr61, CYR61 protein, CYR61 protein precursor, CYR61 protein precursor, CYR61_HUMAN, Cysteine rich angiogenic inducer 61, Cysteine rich heparin binding protein 61, Cysteine-rich angiogenic inducer 61, GIG 1, GIG1, GIG1 protein, IBP-10, IGF-binding protein 10, Igfbp 10, IGFBP-10, IGFBP10, Insulin like growth factor binding protein 10, Insulin-like growth factor-binding protein 10, Protein CYR61, Protein GIG1
Detection Kit Type:	ELISA Kit
Detection Range:	31.2 pg/ml - 2000 pg/ml
Sensitivity:	<10 pg/ml

Target Details

Gene Name:	CYR61
-------------------	-------

Reactivity:	Human
Immunogen:	Expression system for standard: CHO; Immunogen sequence: A22-D381
Purity/Specificity:	Natural and recombinant human CYR61. There is no detectable cross-reactivity with other relevant proteins.
Relevant Links:	<ul style="list-style-type: none">• UniProtKB - O00622• NCBI - NP_001545.2• GenID - 3491• KOA0700 Protocol

Application Details

Tested Applications:	ELISA
Application Note:	Useful in Sandwich ELISA for Quantitative Detection of Antigen. Aliquot 0.1ml per well of the 2000pg/ml, 1000pg/ml, 500pg/ml, 250pg/ml, 125pg/ml, 62.5pg/ml, 31.2pg/ml human CYR61 standard solutions into the precoated 96-well plate. Add 0.1ml of the sample diluent buffer into the control well (Zero well). Add 0.1ml of each properly diluted sample of human cell culture supernates, serum, plasma (heparin, EDTA), saliva, urine or human milk to each empty well. It is recommended that each human CYR61 standard solution and each sample be measured in duplicate.
Assay Dilutions:	All assays should be optimized by the user. Recommended dilutions (if any) may be listed below.

Formulation

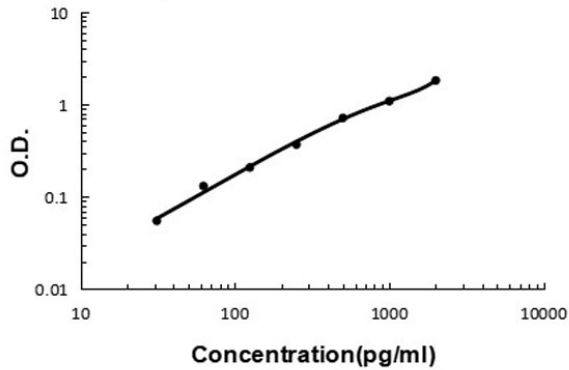
Anticoagulant:	Heparin Sodium
-----------------------	----------------

Shipping & Handling

Shipping Condition:	Wet Ice
Storage Condition:	Store vials at 4°C prior to opening. Centrifuge product if not completely clear after standing at room temperature. This product is stable for 6 months at 4°C as an undiluted liquid. Dilute only prior to immediate use. For extended storage freeze at -20°C or below for 12 months. Avoid cycles of freezing and thawing.
Expiration:	See kit insert for complete instructions.

Images

Human CYR61 ELISA Kit



ELISA

Human CYR61/CCN1 ELISA Kit standard curve.

Disclaimer

This product is for research use only and is not intended for therapeutic or diagnostic applications. Please contact a technical service representative for more information. All products of animal origin manufactured by Rockland Immunochemicals are derived from starting materials of North American origin. Collection was performed in United States Department of Agriculture (USDA) inspected facilities and all materials have been inspected and certified to be free of disease and suitable for exportation. All properties listed are typical characteristics and are not specifications. All suggestions and data are offered in good faith but without guarantee as conditions and methods of use of our products are beyond our control. All claims must be made within 30 days following the date of delivery. The prospective user must determine the suitability of our materials before adopting them on a commercial scale. Suggested uses of our products are not recommendations to use our products in violation of any patent or as a license under any patent of Rockland Immunochemicals, Inc. If you require a commercial license to use this material and do not have one, then return this material, unopened to: Rockland Inc., P.O. BOX 5199, Limerick, Pennsylvania, USA.