

## Datasheet for KOA0687

**Mouse ACE2 ELISA Kit****Overview**

<b>Description:</b>	Mouse ACE2 AccuSignal ELISA Kit - KOA0687
<b>Item No.:</b>	KOA0687
<b>Size:</b>	1 Kit
<b>Applications:</b>	ELISA
<b>Reactivity:</b>	Mouse
<b>Range:</b>	62.5 pg/ml - 4000 pg/ml

**Product Details**

<b>Background:</b>	Angiotensin I-converting enzyme 2(ACE 2) is a protein belongs to the angiotensin-converting enzyme family of dipeptidyl carboxydipeptidases and has considerable homology to human angiotensin 1 converting enzyme. By sequence similarity to a sequence in GenBank, this gene is mapped to Xp22.2. This secreted protein catalyzes the cleavage of angiotensin I into angiotensin 1-9, and angiotensin II into the vasodilator angiotensin 1-7. The organ- and cell-specific expression of this gene suggests that it may play a role in the regulation of cardiovascular and renal function, as well as fertility. In addition, the encoded protein is a functional receptor for the spike glycoprotein of the human coronaviruses SARS and HCoV-NL63.
<b>Synonyms:</b>	ACE 2, ACE related carboxypeptidase, ACE-related carboxypeptidase, ACE2, ACE2_HUMAN, ACEH, Angiotensin converting enzyme 2, Angiotensin converting enzyme homolog, Angiotensin converting enzyme like protein, Angiotensin I Converting Enzyme (peptidyl dipeptidase A) 2, Angiotensin I converting enzyme 2, Angiotensin-converting enzyme homolog, DKFZP434A014, EC 3.4.17, metalloprotease MPROT 15, Metalloprotease MPROT15, OTTHUMP00000022963, Processed angiotensin-converting enzyme 2
<b>Detection Kit Type:</b>	ELISA Kit
<b>Detection Range:</b>	62.5 pg/ml - 4000 pg/ml
<b>Sensitivity:</b>	<10 pg/ml

**Target Details**

<b>Gene Name:</b>	ACE2
<b>Reactivity:</b>	Mouse

<b>Immunogen:</b>	Expression system for standard: CHO; Immunogen sequence: Q18-T740
<b>Purity/Specificity:</b>	Natural and recombinant mouse ACE2. There is no detectable cross-reactivity with other relevant proteins.
<b>Relevant Links:</b>	<ul style="list-style-type: none"><li>• <a href="#">UniProtKB - Q8R0I0</a></li><li>• <a href="#">NCBI - NP_001123985.1</a></li><li>• <a href="#">GenelD - 70008</a></li><li>• <a href="#">KOA0687 Protocol</a></li></ul>

## Application Details

<b>Tested Applications:</b>	ELISA
<b>Application Note:</b>	Useful in Sandwich ELISA for Quantitative Detection of Antigen. Aliquot 0.1ml per well of the 4000pg/ml, 2000pg/ml, 1000pg/ml, 500pg/ml, 250pg/ml, 125pg/ml, 62.5pg/ml mouse ACE2 standard solutions into the precoated 96-well plate. Add 0.1ml of the sample diluent buffer into the control well (Zero well). Add 0.1ml of each properly diluted sample of mouse cell culture supernates, serum or plasma(heparin, EDTA) to each empty well. We recommend that each mouse ACE2 standard solution and each sample is measured in duplicate.
<b>Assay Dilutions:</b>	All assays should be optimized by the user. Recommended dilutions (if any) may be listed below.

## Formulation

<b>Anticoagulant:</b>	Heparin Sodium
-----------------------	----------------

## Shipping & Handling

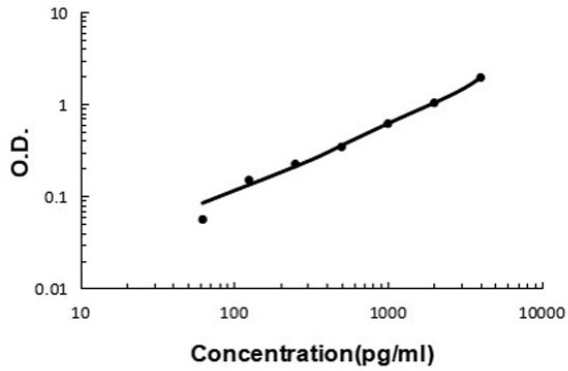
<b>Shipping Condition:</b>	Wet Ice
<b>Storage Condition:</b>	Store vials at 4°C prior to opening. Centrifuge product if not completely clear after standing at room temperature. This product is stable for 6 months at 4°C as an undiluted liquid. Dilute only prior to immediate use. For extended storage freeze at -20°C or below for 12 months. Avoid cycles of freezing and thawing.
<b>Expiration:</b>	See kit insert for complete instructions.

## Images

### Mouse ACE2 ELISA Kit

#### ELISA

Mouse ACE2 ELISA Kit standard curve.



### Disclaimer

This product is for research use only and is not intended for therapeutic or diagnostic applications. Please contact a technical service representative for more information. All products of animal origin manufactured by Rockland Immunochemicals are derived from starting materials of North American origin. Collection was performed in United States Department of Agriculture (USDA) inspected facilities and all materials have been inspected and certified to be free of disease and suitable for exportation. All properties listed are typical characteristics and are not specifications. All suggestions and data are offered in good faith but without guarantee as conditions and methods of use of our products are beyond our control. All claims must be made within 30 days following the date of delivery. The prospective user must determine the suitability of our materials before adopting them on a commercial scale. Suggested uses of our products are not recommendations to use our products in violation of any patent or as a license under any patent of Rockland Immunochemicals, Inc. If you require a commercial license to use this material and do not have one, then return this material, unopened to: Rockland Inc., P.O. BOX 5199, Limerick, Pennsylvania, USA.