

Datasheet for KOA0683

Mouse ALCAM ELISA Kit**Overview**

Description:	Mouse ALCAM AccuSignal ELISA Kit - KOA0683
Item No.:	KOA0683
Size:	1 Kit
Applications:	ELISA
Reactivity:	Mouse
Range:	156 pg/ml - 10,000 pg/ml

Product Details

Background:	CD166 antigen is a 100-105 kD typeI transmembrane glycoprotein that is a member of the immunoglobulin superfamily of proteins. In humans it is encoded by the ALCAM gene. The gene was mapped to human chromosome 3q13.1-q13.2 by fluorescence in situ hybridization of cDNA probes to metaphase chromosomes. It is also called CD166 (cluster of differentiation 166), MEMD, SC-1/DM-GRASP/BEN in the chicken, and KG-CAM in the rat. It is expressed on activated T cells, activated monocytes, epithelial cells, fibroblasts, neurons, melanoma cells, and also in sweat and sebaceous glands. CD166 protein expression is reported to be upregulated in a cell line deriving from a metastasizing melanoma. CD166 plays an important role in mediating adhesion interactions between thymic epithelial cells and CD6+ cells during intrathymic T cell development. Recently, CD166 has also been used as a potential cancer stem cell marker.
Synonyms:	Activated leukocyte cell adhesion molecule, ALCAM, ALCAM protein, CD 166, CD166, CD166 antigen, CD166_HUMAN, FLJ3851, FLJ38514, MEMD, MGC71733
Detection Kit Type:	ELISA Kit
Detection Range:	156 pg/ml - 10,000 pg/ml
Sensitivity:	<10 pg/ml

Target Details

Gene Name:	ALCAM
Reactivity:	Mouse
Immunogen:	Expression system for standard: NSO; Immunogen sequence: W28-K527

Purity/Specificity: Natural and recombinant mouse ALCAM. There is no detectable cross-reactivity with other relevant proteins.

Relevant Links:

- [UniProtKB - Q61490](#)
- [NCBI - NP_033785.1](#)
- [GeneID - 11658](#)
- [KOA0683 Protocol](#)

Application Details

Tested Applications: ELISA

Application Note: Useful in Sandwich ELISA for Quantitative Detection of Antigen. Aliquot 0.1ml per well of the 10,000pg/ml, 5000pg/ml, 2500pg/ml, 1250pg/ml, 625pg/ml, 312pg/ml, 156pg/ml mouse ALCAM standard solutions into the precoated 96-well plate. Add 0.1ml of the sample diluent buffer into the control well (Zero well). Add 0.1ml of each properly diluted sample of mouse cell culture supernates, serum or plasma (heparin, EDTA) to each empty well. It is recommended that each mouse ALCAM standard solution and each sample be measured in duplicate.

Assay Dilutions: All assays should be optimized by the user. Recommended dilutions (if any) may be listed below.

Formulation

Anticoagulant: Heparin Sodium

Shipping & Handling

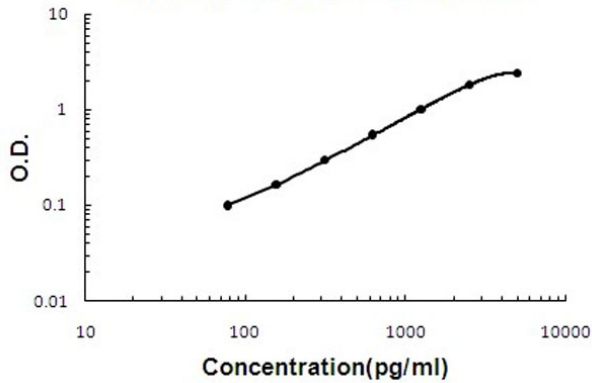
Shipping Condition: Wet Ice

Storage Condition: Store vials at 4°C prior to opening. Centrifuge product if not completely clear after standing at room temperature. This product is stable for 6 months at 4°C as an undiluted liquid. Dilute only prior to immediate use. For extended storage freeze at -20°C or below for 12 months. Avoid cycles of freezing and thawing.

Expiration: See kit insert for complete instructions.

Images

Mouse ALCAM ELISA Kit



ELISA

Mouse ALCAM ELISA Kit standard curve.

Disclaimer

This product is for research use only and is not intended for therapeutic or diagnostic applications. Please contact a technical service representative for more information. All products of animal origin manufactured by Rockland Immunochemicals are derived from starting materials of North American origin. Collection was performed in United States Department of Agriculture (USDA) inspected facilities and all materials have been inspected and certified to be free of disease and suitable for exportation. All properties listed are typical characteristics and are not specifications. All suggestions and data are offered in good faith but without guarantee as conditions and methods of use of our products are beyond our control. All claims must be made within 30 days following the date of delivery. The prospective user must determine the suitability of our materials before adopting them on a commercial scale. Suggested uses of our products are not recommendations to use our products in violation of any patent or as a license under any patent of Rockland Immunochemicals, Inc. If you require a commercial license to use this material and do not have one, then return this material, unopened to: Rockland Inc., P.O. BOX 5199, Limerick, Pennsylvania, USA.