

Datasheet for KOA0663

Human Kininogen-1 - KNG1 ELISA Kit**Overview**

Description:	Human Kininogen-1/KNG1 AccuSignal ELISA Kit - KOA0663
Item No.:	KOA0663
Size:	1 Kit
Applications:	ELISA
Reactivity:	Human
Range:	0.78 ng/ml - 50 ng/ml

Product Details

Background:	Kininogen-1 (KNG1), also known as alpha-2-thiol proteinase inhibitor, Williams-Fitzgerald-Flaujeac factor or the HMWK-kallikrein factor, is a protein that in humans is encoded by the KNG1 gene. It is mapped to 3q27.3. The KNG1 gene uses alternative splicing to generate two different proteins – high – molecular - weight kininogen (HMWK) and low - molecular- weight kininogen (LMWK). HMWK is essential for blood coagulation and assembly of the kallikrein-kinin system. Also, bradykinin, a peptide causing numerous physiological effects, is released from HMWK. In contrast to HMWK, LMWK is not involved in blood coagulation. In addition to that, KNG1 is a constituent of the blood coagulation system as well as the kinin-kallikrein system.
Synonyms:	Alpha-2-thiol proteinase inhibitor, BDK, BK, BK, included, bradykinin, bradykinin, included, Fitzgerald factor, Fitzgerald factor, included, Flaujeac factor, included, High molecular weight kininogen, High molecular weight kininogen, included, HMWK, HMWK, included, Ile-Ser-Bradykinin, Kallidin I, Kallidin II, kininogen 1, KNG, KNG1, KNG1_HUMAN, LMWK, included, Low molecular weight growth-promoting factor, Low molecular weight kininogen, included, Williams factor, included, Williams-Fitzgerald-Flaujeac factor
Detection Kit Type:	ELISA Kit
Detection Range:	0.78 ng/ml - 50 ng/ml
Sensitivity:	<20 pg/ml

Target Details

Gene Name:	KNG1
Reactivity:	Human

Immunogen:	Expression system for standard: NSO; Immunogen sequence: Q19-S644
Purity/Specificity:	Natural and recombinant human Kininogen-1. There is no detectable cross-reactivity with other relevant proteins.
Relevant Links:	<ul style="list-style-type: none">• UniProtKB - P01042• NCBI - NP_000884.1• GenelD - 3827• KOA0663 Protocol

Application Details

Tested Applications:	ELISA
Application Note:	Useful in Sandwich ELISA for Quantitative Detection of Antigen. Aliquot 0.1ml per well of the 50ng/ml, 25ng/ml, 12.5ng/ml, 6.25ng/ml, 3.12ng/ml, 1.56ng/ml, 0.78ng/ml human Kininogen-1 standard solutions into the precoated 96-well plate. Add 0.1ml of the sample diluent buffer into the control well (Zero well). Add 0.1ml of each properly diluted sample of human cell culture supernates, serum or plasma(heparin, EDTA) to each empty well. We recommend that each human Kininogen-1 standard solution and each sample is measured in duplicate.
Assay Dilutions:	All assays should be optimized by the user. Recommended dilutions (if any) may be listed below.

Formulation

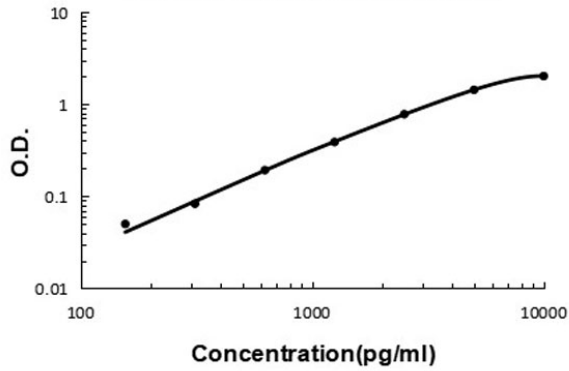
Anticoagulant:	Heparin Sodium
-----------------------	----------------

Shipping & Handling

Shipping Condition:	Wet Ice
Storage Condition:	Store vials at 4°C prior to opening. Centrifuge product if not completely clear after standing at room temperature. This product is stable for 6 months at 4°C as an undiluted liquid. Dilute only prior to immediate use. For extended storage freeze at -20°C or below for 12 months. Avoid cycles of freezing and thawing.
Expiration:	See kit insert for complete instructions.

Images

Human KNG1 ELISA Kit



ELISA

Human Kininogen-1/KNG1 ELISA Kit standard curve.

Disclaimer

This product is for research use only and is not intended for therapeutic or diagnostic applications. Please contact a technical service representative for more information. All products of animal origin manufactured by Rockland Immunochemicals are derived from starting materials of North American origin. Collection was performed in United States Department of Agriculture (USDA) inspected facilities and all materials have been inspected and certified to be free of disease and suitable for exportation. All properties listed are typical characteristics and are not specifications. All suggestions and data are offered in good faith but without guarantee as conditions and methods of use of our products are beyond our control. All claims must be made within 30 days following the date of delivery. The prospective user must determine the suitability of our materials before adopting them on a commercial scale. Suggested uses of our products are not recommendations to use our products in violation of any patent or as a license under any patent of Rockland Immunochemicals, Inc. If you require a commercial license to use this material and do not have one, then return this material, unopened to: Rockland Inc., P.O. BOX 5199, Limerick, Pennsylvania, USA.