

Datasheet for KOA0611

Mouse TGF beta 2 ELISA Kit**Overview**

Description:	Mouse TGF-beta 2 AccuSignal ELISA Kit - KOA0611
Item No.:	KOA0611
Size:	1 Kit
Applications:	ELISA
Reactivity:	Mouse
Range:	31.2 pg/ml - 2000 pg/ml

Product Details

Background:	Transforming growth factor-beta 2(TGF-beta 2) is a secreted protein known as a cytokine that performs many cellular functions and has a vital role during embryonic development. This gene is mapped to 1q41. It is an extracellular glycosylated protein. It is known to suppress the effects of interleukin dependent T-cell tumors. TGF-beta 2 is present at elevated levels in the aqueous humor of patients with primary open angle glaucoma(POAG). Studies have shown that TGF-beta 2 influences cultured trabecular meshwork cells, and it reduced outflow facility when perfused into cultured human anterior segments. In POAG, elevated expression of Gremlin by TM cells inhibited BMP4 antagonism of TGF-beta 2 and led to increased extracellular matrix deposition and elevated IOP.
Synonyms:	BSC 1 cell growth inhibitor, BSC-1 cell growth inhibitor, Cetermin, G-TSF, Glioblastoma derived T cell suppressor factor, Glioblastoma-derived T-cell suppressor factor, Polyergin, TGF beta2, TGF-beta-2, TGFB2, TGFB2_HUMAN, Transforming growth factor beta-2, Transforming growth factor, beta 2
Detection Kit Type:	ELISA Kit
Detection Range:	31.2 pg/ml - 2000 pg/ml
Sensitivity:	<10 pg/ml

Target Details

Gene Name:	TGFB2
Reactivity:	Mouse

Immunogen:	Expression system for standard: NSO; Immunogen sequence: A303-S414
Purity/Specificity:	Natural and recombinant mouse TGF-beta 2. There is no detectable cross-reactivity with other relevant proteins.
Relevant Links:	<ul style="list-style-type: none">• UniProtKB - P27090• NCBI - NP_033393.2• GenelD - 21808• KOA0611 Protocol

Application Details

Tested Applications:	ELISA
Application Note:	Useful in Sandwich ELISA for Quantitative Detection of Antigen. Aliquot 0.1ml per well of the 2000pg/ml,1000pg/ml, 500pg/ml, 250pg/ml, 125pg/ml, 62.5pg/ml, 31.2pg/ml mouse TGF-beta 2 standard solutions into the precoated 96-well plate. Add 0.1ml of the sample diluent buffer into the control well (Zero well). Add 0.1ml of each properly diluted sample of activated mouse cell culture supernates, serum or plasma(heparin, EDTA, citrate) to each empty well. It is recommended that each mouse TGF-beta 2 standard solution and each sample be measured in duplicate.
Assay Dilutions:	All assays should be optimized by the user. Recommended dilutions (if any) may be listed below.

Formulation

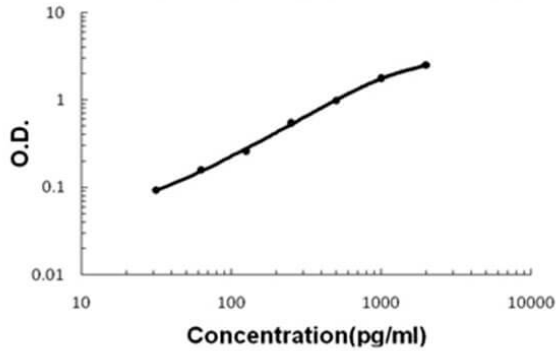
Anticoagulant:	Heparin Sodium
-----------------------	----------------

Shipping & Handling

Shipping Condition:	Wet Ice
Storage Condition:	Store vials at 4°C prior to opening. Centrifuge product if not completely clear after standing at room temperature. This product is stable for 6 months at 4°C as an undiluted liquid. Dilute only prior to immediate use. For extended storage freeze at -20°C or below for 12 months. Avoid cycles of freezing and thawing.
Expiration:	See kit insert for complete instructions.

Images

Mouse TGF-beta 2 ELISA Kit



ELISA

Mouse TGF-beta 2 AccuSignal ELISA Kit standard curve.

Assay Range: 31.2pg/ml-2000pg/ml. Sensitivity: <10pg/ml.

Disclaimer

This product is for research use only and is not intended for therapeutic or diagnostic applications. Please contact a technical service representative for more information. All products of animal origin manufactured by Rockland Immunochemicals are derived from starting materials of North American origin. Collection was performed in United States Department of Agriculture (USDA) inspected facilities and all materials have been inspected and certified to be free of disease and suitable for exportation. All properties listed are typical characteristics and are not specifications. All suggestions and data are offered in good faith but without guarantee as conditions and methods of use of our products are beyond our control. All claims must be made within 30 days following the date of delivery. The prospective user must determine the suitability of our materials before adopting them on a commercial scale. Suggested uses of our products are not recommendations to use our products in violation of any patent or as a license under any patent of Rockland Immunochemicals, Inc. If you require a commercial license to use this material and do not have one, then return this material, unopened to: Rockland Inc., P.O. BOX 5199, Limerick, Pennsylvania, USA.