

## Datasheet for KOA0604

**Mouse TEK - TIE2 ELISA Kit****Overview**

<b>Description:</b>	Mouse TEK/TIE2 AccuSignal ELISA Kit - KOA0604
<b>Item No.:</b>	KOA0604
<b>Size:</b>	1 Kit
<b>Applications:</b>	ELISA
<b>Reactivity:</b>	Mouse
<b>Range:</b>	125 pg/ml - 8000 pg/ml

**Product Details**

<b>Background:</b>	Angiopoietin-1 receptor, also called TEK or TIE2 is a protein that in humans is encoded by the TEK gene. This gene is mapped to 9p21.2. The TEK receptor tyrosine kinase is expressed almost exclusively in endothelial cells in mice, rats, and humans. This receptor possesses a unique extracellular domain containing 2 immunoglobulin-like loops separated by 3 epidermal growth factor-like repeats that are connected to 3 fibronectin type III-like repeats. The ligand for the receptor is angiopoietin-1. Defects in TEK are associated with inherited venous malformations, the TEK signaling pathway appears to be critical for endothelial cell-smooth muscle cell communication in venous morphogenesis. TEK is closely related to the TIE receptor tyrosine kinase.
<b>Synonyms:</b>	Angiopoietin-1 receptor, CD202b, CD202b antigen, EC 2.7.10.1, hTIE2, p140 TEK, soluble TIE2, variant 1, soluble TIE2 variant 2, Tek, TEK tyrosine kinase, endothelial, TIE 2, TIE2_HUMAN, Tunica interna endothelial cell kinase, Tyrosine-protein kinase receptor TEK, Tyrosine-protein kinase receptor TIE 2, Tyrosine-protein kinase receptor TIE-2, venous malformations, multiple cutaneous and mucosal, VMCM, VMCM1
<b>Detection Kit Type:</b>	ELISA Kit
<b>Detection Range:</b>	125 pg/ml - 8000 pg/ml
<b>Sensitivity:</b>	<10 pg/ml

**Target Details**

<b>Gene Name:</b>	TEK
<b>Reactivity:</b>	Mouse

<b>Immunogen:</b>	Expression system for standard: NSO; Immunogen sequence: A23-K744
<b>Purity/Specificity:</b>	Natural and recombinant mouse TEK. There is no detectable cross-reactivity with other relevant proteins.
<b>Relevant Links:</b>	<ul style="list-style-type: none"><li>• <a href="#">UniProtKB - Q02858</a></li><li>• <a href="#">NCBI - NP_001277478.1</a></li><li>• <a href="#">GenID - 21687</a></li><li>• <a href="#">KOA0604 Protocol</a></li></ul>

## Application Details

<b>Tested Applications:</b>	ELISA
<b>Application Note:</b>	Useful in Sandwich ELISA for Quantitative Detection of Antigen. Aliquot 0.1ml per well of the 8000pg/ml, 4000pg/ml, 2000pg/ml, 1000pg/ml, 500pg/ml, 250pg/ml, 125pg/ml mouse TEK standard solutions into the precoated 96-well plate. Add 0.1ml of the sample diluent buffer into the control well (Zero well). Add 0.1ml of each properly diluted sample of mouse cell culture supernates, serum, tissue homogenates or plasma (heparin, EDTA) to each empty well. It is recommended that each mouse TEK standard solution and each sample be measured in duplicate.
<b>Assay Dilutions:</b>	All assays should be optimized by the user. Recommended dilutions (if any) may be listed below.

## Formulation

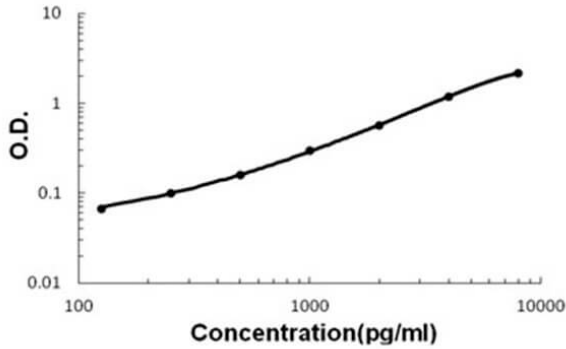
<b>Anticoagulant:</b>	Heparin Sodium
-----------------------	----------------

## Shipping & Handling

<b>Shipping Condition:</b>	Wet Ice
<b>Storage Condition:</b>	Store vials at 4°C prior to opening. Centrifuge product if not completely clear after standing at room temperature. This product is stable for 6 months at 4°C as an undiluted liquid. Dilute only prior to immediate use. For extended storage freeze at -20°C or below for 12 months. Avoid cycles of freezing and thawing.
<b>Expiration:</b>	See kit insert for complete instructions.

## Images

### Mouse TEK/TIE2 ELISA Kit



#### ELISA

Mouse TEK/TIE2 AccuSignal ELISA Kit standard curve. Assay Range: 125pg/ml-8000pg/ml. Sensitivity: <10pg/ml.

### Disclaimer

This product is for research use only and is not intended for therapeutic or diagnostic applications. Please contact a technical service representative for more information. All products of animal origin manufactured by Rockland Immunochemicals are derived from starting materials of North American origin. Collection was performed in United States Department of Agriculture (USDA) inspected facilities and all materials have been inspected and certified to be free of disease and suitable for exportation. All properties listed are typical characteristics and are not specifications. All suggestions and data are offered in good faith but without guarantee as conditions and methods of use of our products are beyond our control. All claims must be made within 30 days following the date of delivery. The prospective user must determine the suitability of our materials before adopting them on a commercial scale. Suggested uses of our products are not recommendations to use our products in violation of any patent or as a license under any patent of Rockland Immunochemicals, Inc. If you require a commercial license to use this material and do not have one, then return this material, unopened to: Rockland Inc., P.O. BOX 5199, Limerick, Pennsylvania, USA.