

Datasheet for KOA0575

Human ICAM-3 ELISA Kit**Overview**

Description:	Human ICAM-3 AccuSignal ELISA Kit - KOA0575
Item No.:	KOA0575
Size:	1 Kit
Applications:	ELISA
Reactivity:	Human
Range:	156 pg/ml - 10000 pg/ml

Product Details

Background:	Intercellular adhesion molecule 3(ICAM3) also known as CD50(Cluster of Differentiation 50), is a human gene. The protein encoded by this gene is a member of the intercellular adhesion molecule(ICAM) family. ICAM3 is closely related to ICAM1, consists of 5 immunoglobulin domains, and binds LFA1 through its 2 N-terminal domains. This protein is constitutively and abundantly expressed by all leucocytes and may be the most important ligand for LFA-1 in the initiation of the immune response. It functions not only as an adhesion molecule, but also as a potent signalling molecule. ICAM3 has been shown to interact with EZR and Moesin.
Synonyms:	CD50, CD50 antigen, CDW50, ICAM 3, ICAM R, ICAMR, Intercellular adhesion molecule 3, Intercellular adhesion molecule 3 precursor
Detection Kit Type:	ELISA Kit
Detection Range:	156 pg/ml - 10000 pg/ml
Sensitivity:	<10 pg/ml

Target Details

Gene Name:	ICAM3
Reactivity:	Human
Immunogen:	Expression system for standard: NSO; Immunogen sequence: Q30-H485, homodimer
Purity/Specificity:	Natural and recombinant human ICAM-3. There is no detectable cross-reactivity with other relevant proteins.

Relevant Links:	<ul style="list-style-type: none">• UniProtKB - P32942• NCBI - NP_002153.2• GeneID - 3385• KOA0575 Protocol
------------------------	--

Application Details

Tested Applications:	ELISA
Application Note:	Useful in Sandwich ELISA for Quantitative Detection of Antigen. Aliquot 0.1ml per well of the 10000pg/ml, 5000pg/ml, 2500pg/ml, 1250pg/ml, 625pg/ml, 312pg/ml, 156pg/ml human ICAM-3 standard solutions into the precoated 96-well plate. Add 0.1ml of the sample diluent buffer into the control well (Zero well). Add 0.1ml of each properly diluted sample of human cell culture supernates, serum or plasma(heparin, EDTA) to each empty well. It is recommended that each human ICAM-3 standard solution and each sample be measured in duplicate.
Assay Dilutions:	All assays should be optimized by the user. Recommended dilutions (if any) may be listed below.

Formulation

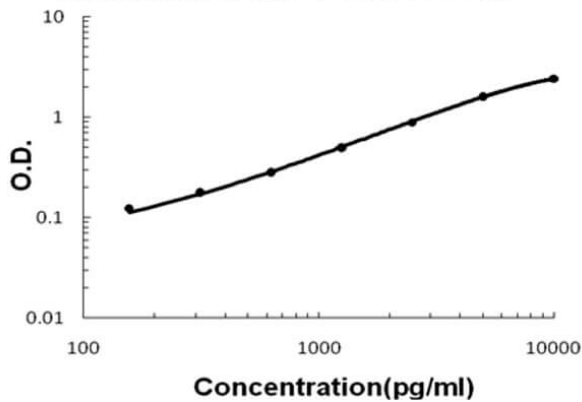
Anticoagulant:	Heparin Sodium
-----------------------	----------------

Shipping & Handling

Shipping Condition:	Wet Ice
Storage Condition:	Store vials at 4°C prior to opening. Centrifuge product if not completely clear after standing at room temperature. This product is stable for 6 months at 4°C as an undiluted liquid. Dilute only prior to immediate use. For extended storage freeze at -20°C or below for 12 months. Avoid cycles of freezing and thawing.
Expiration:	See kit insert for complete instructions.

Images

Human ICAM-3 ELISA Kit



ELISA

Human ICAM-3 AccuSignal ELISA Kit standard curve. Assay Range: 156pg/ml-10000pg/ml. Sensitivity: <10pg/ml.

Disclaimer

This product is for research use only and is not intended for therapeutic or diagnostic applications. Please contact a technical service representative for more information. All products of animal origin manufactured by Rockland Immunochemicals are derived from starting materials of North American origin. Collection was performed in United States Department of Agriculture (USDA) inspected facilities and all materials have been inspected and certified to be free of disease and suitable for exportation. All properties listed are typical characteristics and are not specifications. All suggestions and data are offered in good faith but without guarantee as conditions and methods of use of our products are beyond our control. All claims must be made within 30 days following the date of delivery. The prospective user must determine the suitability of our materials before adopting them on a commercial scale. Suggested uses of our products are not recommendations to use our products in violation of any patent or as a license under any patent of Rockland Immunochemicals, Inc. If you require a commercial license to use this material and do not have one, then return this material, unopened to: Rockland Inc., P.O. BOX 5199, Limerick, Pennsylvania, USA.