

Datasheet for KOA0572

Rat sL-Selectin ELISA Kit**Overview**

Description:	Rat sL-Selectin AccuSignal ELISA Kit - KOA0572
Item No.:	KOA0572
Size:	1 Kit
Applications:	ELISA
Reactivity:	Rat
Range:	625 pg/ml - 40000 pg/ml

Product Details

Background:	L-selectin, also known as CD62L, is a cell adhesion molecule found on leukocytes. It belongs to the selectin family of proteins, which recognize sialylated carbohydrate groups. It is cleaved by ADAM17.SELL(L-selectin) is a cell surface component that is a member of a family of adhesion/homing receptors which play important roles in leukocyte-endothelial cell interactions. The molecule is composed of multiple domains: one homologous to lectins, one to epidermal growth factor, and two to the consensus repeat units found in C3/C4 binding proteins.1 L-selectin acts as a "homing receptor" for leukocytes to enter secondary lymphoid tissues via high endothelial venules. Ligands present on endothelial cells will bind to leukocyte expressing L-selectin, slowing leukocyte trafficking through the blood, and facilitating entry into a secondary lymphoid organ at that point2.
Synonyms:	A.11, AI528707, CD62 antigen ligand, CD62 antigen-like family member L, gp90 MEL, hLHRc, IgA nephropathy, susceptibility to, includedL Selectin, LAM1, LECAM1, Leu8, Leukocyte adhesion molecule 1, Leukocyte surface antigen Leu8, Leukocyte-endothelial cell adhesion molecule 1, LNHR, LSEL, Ly-22, Ly-m22, LYAM1, Lymph node homing receptor, Lymphocyte adhesion molecule 1, Lymphocyte antigen 22, Lymphocyte surface MEL-14 antigen, PLNHR, Selectin L, Selectin, lymphocyte, SELL, TQ1
Detection Kit Type:	ELISA Kit
Detection Range:	625 pg/ml - 40000 pg/ml
Sensitivity:	<20 pg/ml

Target Details**Gene Name:** SELL

Reactivity:	Rat
Immunogen:	Expression system for standard: NSO; Immunogen sequence: W39-N332
Purity/Specificity:	Natural and recombinant rat sL-Selectin. There is no detectable cross-reactivity with other relevant proteins.
Relevant Links:	<ul style="list-style-type: none">• UniProtKB - Q63762• NCBI - NP_062050.3• GeneID - 29259• KOA0572 Protocol

Application Details

Tested Applications:	ELISA
Application Note:	Useful in Sandwich ELISA for Quantitative Detection of Antigen. Aliquot 0.1ml per well of the 40000pg/ml, 20000pg/ml, 10000pg/ml, 5000pg/ml, 2500pg/ml, 1250pg/ml, 625pg/ml rat L-Selectin standard solutions into the precoated 96-well plate. Add 0.1ml of the sample diluent buffer into the control well (Zero well). Add 0.1ml of each properly diluted sample of rat cell culture supernates, serum or plasma (heparin, EDTA) to each empty well. It is recommended that each rat L-Selectin standard solution and each sample be measured in duplicate.
Assay Dilutions:	All assays should be optimized by the user. Recommended dilutions (if any) may be listed below.

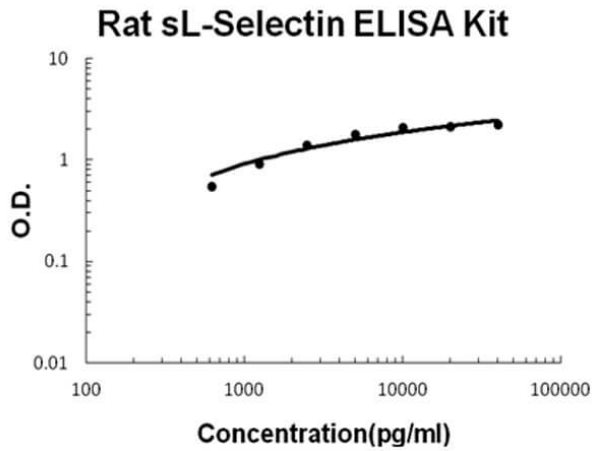
Formulation

Anticoagulant:	Heparin Sodium
-----------------------	----------------

Shipping & Handling

Shipping Condition:	Wet Ice
Storage Condition:	Store vials at 4°C prior to opening. Centrifuge product if not completely clear after standing at room temperature. This product is stable for 6 months at 4°C as an undiluted liquid. Dilute only prior to immediate use. For extended storage freeze at -20°C or below for 12 months. Avoid cycles of freezing and thawing.
Expiration:	See kit insert for complete instructions.

Images



ELISA

Rat sL-Selectin AccuSignal ELISA Kit standard curve. Assay Range: 625pg/ml-40000pg/ml. Sensitivity: <20pg/ml.

Disclaimer

This product is for research use only and is not intended for therapeutic or diagnostic applications. Please contact a technical service representative for more information. All products of animal origin manufactured by Rockland Immunochemicals are derived from starting materials of North American origin. Collection was performed in United States Department of Agriculture (USDA) inspected facilities and all materials have been inspected and certified to be free of disease and suitable for exportation. All properties listed are typical characteristics and are not specifications. All suggestions and data are offered in good faith but without guarantee as conditions and methods of use of our products are beyond our control. All claims must be made within 30 days following the date of delivery. The prospective user must determine the suitability of our materials before adopting them on a commercial scale. Suggested uses of our products are not recommendations to use our products in violation of any patent or as a license under any patent of Rockland Immunochemicals, Inc. If you require a commercial license to use this material and do not have one, then return this material, unopened to: Rockland Inc., P.O. BOX 5199, Limerick, Pennsylvania, USA.