

Datasheet for KOA0568

Human IL-22 ELISA Kit**Overview**

Description:	Human IL-22 AccuSignal ELISA Kit - KOA0568
Item No.:	KOA0568
Size:	1 Kit
Applications:	ELISA
Reactivity:	Human
Range:	15.6 pg/ml - 1000 pg/ml

Product Details

Background:	Interleukin-22(IL-22), also known as ILTIF, is protein that in humans is encoded by the IL22 gene. IL-22 a member of a group of cytokines called the IL-10 family or IL-10 superfamily a class of potent mediators of cellular inflammatory responses. Using FISH, the IL22 gene is mapped to chromosome 12q15, close to the IFNG and the herpesvirus saimiri-induced AK155 genes. IL-22 can contribute to immune disease through the stimulation of inflammatory responses, S100s and defensins. IL-22 also promotes hepatocyte survival in the liver and epithelial cells in the lung and gut similar to IL-10. In some contexts, the pro-inflammatory versus tissue-protective functions of IL-22 are regulated by the often co-expressed cytokine IL-17A.
Synonyms:	Cytokine Zcyto18, IL 21, IL 22, IL D110, IL-10-related T-cell-derived-inducible factor, IL-22, IL-TIF, IL22, IL22_HUMAN, ILTIF, Interleukin 22, Interleukin-22, TIFa, TIFIL 23, zcyto18
Detection Kit Type:	ELISA Kit
Detection Range:	15.6 pg/ml - 1000 pg/ml
Sensitivity:	<10 pg/ml

Target Details

Gene Name:	IL22
Reactivity:	Human
Immunogen:	Expression system for standard: E.coli; Immunogen sequence: A34-I179
Purity/Specificity:	Natural and recombinant human IL-22. There is no detectable cross-reactivity with other relevant proteins.

Relevant Links:	<ul style="list-style-type: none">• UniProtKB - Q9GZX6• NCBI - NP_065386.1• GeneID - 50616• KOA0568 Protocol
------------------------	---

Application Details

Tested Applications:	ELISA
Application Note:	Useful in Sandwich ELISA for Quantitative Detection of Antigen. Aliquot 0.1ml per well of the 1000pg/ml, 500pg/ml, 250pg/ml, 125pg/ml, 62.5pg/ml, 31.2pg/ml, 15.6pg/ml human IL-22 standard solutions into the precoated 96-well plate. Add 0.1ml of the sample diluent buffer into the control well (Zero well). Add 0.1ml of each properly diluted sample of human cell culture supernates, serum or plasma(heparin, EDTA) to each empty well. It is recommended that each human IL-22 standard solution and each sample be measured in duplicate.
Assay Dilutions:	All assays should be optimized by the user. Recommended dilutions (if any) may be listed below.
Other:	DOE: 2-8° C - 12/19/19 -20° C - 06/18/20

Formulation

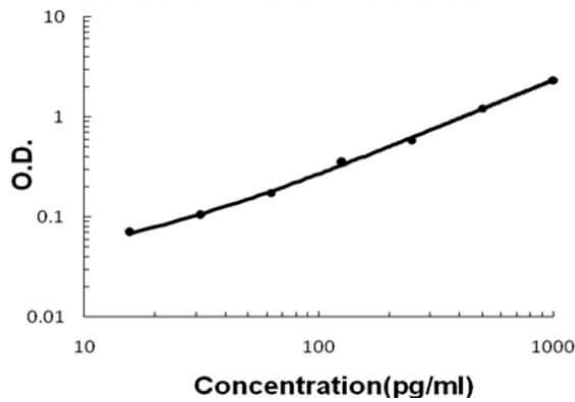
Concentration:	1 Kit
Anticoagulant:	Heparin Sodium

Shipping & Handling

Shipping Condition:	Wet Ice
Storage Condition:	Store vials at 4°C prior to opening. Centrifuge product if not completely clear after standing at room temperature. This product is stable for 6 months at 4°C as an undiluted liquid. Dilute only prior to immediate use. For extended storage freeze at -20°C or below for 12 months. Avoid cycles of freezing and thawing.
Expiration:	See kit insert for complete instructions.

Images

Human IL-22 ELISA Kit



ELISA

Human IL-22 AccuSignal ELISA Kit standard curve. Assay Range: 15.6pg/ml-1000pg/ml. Sensitivity: <10pg/ml.

Disclaimer

This product is for research use only and is not intended for therapeutic or diagnostic applications. Please contact a technical service representative for more information. All products of animal origin manufactured by Rockland Immunochemicals are derived from starting materials of North American origin. Collection was performed in United States Department of Agriculture (USDA) inspected facilities and all materials have been inspected and certified to be free of disease and suitable for exportation. All properties listed are typical characteristics and are not specifications. All suggestions and data are offered in good faith but without guarantee as conditions and methods of use of our products are beyond our control. All claims must be made within 30 days following the date of delivery. The prospective user must determine the suitability of our materials before adopting them on a commercial scale. Suggested uses of our products are not recommendations to use our products in violation of any patent or as a license under any patent of Rockland Immunochemicals, Inc. If you require a commercial license to use this material and do not have one, then return this material, unopened to: Rockland Inc., P.O. BOX 5199, Limerick, Pennsylvania, USA.