

## Datasheet for KOA0548

**Human Aggrecan ELISA Kit****Overview**

<b>Description:</b>	Human Aggrecan AccuSignal ELISA Kit - KOA0548
<b>Item No.:</b>	KOA0548
<b>Size:</b>	1 Kit
<b>Applications:</b>	ELISA
<b>Reactivity:</b>	Human
<b>Range:</b>	1.56 ng/ml - 100 ng/ml

**Product Details**

<b>Background:</b>	Aggrecan, also known as cartilage-specific proteoglycan core protein (CSPCP) or chondroitin sulfate proteoglycan 1, is a protein that in humans is encoded by the ACAN gene. It is a critical component for cartilage structure and the function of joints. Aggrecan provides intervertebral disc and cartilage with the ability to resist compressive loads. The localized high concentrations of aggrecan provide the osmotic properties necessary for normal tissue function with the GAGs producing the swelling pressure that counters compressive loads on the tissue. This functional ability is dependent on a high GAG/aggrecan concentration being present in the tissue extracellular matrix. Also, Aggrecan plays an important role in the organization of the extracellular spaces between neurons in the brain.
<b>Synonyms:</b>	ACAN, AGC1, AGCAN, Aggrecan 1, Aggrecan core protein, Aggrecan proteoglycan, Aggrecan structural proteoglycan of cartilage, Aggrecan1, ATEGQV, Cartilage specific proteoglycan core protein, Chondroitin sulfate proteoglycan 1, Chondroitin sulfate proteoglycan 1 large aggregating proteoglycan antigen identified by monoclonal antibody A0122, Chondroitin sulfate proteoglycan core protein 1, CSPG1, CSPGCP, JSCATE, Large aggregating proteoglycan, mcspg, mgsk16, MSK16, SEDK
<b>Detection Kit Type:</b>	ELISA Kit
<b>Detection Range:</b>	1.56 ng/ml - 100 ng/ml
<b>Sensitivity:</b>	<50 pg/ml

**Target Details**

<b>Gene Name:</b>	ACAN
-------------------	------

<b>Reactivity:</b>	Human
<b>Immunogen:</b>	Expression system for standard: NSO; Immunogen sequence: V20-G675
<b>Purity/Specificity:</b>	Natural and recombinant human Aggrecan. There is no detectable cross-reactivity with other relevant proteins.
<b>Relevant Links:</b>	<ul style="list-style-type: none"><li>• <a href="#">UniProtKB - P16112</a></li><li>• <a href="#">GenelD - 176</a></li><li>• <a href="#">KOA0548 Protocol</a></li></ul>

## Application Details

<b>Tested Applications:</b>	ELISA
<b>Application Note:</b>	Useful in Sandwich ELISA for Quantitative Detection of Antigen. Aliquot 0.1ml per well of the 100ng/ml, 50ng/ml, 25ng/ml, 12.5ng/ml, 6.25ng/ml, 3.12ng/ml, 1.56ng/ml human Aggrecan standard solutions into the precoated 96-well plate. Add 0.1ml of the sample diluent buffer into the control well (Zero well). Add 0.1ml of each properly diluted sample of human cell culture supernates, serum or urine to each empty well. It is recommended that each human Aggrecan standard solution and each sample be measured in duplicate.
<b>Assay Dilutions:</b>	All assays should be optimized by the user. Recommended dilutions (if any) may be listed below.
<b>Other:</b>	DOE: @4°C 06/30/2023 @-20°C 12/30/2023

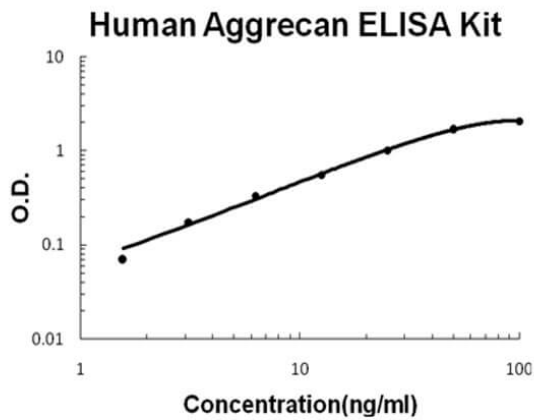
## Formulation

<b>Concentration:</b>	1 Kit
-----------------------	-------

## Shipping & Handling

<b>Shipping Condition:</b>	Wet Ice
<b>Storage Condition:</b>	Store vials at 4°C prior to opening. Centrifuge product if not completely clear after standing at room temperature. This product is stable for 6 months at 4°C as an undiluted liquid. Dilute only prior to immediate use. For extended storage freeze at -20°C or below for 12 months. Avoid cycles of freezing and thawing.
<b>Expiration:</b>	See kit insert for complete instructions.

## Images



### ELISA

Human Aggrecan AccuSignal ELISA Kit standard curve. Assay Range: 1.56ng/ml-100ng/ml. Sensitivity: <50pg/ml.

## Disclaimer

This product is for research use only and is not intended for therapeutic or diagnostic applications. Please contact a technical service representative for more information. All products of animal origin manufactured by Rockland Immunochemicals are derived from starting materials of North American origin. Collection was performed in United States Department of Agriculture (USDA) inspected facilities and all materials have been inspected and certified to be free of disease and suitable for exportation. All properties listed are typical characteristics and are not specifications. All suggestions and data are offered in good faith but without guarantee as conditions and methods of use of our products are beyond our control. All claims must be made within 30 days following the date of delivery. The prospective user must determine the suitability of our materials before adopting them on a commercial scale. Suggested uses of our products are not recommendations to use our products in violation of any patent or as a license under any patent of Rockland Immunochemicals, Inc. If you require a commercial license to use this material and do not have one, then return this material, unopened to: Rockland Inc., P.O. BOX 5199, Limerick, Pennsylvania, USA.