

**Datasheet for KOA0540****Human THBS1 - TSP1 ELISA Kit****Overview**

<b>Description:</b>	Human THBS1/TSP1 AccuSignal ELISA Kit - KOA0540
<b>Item No.:</b>	KOA0540
<b>Size:</b>	1 Kit
<b>Applications:</b>	ELISA
<b>Reactivity:</b>	Human
<b>Range:</b>	1.56 ng/ml - 100 ng/ml

**Product Details**

<b>Background:</b>	Thrombospondin 1, also known as THBS1, is a protein that in humans is encoded by the THBS1 gene. Thrombospondin 1 is a subunit of a disulfide-linked homotrimeric protein. This protein is an adhesive glycoprotein that mediates cell-to-cell and cell-to-matrix interactions. By in situ hybridization, the THBS1 gene was mapped to human 15q15 and the cognate gene to mouse chromosome 2(region F) and was localized to 15q11-qter by Southern analysis of human-rodent somatic cell hybrids. Thrombospondin I is a multimodular secreted protein that associates with the extracellular matrix and possesses a variety of biologic functions, including a potent antiangiogenic activity. Other thrombospondin genes include thrombospondins II, III, and IV.
<b>Synonyms:</b>	THBS 1, THBS, THBS1, Thrombospondin 1, Thrombospondin-1, Tsp 1, TSP, Tsp1, TSP1_HUMAN
<b>Detection Kit Type:</b>	ELISA Kit
<b>Detection Range:</b>	1.56 ng/ml - 100 ng/ml
<b>Sensitivity:</b>	<50 pg/ml

**Target Details**

<b>Gene Name:</b>	THBS1
<b>Reactivity:</b>	Human
<b>Immunogen:</b>	Expression system for standard: NSO; Immunogen sequence: N19-P1170
<b>Purity/Specificity:</b>	Natural and recombinant human THBS1. There is no detectable cross-reactivity with other relevant proteins.

<b>Relevant Links:</b>	<ul style="list-style-type: none"><li>• <a href="#">UniProtKB - P07996</a></li><li>• <a href="#">NCBI - NP_003237.2</a></li><li>• <a href="#">GeneID - 7057</a></li><li>• <a href="#">KOA0540 Protocol</a></li></ul>
------------------------	--

## Application Details

<b>Tested Applications:</b>	ELISA
<b>Application Note:</b>	Useful in Sandwich ELISA for Quantitative Detection of Antigen. Aliquot 0.1ml per well of the 100ng/ml, 50ng/ml, 25ng/ml, 1.25ng/ml, 6.25ng/ml, 3.12ng/ml, 1.56ng/ml human THBS1 standard solutions into the precoated 96-well plate. Add 0.1ml of the sample diluent buffer into the control well (Zero well). Add 0.1ml of each properly diluted sample of human cell culture supernates, serum or plasma(heparin, EDTA) to each empty well. We recommend that each human THBS1 standard solution and each sample is measured in duplicate.
<b>Assay Dilutions:</b>	All assays should be optimized by the user. Recommended dilutions (if any) may be listed below.
<b>ELISA:</b>	1.56ng/ml-100ng/ml
<b>Other:</b>	DOE: 2-8° C - 03/18/19 -20° C - 09/06/19

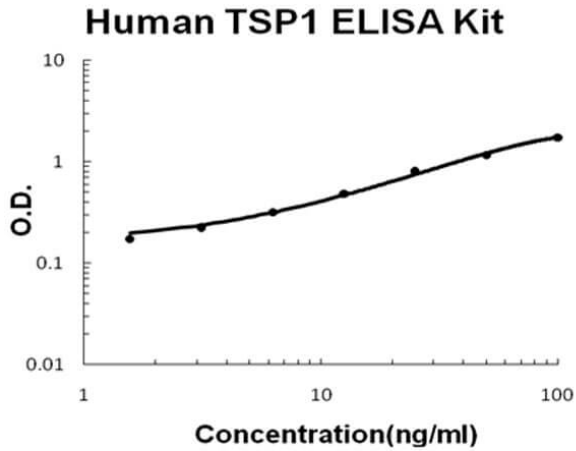
## Formulation

<b>Concentration:</b>	1 Kit
<b>Anticoagulant:</b>	Heparin Sodium

## Shipping & Handling

<b>Shipping Condition:</b>	Wet Ice
<b>Storage Condition:</b>	Store vials at 4°C prior to opening. Centrifuge product if not completely clear after standing at room temperature. This product is stable for 6 months at 4°C as an undiluted liquid. Dilute only prior to immediate use. For extended storage freeze at -20°C or below for 12 months. Avoid cycles of freezing and thawing.
<b>Expiration:</b>	See kit insert for complete instructions.

## Images



### ELISA

Human THBS1/TSP1 AccuSignal ELISA Kit standard curve.  
Assay Range: 1.56ng/ml-100ng/ml. Sensitivity: <50pg/ml.

## Disclaimer

This product is for research use only and is not intended for therapeutic or diagnostic applications. Please contact a technical service representative for more information. All products of animal origin manufactured by Rockland Immunochemicals are derived from starting materials of North American origin. Collection was performed in United States Department of Agriculture (USDA) inspected facilities and all materials have been inspected and certified to be free of disease and suitable for exportation. All properties listed are typical characteristics and are not specifications. All suggestions and data are offered in good faith but without guarantee as conditions and methods of use of our products are beyond our control. All claims must be made within 30 days following the date of delivery. The prospective user must determine the suitability of our materials before adopting them on a commercial scale. Suggested uses of our products are not recommendations to use our products in violation of any patent or as a license under any patent of Rockland Immunochemicals, Inc. If you require a commercial license to use this material and do not have one, then return this material, unopened to: Rockland Inc., P.O. BOX 5199, Limerick, Pennsylvania, USA.