

Datasheet for KOA0538

Human PLAT - TPA ELISA Kit**Overview**

Description:	Human PLAT/TPA AccuSignal ELISA Kit - KOA0538
Item No.:	KOA0538
Size:	1 Kit
Applications:	ELISA
Reactivity:	Human
Range:	31.2 pg/ml - 2000 pg/ml

Product Details

Background:	Plasminogen activator, tissue, also called PLAT or TPA is a serine protease. This gene encodes tissue-type plasminogen activator, a secreted serine protease which converts the proenzyme plasminogen to plasmin, a fibrinolytic enzyme. Tissue-type plasminogen activator is synthesized as a single chain which is cleaved by plasmin to a two chain disulfide linked protein. This gene was mapped to 8p11.21. This enzyme plays a role in cell migration and tissue remodeling. Increased enzymatic activity causes hyperfibrinolysis, which manifests as excessive bleeding; decreased activity leads to hypofibrinolysis which can result in thrombosis or embolism.
Synonyms:	Alteplase, Plasminogen activator tissue, Plasminogen activator tissue type, PLAT, Reteplase, t-PA, T-plasminogen activator, Tissue-type plasminogen activator chain B, tPA, TPA_HUMAN
Detection Kit Type:	ELISA Kit
Detection Range:	31.2 pg/ml - 2000 pg/ml
Sensitivity:	<10 pg/ml

Target Details

Gene Name:	PLAT
Reactivity:	Human
Immunogen:	Expression system for standard: CHO; Immunogen sequence: M1-P562
Purity/Specificity:	Natural and recombinant human PLAT. There is no detectable cross-reactivity with other relevant proteins.

Relevant Links:	<ul style="list-style-type: none">• UniProtKB - P00750• NCBI - NP_000921.1• GeneID - 5327• KOA0538 Protocol
------------------------	--

Application Details

Tested Applications:	ELISA
Application Note:	Useful in Sandwich ELISA for Quantitative Detection of Antigen. Aliquot 0.1ml per well of the 2000pg/ml, 1000pg/ml, 500pg/ml, 250pg/ml, 125pg/ml, 62.5pg/ml, 31.2pg/ml human PLAT standard solutions into the precoated 96-well plate. Add 0.1ml of the sample diluent buffer into the control well (Zero well). Add 0.1ml of each properly diluted sample of human cell culture supernates, serum, plasma (heparin, EDTA, citrate) or urine to each empty well. It is recommended that each human PLAT standard solution and each sample be measured in duplicate.
Assay Dilutions:	All assays should be optimized by the user. Recommended dilutions (if any) may be listed below.
Other:	DOE: 2-8° C - 12/25/18 -20° C - 06/25/19

Formulation

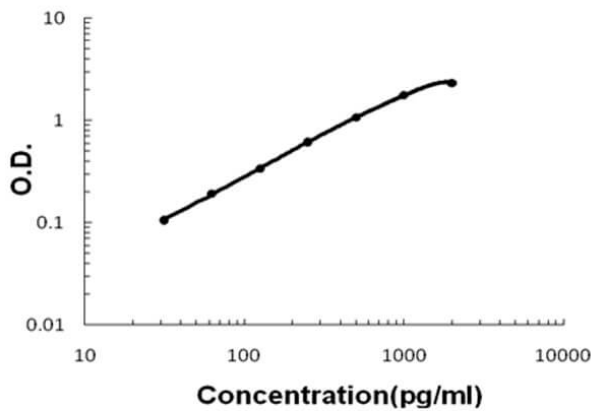
Concentration:	1 Kit
Anticoagulant:	Heparin Sodium

Shipping & Handling

Shipping Condition:	Wet Ice
Storage Condition:	Store vials at 4°C prior to opening. Centrifuge product if not completely clear after standing at room temperature. This product is stable for 6 months at 4°C as an undiluted liquid. Dilute only prior to immediate use. For extended storage freeze at -20°C or below for 12 months. Avoid cycles of freezing and thawing.
Expiration:	See kit insert for complete instructions.

Images

Human PLAT ELISA Kit



ELISA

Human PLAT/TPA AccuSignal ELISA Kit standard curve. Assay Range: 31.2pg/ml-2000pg/ml. Sensitivity: <10pg/ml.

Disclaimer

This product is for research use only and is not intended for therapeutic or diagnostic applications. Please contact a technical service representative for more information. All products of animal origin manufactured by Rockland Immunochemicals are derived from starting materials of North American origin. Collection was performed in United States Department of Agriculture (USDA) inspected facilities and all materials have been inspected and certified to be free of disease and suitable for exportation. All properties listed are typical characteristics and are not specifications. All suggestions and data are offered in good faith but without guarantee as conditions and methods of use of our products are beyond our control. All claims must be made within 30 days following the date of delivery. The prospective user must determine the suitability of our materials before adopting them on a commercial scale. Suggested uses of our products are not recommendations to use our products in violation of any patent or as a license under any patent of Rockland Immunochemicals, Inc. If you require a commercial license to use this material and do not have one, then return this material, unopened to: Rockland Inc., P.O. BOX 5199, Limerick, Pennsylvania, USA.