

Datasheet for KOA0499

Mouse RBP4 ELISA Kit**Overview**

Description:	Mouse RBP4 AccuSignal ELISA Kit - KOA0499
Item No.:	KOA0499
Size:	1 Kit
Applications:	ELISA
Reactivity:	Mouse
Range:	312 pg/ml - 20000 pg/ml

Product Details

Background:	Retinol binding protein 4, plasma, also known as RBP4, belongs to the lipocalin family and is the specific carrier for retinol(vitamin A alcohol) in the blood. It is protein that it is encoded by the RBP4 gene. RBP4 gene resides just centromeric of the cluster of CYP2C genes on 10q24. The mouse Rbp4 locus is closely linked and just proximal to the locus for phenobarbital-inducible cytochrome P450-2c(Cyp-2c) at the distal end of chromosome 19. It delivers retinol from the liver stores to the peripheral tissues. In plasma, the RBP-retinol complex interacts with transthyretin, which prevents its loss by filtration through the kidney glomeruli. A deficiency of vitamin A blocks secretion of the binding protein post translationally and results in defective delivery and supply to the epidermal cells. The standard product used in this kit are recombinant mouse B7-1/CD80, D37—K245, consisting of dimer acids with two single stranded. The standard used in this kit is recombinant protein, with E19-L201 aa sequence, the molecular weight is 22kda.
Synonyms:	Plasma retinol binding protein, Plasma retinol-binding protein, Plasma retinol-binding protein(1-176), PRBP, PRO2222, RBP, RBP4, RDCCAS, RET4_HUMAN, Retinol binding protein 4, Retinol binding protein 4 interstitial, Retinol binding protein 4 plasma
Detection Kit Type:	ELISA Kit
Detection Range:	312 pg/ml - 20000 pg/ml
Sensitivity:	<10 pg/ml

Target Details

Gene Name:	RBP4
-------------------	------

Reactivity:	Mouse
Immunogen:	Expression system for standard: NSO; Immunogen sequence: E19-L201
Purity/Specificity:	Natural and recombinant mouse RBP4. There is no detectable cross-reactivity with other relevant proteins.
Relevant Links:	<ul style="list-style-type: none">• UniProtKB - H7BWY6• NCBI - NP_001152959.1• GenelD - 19662• KOA0499 Protocol

Application Details

Tested Applications:	ELISA
Application Note:	Useful in Sandwich ELISA for Quantitative Detection of Antigen. Aliquot 0.1ml per well of the 20000pg/ml, 10000pg/ml, 5000pg/ml, 2500pg/ml, 1250pg/ml, 625pg/ml, 312pg/ml mouse RBP4 standard solutions into the precoated 96-well plate. Add 0.1ml of the sample diluent buffer into the control well (Zero well). Add 0.1ml of each properly diluted sample of mouse cell culture supernates, serum, plasma(heparin , EDTA) or urine to each empty well. We recommend that each mouse RBP4 standard solution and each sample is measured in duplicate.
Assay Dilutions:	All assays should be optimized by the user. Recommended dilutions (if any) may be listed below.

Formulation

Anticoagulant:	Heparin Sodium
-----------------------	----------------

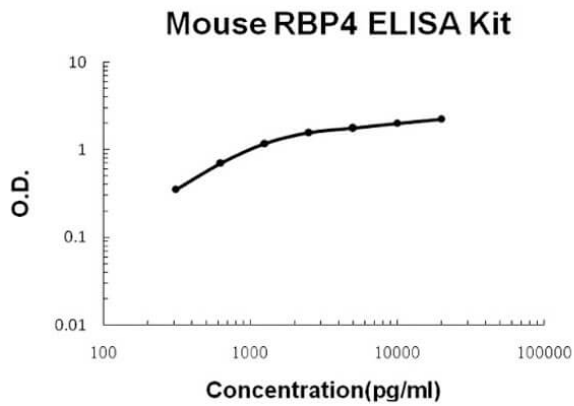
Shipping & Handling

Shipping Condition:	Wet Ice
Storage Condition:	Store vials at 4°C prior to opening. Centrifuge product if not completely clear after standing at room temperature. This product is stable for 6 months at 4°C as an undiluted liquid. Dilute only prior to immediate use. For extended storage freeze at -20°C or below for 12 months. Avoid cycles of freezing and thawing.
Expiration:	See kit insert for complete instructions.

Images

ELISA

Mouse RBP4 AccuSignal ELISA Kit standard curve. Assay
Range: 312pg/ml-20000pg/ml. Sensitivity: <10pg/ml.

**Disclaimer**

This product is for research use only and is not intended for therapeutic or diagnostic applications. Please contact a technical service representative for more information. All products of animal origin manufactured by Rockland Immunochemicals are derived from starting materials of North American origin. Collection was performed in United States Department of Agriculture (USDA) inspected facilities and all materials have been inspected and certified to be free of disease and suitable for exportation. All properties listed are typical characteristics and are not specifications. All suggestions and data are offered in good faith but without guarantee as conditions and methods of use of our products are beyond our control. All claims must be made within 30 days following the date of delivery. The prospective user must determine the suitability of our materials before adopting them on a commercial scale. Suggested uses of our products are not recommendations to use our products in violation of any patent or as a license under any patent of Rockland Immunochemicals, Inc. If you require a commercial license to use this material and do not have one, then return this material, unopened to: Rockland Inc., P.O. BOX 5199, Limerick, Pennsylvania, USA.