

Datasheet for KOA0449

Mouse Galectin-1 ELISA Kit

Overview

Description:	Mouse Galectin-1 AccuSignal ELISA Kit - KOA0449
Item No.:	KOA0449
Size:	1 Kit
Applications:	ELISA
Reactivity:	Mouse
Range:	156 pg/ml - 10000 pg/ml

Product Details

Background:	Galectin-1 is a protein that in humans is encoded by the LGALS1 gene. The galectins are a family of beta-galactoside-binding proteins implicated in modulating cell-cell and cell-matrix interactions. LGALS1 may act as an autocrine negative growth factor that regulates cell proliferation. Baldini et al. stated that the mouse beta-galactoside-binding protein is an autocrine regulator of cell proliferation with a role in the maintenance of G0 and in the control of G2 traverse. They found that galectin-1 was expressed in a subset of slowly dividing subventricular zone astrocytes, which included the neural stem cells. Intraventricular infusion experiments and phenotypic analysis of knockout mice showed that galectin-1 was an endogenous factor that promoted the proliferation of neural stem cells in adult mouse brain. The standard product used in this kit is recombinant mouse GALECTIN-1, Ala2-Glu135, with the molecular mass of 15KDa.
Synonyms:	14 kDa laminin-binding protein, 14 kDa lectin, Beta galactoside binding protein 14kDa, Beta-galactoside-binding lectin L-14-I, Gal-1, GAL1, Galaptin, Galectin-1, GBP, HBL, HLBP14, HPL Lactose-binding lectin 1, Lectin galactoside-binding soluble 1, LEG1_HUMAN, LGALS1, Putative MAPK-activating protein PM12, S-Lac lectin 1
Detection Kit Type:	ELISA Kit
Detection Range:	156 pg/ml - 10000 pg/ml
Sensitivity:	<5 pg/ml

Target Details

Gene Name:	LGALS1
-------------------	--------

Reactivity:	Mouse
Immunogen:	Expression system for standard: E.coli; Immunogen sequence: A2-E135
Purity/Specificity:	Natural and recombinant mouse Galectin-1. There is no detectable cross-reactivity with other relevant proteins.
Relevant Links:	<ul style="list-style-type: none">• UniProtKB - P16045• NCBI - NP_032521.1• GenelD - 16852• KOA0449 Protocol

Application Details

Tested Applications:	ELISA
Application Note:	Useful in Sandwich ELISA for Quantitative Detection of Antigen. Aliquot 0.1ml per well of the 10000pg/ml, 5000pg/ml, 2500pg/ml, 1250pg/ml, 625pg/ml, 312pg/ml, 156pg/ml mouse Galectin-1 standard solutions into the precoated 96-well plate. Add 0.1ml of the sample diluent buffer into the control well (Zero well). Add 0.1ml of each properly diluted sample of mouse cell culture supernates, serum or plasma (heparin, EDTA) to each empty well. It is recommended that each mouse Galectin-1 standard solution and each sample be measured in duplicate.
Assay Dilutions:	All assays should be optimized by the user. Recommended dilutions (if any) may be listed below.

Formulation

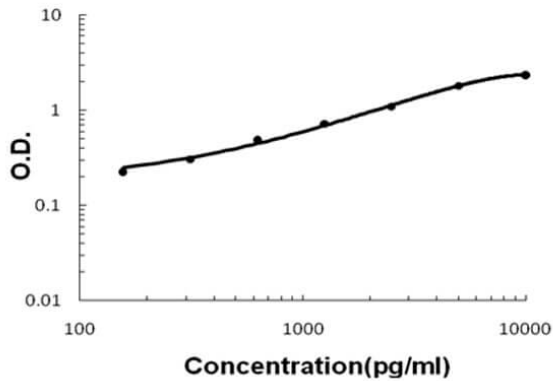
Anticoagulant:	Heparin Sodium
-----------------------	----------------

Shipping & Handling

Shipping Condition:	Wet Ice
Storage Condition:	Store vials at 4°C prior to opening. Centrifuge product if not completely clear after standing at room temperature. This product is stable for 6 months at 4°C as an undiluted liquid. Dilute only prior to immediate use. For extended storage freeze at -20°C or below for 12 months. Avoid cycles of freezing and thawing.
Expiration:	See kit insert for complete instructions.

Images

Mouse Galectin-1 ELISA Kit



ELISA

Mouse Galectin-1 AccuSignal ELISA Kit standard curve. Assay Range: 156pg/ml-10000pg/ml. Sensitivity: <5pg/ml.

Disclaimer

This product is for research use only and is not intended for therapeutic or diagnostic applications. Please contact a technical service representative for more information. All products of animal origin manufactured by Rockland Immunochemicals are derived from starting materials of North American origin. Collection was performed in United States Department of Agriculture (USDA) inspected facilities and all materials have been inspected and certified to be free of disease and suitable for exportation. All properties listed are typical characteristics and are not specifications. All suggestions and data are offered in good faith but without guarantee as conditions and methods of use of our products are beyond our control. All claims must be made within 30 days following the date of delivery. The prospective user must determine the suitability of our materials before adopting them on a commercial scale. Suggested uses of our products are not recommendations to use our products in violation of any patent or as a license under any patent of Rockland Immunochemicals, Inc. If you require a commercial license to use this material and do not have one, then return this material, unopened to: Rockland Inc., P.O. BOX 5199, Limerick, Pennsylvania, USA.