

## Datasheet for KOA0443

**Human Emmprin ELISA Kit****Overview**

<b>Description:</b>	Human Emmprin AccuSignal ELISA Kit - KOA0443
<b>Item No.:</b>	KOA0443
<b>Size:</b>	1 Kit
<b>Applications:</b>	ELISA
<b>Reactivity:</b>	Human
<b>Range:</b>	31.2 pg/ml - 2000 pg/ml

**Product Details**

<b>Background:</b>	Basigin is a member of the immunoglobulin superfamily that is also known as EMMPRIN, short for extracellular matrix metalloproteinase inducer, and recently has been designated CD147 (cluster of differentiation 147). It is a member of the immunoglobulin superfamily, with a structure related to the putative primordial form of the family. As members of the immunoglobulin superfamily play fundamental roles in intercellular recognition involved in various immunologic phenomena, differentiation, and development, basigin is thought also to play a role in intercellular recognition (Miyachi et al., 1991; Kanekura et al., 1991). This protein is a determinant for the Ok blood group system. Basigin is a type I integral membrane receptor that has many ligands, including the cyclophilin (CyP) proteins Cyp-A and Cyp-B and certain integrins. It is expressed by many cell types, including epithelial cells, endothelial cells and leukocytes.
<b>Synonyms:</b>	5F7, BASI_HUMAN, Basigin, Bsg, CD147, Collagenase stimulatory factor, EMMPRIN, Extracellular matrix metalloproteinase inducer, Leukocyte activation antigen M6, OK blood group antigen, TCSF, Tumor cell-derived collagenase stimulatory factor
<b>Detection Kit Type:</b>	ELISA Kit
<b>Detection Range:</b>	31.2 pg/ml - 2000 pg/ml
<b>Sensitivity:</b>	<2 pg/ml

**Target Details**

<b>Gene Name:</b>	BSG
<b>Reactivity:</b>	Human

<b>Immunogen:</b>	Expression system for standard: NSO; Immunogen sequence: T25-H205
<b>Purity/Specificity:</b>	Natural and recombinant human Emmprin. There is no detectable cross-reactivity with other relevant proteins.
<b>Relevant Links:</b>	<ul style="list-style-type: none"><li>• <a href="#">UniProtKB - P35613</a></li><li>• <a href="#">NCBI - NP_001719.2</a></li><li>• <a href="#">GenID - 682</a></li><li>• <a href="#">KOA0443 Protocol</a></li></ul>

## Application Details

<b>Tested Applications:</b>	ELISA
<b>Application Note:</b>	Useful in Sandwich ELISA for Quantitative Detection of Antigen. Aliquot 0.1ml per well of the 2000pg/ml, 1000pg/ml, 500pg/ml, 250pg/ml, 125pg/ml, 62.5pg/ml, 31.2pg/ml human Emmprin standard solutions into the precoated 96-well plate. Add 0.1ml of the sample diluent buffer into the control well (Zero well). Add 0.1ml of each properly diluted sample of human cell culture supernates, serum, plasma( heparin, EDTA), saliva, urine or human milk to each empty well. It is recommended that each human Emmprin standard solution and each sample be measured in duplicate.
<b>Assay Dilutions:</b>	All assays should be optimized by the user. Recommended dilutions (if any) may be listed below.

## Formulation

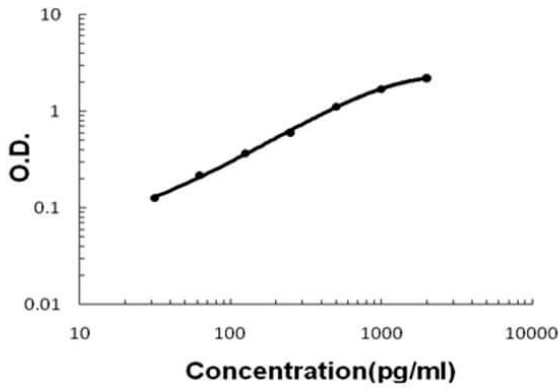
<b>Anticoagulant:</b>	Heparin Sodium
-----------------------	----------------

## Shipping & Handling

<b>Shipping Condition:</b>	Wet Ice
<b>Storage Condition:</b>	Store vials at 4°C prior to opening. Centrifuge product if not completely clear after standing at room temperature. This product is stable for 6 months at 4°C as an undiluted liquid. Dilute only prior to immediate use. For extended storage freeze at -20°C or below for 12 months. Avoid cycles of freezing and thawing.
<b>Expiration:</b>	See kit insert for complete instructions.

## Images

### Human Emmprin ELISA Kit



#### ELISA

Human Emmprin AccuSignal ELISA Kit standard curve. Assay Range: 31.2pg/ml-2000pg/ml. Sensitivity: <2pg/ml.

### Disclaimer

This product is for research use only and is not intended for therapeutic or diagnostic applications. Please contact a technical service representative for more information. All products of animal origin manufactured by Rockland Immunochemicals are derived from starting materials of North American origin. Collection was performed in United States Department of Agriculture (USDA) inspected facilities and all materials have been inspected and certified to be free of disease and suitable for exportation. All properties listed are typical characteristics and are not specifications. All suggestions and data are offered in good faith but without guarantee as conditions and methods of use of our products are beyond our control. All claims must be made within 30 days following the date of delivery. The prospective user must determine the suitability of our materials before adopting them on a commercial scale. Suggested uses of our products are not recommendations to use our products in violation of any patent or as a license under any patent of Rockland Immunochemicals, Inc. If you require a commercial license to use this material and do not have one, then return this material, unopened to: Rockland Inc., P.O. BOX 5199, Limerick, Pennsylvania, USA.