

**Datasheet for KOA0441****Human Decorin ELISA Kit****Overview**

|                      |  |
|----------------------|--|
| <b>Description:</b>  | Human Decorin AccuSignal ELISA Kit - KOA0441 |
| <b>Item No.:</b>     | KOA0441                                      |
| <b>Size:</b>         | 1 Kit  |
| <b>Applications:</b> | ELISA  |
| <b>Reactivity:</b>   | Human  |
| <b>Range:</b>        | 31.2 pg/ml - 2000 pg/ml                      |

**Product Details**

|                            |  |
|----------------------------|--|
| <b>Background:</b>         | Decorin is a proteoglycan on average 90 - 140 kilodaltons(kD) in size. It belongs to the small leucine-rich proteoglycan(SLRP) family and consists of a protein core containing leucine repeats with a glycosaminoglycan(GAG) chain consisting of either chondroitin sulfate(CS) or dermatan sulfate(DS).Using a genomic clone as the labeled probe and in situ hybridization of human metaphase chromosomes, decorin gene was mapped to the discrete region of human chromosome 12q23. Decorin is capable of suppressing the growth of various tumor cell lines when expressed ectopically. |
| <b>Synonyms:</b>           | Bone proteoglycan II, CSCD, DCN, DCN protein, Decorin, Decorin proteoglycan, Dermatan sulphate proteoglycans II, DKFZp686J19238, DSPG 2, DSPG2, PG 40 , PG II, PG S2, PG-S2, PG40, PGII, PGS 2, PGS2, PGS2_HUMAN, Proteoglycan core protein, SLRR1B, Small leucine rich protein 1B   |
| <b>Detection Kit Type:</b> | ELISA Kit  |
| <b>Detection Range:</b>    | 31.2 pg/ml - 2000 pg/ml  |
| <b>Sensitivity:</b>        | <10 pg/ml  |

**Target Details**

|                    |   |
|--------------------|---|
| <b>Gene Name:</b>  | DCN   |
| <b>Reactivity:</b> | Human   |
| <b>Immunogen:</b>  | Expression system for standard: NSO; Immunogen sequence: D31-K359 |

**Purity/Specificity:** Natural and recombinant human Decorin. There is no detectable cross-reactivity with other relevant proteins.

---

**Relevant Links:**

- [UniProtKB - P07585](#)
- [NCBI - NP\\_001911.1](#)
- [GeneID - 1634](#)
- [KOA0441 Protocol](#)

---

## Application Details

**Tested Applications:** ELISA

---

**Application Note:** Useful in Sandwich ELISA for Quantitative Detection of Antigen. Aliquot 0.1ml per well of the 2000pg/ml, 1000pg/ml, 500pg/ml, 250pg/ml, 125pg/ml, 62.5pg/ml, 31.2pg/ml human Decorin standard solutions into the pre-coated 96-well plate. Add 0.1ml of the sample diluent buffer into the control well (Zero well). Add 0.1ml of each properly diluted sample of human cell culture supernates, serum or plasma (heparin, EDTA) to each empty well. It is recommended that each human Decorin standard solution and each sample be measured in duplicate.

---

**Assay Dilutions:** All assays should be optimized by the user. Recommended dilutions (if any) may be listed below.

---

## Formulation

**Anticoagulant:** Heparin Sodium

---

## Shipping & Handling

**Shipping Condition:** Wet Ice

---

**Storage Condition:** Store vials at 4°C prior to opening. Centrifuge product if not completely clear after standing at room temperature. This product is stable for 6 months at 4°C as an undiluted liquid. Dilute only prior to immediate use. For extended storage freeze at -20°C or below for 12 months. Avoid cycles of freezing and thawing.

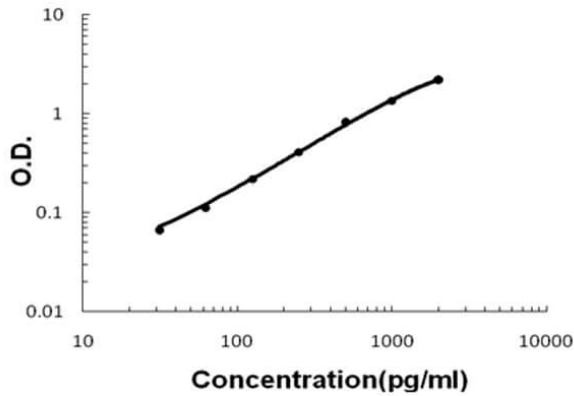
---

**Expiration:** See kit insert for complete instructions.

---

## Images

### Human Decorin ELISA Kit



#### ELISA

Human Decorin AccuSignal ELISA Kit standard curve. Assay Range: 31.2pg/ml-2000pg/ml. Sensitivity: <10pg/ml.

### Disclaimer

This product is for research use only and is not intended for therapeutic or diagnostic applications. Please contact a technical service representative for more information. All products of animal origin manufactured by Rockland Immunochemicals are derived from starting materials of North American origin. Collection was performed in United States Department of Agriculture (USDA) inspected facilities and all materials have been inspected and certified to be free of disease and suitable for exportation. All properties listed are typical characteristics and are not specifications. All suggestions and data are offered in good faith but without guarantee as conditions and methods of use of our products are beyond our control. All claims must be made within 30 days following the date of delivery. The prospective user must determine the suitability of our materials before adopting them on a commercial scale. Suggested uses of our products are not recommendations to use our products in violation of any patent or as a license under any patent of Rockland Immunochemicals, Inc. If you require a commercial license to use this material and do not have one, then return this material, unopened to: Rockland Inc., P.O. BOX 5199, Limerick, Pennsylvania, USA.