

Datasheet for KHF001

Formaldehyde Fixative 16% (w/v) Ultrapure EM Grade (5 pack - 10 ml per ampule) MaxTag™ Histo for IHC**Overview**

Description:	Formaldehyde Fixative 16% (w/v) Ultrapure EM Grade (5 pack - 10 ml per ampule) MaxTag™ Histo for IHC - KHF001
Item No.:	KHF001
Size:	1 Pack
Applications:	IHC, ChIP

Product Details

Background:	Formaldehyde can be utilized for both reversible and irreversible fixation of tissues by cross-linking of amino groups to nitrogen atoms of other proximal proteins or DNA. Formaldehyde can be utilized in ChIP experiments as well as a denaturant for RNA (preventing RNA folding to secondary structures). This fixative is designed for fixing tissue samples to be used in microscopy or histology.
Synonyms:	Methanal; Methyl aldehyde; Methylene oxide; Formalin; Formol
Detection Kit Type:	Immunohistochemistry Kit

Application Details

Tested Applications:	IHC
Suggested Applications:	ChIP (Based on references)
Application Note:	Formaldehyde Fixative 16% (w/v) Ultrapure EM Grade (5 pack - 10 ml per ampule) MaxTag™ Histo for IHC is designed for use in immunohistochemistry experiments.
Assay Dilutions:	All assays should be optimized by the user. Recommended dilutions (if any) may be listed below.
IHC:	User Optimized

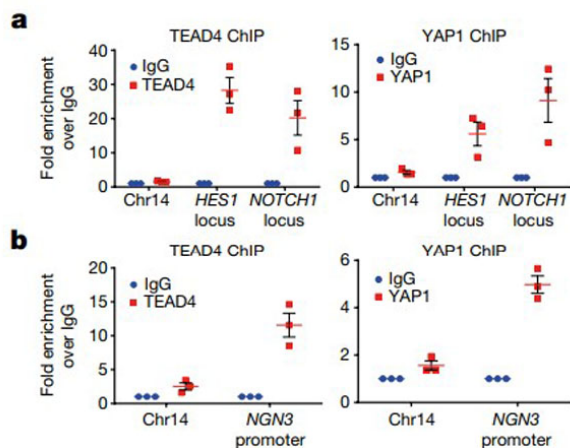
Formulation

Physical State:	Liquid
------------------------	--------

Shipping & Handling

Shipping Condition:	Ambient
Storage Condition:	See kit insert for complete instructions.
Expiration:	See kit insert for complete instructions.

Images



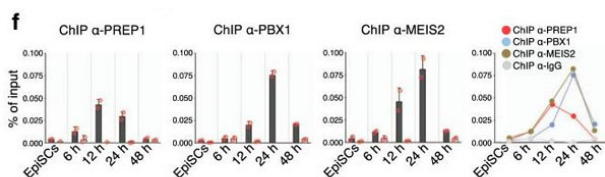
ChIP

Abnormal tip–trunk patterning and impaired differentiation in Yap1 transgenic pancreas. **a**, ChIP–qPCR of human HES1 and NOTCH1 enhancers bound to TEAD4 and YAP1. $n = 3$; data are mean \pm s.e.m. **b**, ChIP–qPCR of a region 250 bp upstream of the ATG start site of the human NGN3 locus bound to TEAD4 and YAP1. Data represent fold enrichment over pull-down with unrelated IgG. Chr14 is used as genomic negative control. $n = 3$; data are mean \pm s.e.m. Cells were fixed with 1% formaldehyde (p/n KHFO01) at room temperature for 10 min. Fig. 3. PMID: 30487608.

ChIP

Sequential recruitment of PBX/HOX-1 complexes to Msn1 promoter changes the chromatin landscape and activates transcription.

(f) ChIP–qPCR analyses of TALE proteins at indicated time-points uncover the peak of PREP1 binding at 12 h and PBX1/MEIS2 at 24 h. Cells were fixed directly on the plate by the addition of 20 ml of PBS containing 1% (v/v) Formaldehyde Fixative Ultrapure EM Grade (p/n KHFO01) for 8–10 min at RT. Fig 6. PMID: 34446717.



References

- Ryu T et al. In-Depth Cell-Type-Specific Proteome Landscape of the Brain from Human Amyloid- β Overexpression Mouse Model. *Adv Sci (Weinh)*. (2025)
- Bock JM et al. Sex-specific impact of obstructive sleep apnea on peripheral blood mononuclear cells. *Sleep Breath*. (2024)
- Mariani L et al. A TALE/HOX code unlocks WNT signalling response towards paraxial mesoderm. *Nat Commun*. (2021)
- Mamidi A et al. Mechanosignalling via integrins directs fate decisions of pancreatic progenitors. *Nature*. (2018)

Disclaimer

This product is for research use only and is not intended for therapeutic or diagnostic applications. Please contact a technical service representative for more information. All products of animal origin manufactured by Rockland Immunochemicals are derived from starting materials of North American origin. Collection was performed in United States Department of Agriculture (USDA) inspected facilities and all materials have been inspected and certified to be free of disease and suitable for exportation. All properties listed are typical characteristics and are not specifications. All suggestions and data are offered in good faith but without guarantee as conditions and methods of use of our products are beyond our control. All claims must be made within 30 days following the date of delivery. The prospective user must determine the suitability of our materials before adopting them on a commercial scale. Suggested uses of our products are not recommendations to use our products in violation of any patent or as a license under any patent of Rockland Immunochemicals, Inc. If you require a commercial license to use this material and do not have one, then return this material, unopened to: Rockland Inc., P.O. BOX 5199, Limerick, Pennsylvania, USA.