

Datasheet for KDA-005

Isotyping Kit: Rapid Mouse Monoclonal Isotyping Kit IsoMax™ - 5 pack

Overview

Description:	Isotyping Kit: Rapid Mouse Monoclonal Isotyping Kit IsoMax™ - 5 pack - KDA-005
Item No.:	KDA-005
Size:	5 Pack
Applications:	ELISA
Reactivity:	Mouse

Product Details

Background:	Use Rockland Immunochemicals' IsoMax™ Rapid Mouse Monoclonal Isotyping Kit for determining the class and subclass of a monoclonal antibody. Isotype determination is a prerequisite for selecting the best immunoglobulin purification method. For example, IgA and IgM are often best purified by size (gel filtration) or on immunoaffinity support columns, whereas IgG2a and IgG2b can be purified by protein A chromatography at a pH of 7 to 8. IgG1 binds best to protein A at a pH of 8 to 9. Isotype determination is also required if an antibody is to be digested by pepsin or papain as each isotype shows varying sensitivity to enzymatic digestion. Please call technical service for further assistance.
Synonyms:	Isotyping kit, mouse subclass determination, IgG isotype, immunoglobulin isotyping
Detection Kit Type:	Isotyping Kit

Target Details

Reactivity:	Mouse
Purity/Specificity:	Rockland Immunochemicals' IsoMax™ Rapid Mouse Monoclonal Isotyping Kit is a rapid (5 minute) lateral flow assay with sensitivity equal to ELISA for monoclonal antibody class and subclass determination. The assay is designed to test antibody present in tissue culture supernatant or mouse ascites fluid. This kit contains 5 packs of 2 cassettes each sufficient for testing up to 5 samples. Please read the entire product insert prior to use.
Relevant Links:	<ul style="list-style-type: none">KDA-005 SDSIsotyping Kit Protocol: Rapid Mouse Monoclonal

Application Details

Tested Applications:	ELISA
Application Note:	Each kit contains 5 packs of 2 cassettes each: one cassette for detecting IgG1, IgG2a and IgG2b; the other cassette for detecting IgG3, IgA and IgM. When a properly diluted sample containing a specific isotype antibody is added to the sample well, a specific class and subclass soluble complex is formed with the embedded gold conjugates. These complexes travel the length of the membrane and are resolved on the anti-isotype and anti-class-specific antibody impregnated membrane. A control line will appear on the membrane in the region marked "C" on the cassette indicating a successful run (positive internal control). Typically when antibodies are applied at a concentration of 10 ng/mL the best results are obtained by reading the cassette 5 to 10 minutes after application. Results should NOT be read after 10 minutes.
Assay Dilutions:	All assays should be optimized by the user. Recommended dilutions (if any) may be listed below.
Other:	DOE: NOV2026

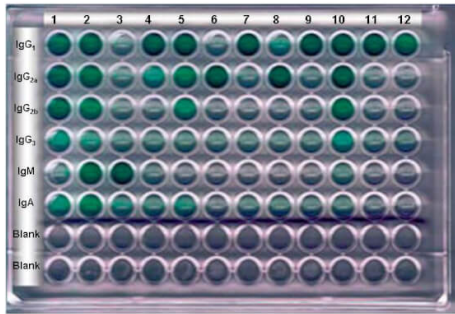
Formulation

Physical State:	n/a
Concentration:	1 Kit Components in this kit are sufficient to run 5 isotype class and subclass determinations.

Shipping & Handling

Shipping Condition:	Ambient
Storage Condition:	See kit insert for complete instructions.
Expiration:	See kit insert for complete instructions.

Images



ELISA

Rockland's IsoMax™ Isotyping Kit compares to an ELISA-format isotyping assay. Results demonstrate outstanding correlation between these two assay formats. The ELISA required controls, an ELISA plate and substrate and took 8 hours of hands-on time to coat the plates, block and subsequently perform the assay using 12 different antibodies. The IsoMax™ Isotyping Kit pipetting time was 10 minutes; all 20 assays were run simultaneously. Each cassette was read at 5 minutes. The total hands-on time for the IsoMax™ Kit, including scoring of the results, was under twenty minutes.



Isotyping Kit

IsoMax™ Rapid Mouse Monoclonal Isotyping Kit results showing that for ascites fluid the darker red line indicates the class or subclass of antibody present. Often an additional weaker red line may appear indicating the presence of host (endogenous) serum immunoglobulins present in the ascites.

Disclaimer

This product is for research use only and is not intended for therapeutic or diagnostic applications. Please contact a technical service representative for more information. All products of animal origin manufactured by Rockland Immunochemicals are derived from starting materials of North American origin. Collection was performed in United States Department of Agriculture (USDA) inspected facilities and all materials have been inspected and certified to be free of disease and suitable for exportation. All properties listed are typical characteristics and are not specifications. All suggestions and data are offered in good faith but without guarantee as conditions and methods of use of our products are beyond our control. All claims must be made within 30 days following the date of delivery. The prospective user must determine the suitability of our materials before adopting them on a commercial scale. Suggested uses of our products are not recommendations to use our products in violation of any patent or as a license under any patent of Rockland Immunochemicals, Inc. If you require a commercial license to use this material and do not have one, then return this material, unopened to: Rockland Inc., P.O. BOX 5199, Limerick, Pennsylvania, USA.