

Datasheet for A003-09

Avidin Texas Red™ Conjugated**Overview**

Description:	Avidin Texas Red™ Conjugated - A003-09
Item No.:	A003-09
Size:	2 mg
Applications:	WB, IHC

Product Details

Background:	Avidin Texas Red™ Conjugated is suitable for multiplex analysis, including multicolor imaging, utilizing various commercial platforms.
Synonyms:	Avidin Texas Red™ Conjugated
Conjugate:	Texas Red®
F/P Ratio:	1.21

Target Details

Purity/Specificity:	Avidin Texas Red™ Conjugated was prepared from chromatographically purified avidin from egg white followed by extensive dialysis against the buffer stated above. Assay by immunoelectrophoresis resulted in a single precipitin arc against anti-Avidin. No reaction was observed against anti-Streptavidin.
Relevant Links:	<ul style="list-style-type: none">• UniProtKB - P02701

Application Details

Tested Applications:	WB
Suggested Applications:	IHC (Based on references)
Application Note:	Avidin Texas Red™ Conjugated has been tested by western blot and is designed for immunofluorescence microscopy, fluorescence based plate assays (FLISA) and fluorescent western blotting.

Assay Dilutions: All assays should be optimized by the user. Recommended dilutions (if any) may be listed below.

FLISA: 1:10,000 - 1:50,000

IF: 1:1,000 - 1:5,000

Formulation

Physical State: Lyophilized

Concentration: 2.0 mg/mL by UV absorbance at 280 nm

Buffer: 0.02 M Potassium Phosphate, 0.15 M Sodium Chloride, pH 7.2

Preservative: 0.01% (w/v) Sodium Azide

Stabilizer: 10 mg/mL Bovine Serum Albumin (BSA) - Immunoglobulin and Protease free

Reconstitution Volume: 1.0 mL

Reconstitution Buffer: Restore with deionized water (or equivalent)

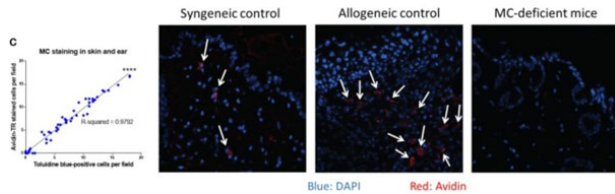
Shipping & Handling

Shipping Condition: Ambient

Storage Condition: Store vial at 4° C prior to restoration. For extended storage aliquot contents and freeze at -20° C or below. Avoid cycles of freezing and thawing. Centrifuge product if not completely clear after standing at room temperature. This product is stable for several weeks at 4° C as an undiluted liquid. Dilute only prior to immediate use.

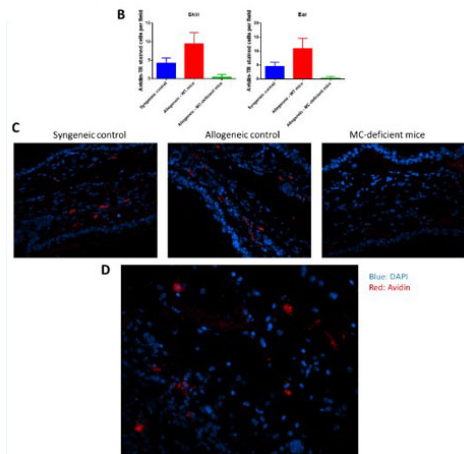
Expiration: Expiration date is one (1) year from date of receipt.

Images



Immunofluorescence Microscopy

Mast cells are increased in allo-WT recipients after murine bone marrow transplant. (C) Mast cell staining by avidin or toluidine blue has a high correspondence across two different skin sections from the same animal [syngeneic (n = 6), allo-WT (n = 16), and allo-MCd (n = 14)]. Representative images from avidin-stained skin (blue = DAPI, red = Avidin). Arrows denote nucleated mast cells. Figure 3. PMID: 31681336.

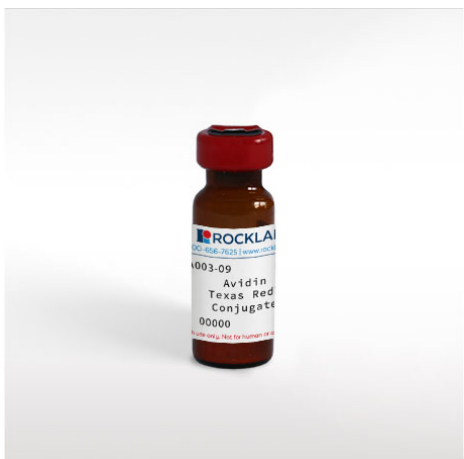


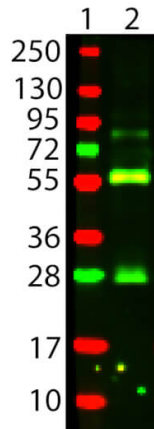
Immunofluorescence Microscopy

Mast cells are present in multiple tissues after transplant and display evident degranulation in allo-WT mice. (B) Skin and ear sections were stained with avidin and mast cells counted per high-power field (blue = DAPI, red = avidin). (C) Representative images of avidin-stained mast cells in the ear. (D) Degranulation was evident in this representative image of skin from allo-WT mice. *P = 0.01–0.05, **P = 0.001–0.01, ***P = 0.0001–0.001, ****P < 0.0001, NS, not significant. SFig 2. PMID: 31681336.

Bottle

Avidin Texas Red™ Conjugated



**Western Blot**

Western Blot of AVIDIN Texas Red™ Conjugated Lane 2:
Biotin conjugated Guinea Pig IgG Load: 100 ng per lane
Secondary antibody: AVIDIN Texas Red™ Conjugated at
1:1,000 for 30 min at RT Block: 1% BSA-TTBS 30 min RT
Predicted/Observed size: 55 and 28 kDa, 55 and 28 kDa

References

- Strattan E et al. Mast cells are mediators of fibrosis and effector cell recruitment in dermal chronic graft-vs.-host disease. *Front Immunol.* (2019)

Disclaimer

This product is for research use only and is not intended for therapeutic or diagnostic applications. Please contact a technical service representative for more information. All products of animal origin manufactured by Rockland Immunochemicals are derived from starting materials of North American origin. Collection was performed in United States Department of Agriculture (USDA) inspected facilities and all materials have been inspected and certified to be free of disease and suitable for exportation. All properties listed are typical characteristics and are not specifications. All suggestions and data are offered in good faith but without guarantee as conditions and methods of use of our products are beyond our control. All claims must be made within 30 days following the date of delivery. The prospective user must determine the suitability of our materials before adopting them on a commercial scale. Suggested uses of our products are not recommendations to use our products in violation of any patent or as a license under any patent of Rockland Immunochemicals, Inc. If you require a commercial license to use this material and do not have one, then return this material, unopened to: Rockland Inc., P.O. BOX 5199, Limerick, Pennsylvania, USA.