

Datasheet for 912-301-D84

Neurofilament M Antibody

Overview

Description:	Anti-Neurofilament M (MOUSE) Antibody - 912-301-D84
Item No.:	912-301-D84
Size:	100 µL
Applications:	IHC, WB
Reactivity:	Human, Mouse, Rat, Bovine, Chicken
Host Species:	Mouse

Product Details

Background:	NF-M antibody detects Neurofilament M protein. Neurofilaments are the 10nm or intermediate filament proteins found specifically in neurons, and are composed predominantly of three major proteins called NF-L, NF-M and NF-H. NF-M is the neurofilament middle or medium molecular weight polypeptide and runs on SDS-PAGE gels at 145-160 kDa, with some variability across species boundaries. Antibodies to NF-M are useful for identifying neuronal cells and their processes in tissue sections and in tissue culture. NF-M antibodies can also be useful to visualize neurofilament accumulations seen in many neurological diseases, such as Amyotrophic Lateral Sclerosis (Lou Gehrig's disease) and Alzheimer's disease. Anti-NF-M antibody is ideal for investigators involved in Cell Signaling and Neuroscience research.
Synonyms:	mouse anti-Neurofilament M Antibody, Neurofilament medium polypeptide, NF-M, 160 kDa neurofilament protein, Neurofilament 3, Neurofilament triplet M protein
Host Species:	Mouse
Clonality:	Monoclonal
Clone ID:	3H11
Format:	IgG1

Target Details

Gene Name:	Nefm
Reactivity:	Human, Mouse, Rat, Bovine, Chicken
Immunogen Type:	Recombinant Protein

Immunogen:	Anti-NF-M Monoclonal Antibody was produced by repeated immunizations with recombinant C-terminus part of NF-M expressed in E. coli.
Purity/Specificity:	Anti-NF-M antibody is directed against NF-M protein. The antibody is protein G purified from concentrated clarified cell culture supernate. Expect reactivity with the following species based on sequence homology: chicken, human, bovine, and mouse. Cross reactivity with NF-M from other species has not been determined.
Relevant Links:	<ul style="list-style-type: none">• UniProtKB - P12839• GeneID - 24588• UniProtKB - P12839.4

Application Details

Tested Applications:	IHC, WB
Application Note:	Anti-NFM antibody is tested for use in Western Blot, IHC, and IF. Expect a band of approximately 145 kDa in size corresponding to the NF-M proteins in the appropriate cell lysate or extract. Researchers should determine optimal titers for applications that are not stated below.
Assay Dilutions:	All assays should be optimized by the user. Recommended dilutions (if any) may be listed below.
IF:	1:100
WB:	1:1000

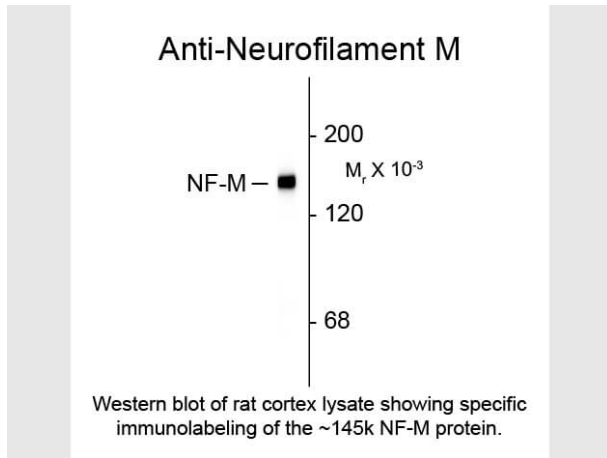
Formulation

Physical State:	Liquid
Buffer:	0.02 M Potassium Phosphate, 0.15 M Sodium Chloride, pH 7.2
Preservative:	0.01% (w/v) Sodium Azide

Shipping & Handling

Shipping Condition:	Dry Ice
Storage Condition:	Store vial at -20° C prior to opening. This product is stable at 4° C as an undiluted liquid. For extended storage, aliquot contents and freeze at -20° C or below. Avoid cycles of freezing and thawing. Dilute only prior to immediate use.
Expiration:	Expiration date is one (1) year from date of receipt.

Images



Western Blot

Western Blot of Mouse anti-Neurofilament M antibody.
Lane 1: Rat cortex lysate. Lane 2: none. Load: 20 μg per lane. Primary antibody: Neurofilament M antibody at 1:1,000 for overnight at 4°C. Secondary antibody: IRDye800™ mouse secondary antibody at 1:10,000 for 45 min at RT. Block: 5% BLOTTO overnight at 4°C. Predicted/Observed size: 145 kDa for Neurofilament M. Other band(s): none.

Disclaimer

This product is for research use only and is not intended for therapeutic or diagnostic applications. Please contact a technical service representative for more information. All products of animal origin manufactured by Rockland Immunochemicals are derived from starting materials of North American origin. Collection was performed in United States Department of Agriculture (USDA) inspected facilities and all materials have been inspected and certified to be free of disease and suitable for exportation. All properties listed are typical characteristics and are not specifications. All suggestions and data are offered in good faith but without guarantee as conditions and methods of use of our products are beyond our control. All claims must be made within 30 days following the date of delivery. The prospective user must determine the suitability of our materials before adopting them on a commercial scale. Suggested uses of our products are not recommendations to use our products in violation of any patent or as a license under any patent of Rockland Immunochemicals, Inc. If you require a commercial license to use this material and do not have one, then return this material, unopened to: Rockland Inc., P.O. BOX 5199, Limerick, Pennsylvania, USA.