

Datasheet for 810-1002

Fab Mouse IgG (H&L) Antibody Rhodamine Conjugated**Overview**

Description:	Goat Fab Anti-Mouse IgG (H&L) Antibody Rhodamine Conjugated - 810-1002
Item No.:	810-1002
Size:	1 mg
Applications:	Dot Blot
Reactivity:	Mouse
Host Species:	Goat

Product Details

Background:	Fab Anti-Mouse IgG (H&L) Rhodamine Antibody generated in goat detects Mouse IgG. This product possesses the F(ab) region possessing the epitope-recognition site, both heavy and light chains of the antibody molecule are present. Secondary Antibodies are available in a variety of formats and conjugate types. When choosing a secondary antibody product, consideration must be given to species and immunoglobulin specificity, conjugate type, fragment and chain specificity, level of cross-reactivity, and host-species source and fragment composition.
Synonyms:	Goat Fab Anti-Mouse IgG Antibody Rhodamine Conjugation, Goat Fab Anti-Mouse IgG TRITC Conjugated Antibody
Host Species:	Goat
Specificity:	IgG (H&L)
Conjugate:	Rhodamine (TRITC)
Clonality:	Polyclonal
Format:	IgG Fab
F/P Ratio:	0.2

Target Details

Reactivity:	Mouse
Immunogen:	Mouse IgG whole molecule

Purity/Specificity: This product was prepared from monospecific antiserum by immunoaffinity chromatography using Mouse IgG coupled to agarose beads followed by solid phase adsorption(s) to remove any unwanted reactivities, papain digestion and chromatographic separation. Assay by immunoelectrophoresis resulted in a single precipitin arc against anti-Goat Serum. No reaction was observed against anti-Papain or anti-Goat IgG F(c).

Application Details

Tested Applications:	Dot Blot
Application Note:	Fab Anti-Mouse IgG (H&L) Rhodamine Antibody has been tested by dot blot and is suitable for immunomicroscopy and flow cytometry or FACS analysis as well as other antibody based fluorescent assays requiring extremely low background levels, absence of F(c) mediated binding, lot-to-lot consistency, high titer and specificity. This product is also suitable for multiplex analysis, including multicolor imaging, utilizing various commercial platforms.
Assay Dilutions:	All assays should be optimized by the user. Recommended dilutions (if any) may be listed below.
FC:	1:500 - 1:2,500
FLISA:	1:10,000 - 1:50,000
IF:	1:1,000 - 1:5,000

Formulation

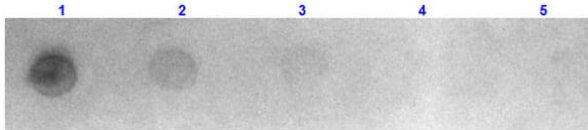
Physical State:	Lyophilized
Concentration:	1.0 mg/mL by UV absorbance at 280 nm
Buffer:	0.02 M Potassium Phosphate, 0.15 M Sodium Chloride, pH 7.2
Preservative:	0.01% (w/v) Sodium Azide
Stabilizer:	10 mg/mL Bovine Serum Albumin (BSA) - Immunoglobulin and Protease free
Reconstitution Volume:	1.0 mL
Reconstitution Buffer:	Restore with deionized water (or equivalent)

Shipping & Handling

Shipping Condition:	Ambient
----------------------------	---------

Storage Condition:	Store vial at 4° C prior to restoration. For extended storage aliquot contents and freeze at -20° C or below. Avoid cycles of freezing and thawing. Centrifuge product if not completely clear after standing at room temperature. This product is stable for several weeks at 4° C as an undiluted liquid. Dilute only prior to immediate use.
Expiration:	Expiration date is one (1) year from date of receipt.

Images



Dot Blot

Dot Blot results of Goat Fab Anti-Mouse IgG Antibody Rhodamine Conjugated. Dots are Mouse IgG at (1) 100ng, (2) 33.3ng, (3) 11.1ng, (4) 3.70ng, (5) 1.23ng. Blocking: MB-070 for 60 min at RT. Primary Antibody: none. Secondary Antibody: Goat Fab Anti-Mouse IgG TRITC at 1µg/mL for 1hr at RT. Imaged with BioRad ChemiDoc, Rhodamine filter.

Disclaimer

This product is for research use only and is not intended for therapeutic or diagnostic applications. Please contact a technical service representative for more information. All products of animal origin manufactured by Rockland Immunochemicals are derived from starting materials of North American origin. Collection was performed in United States Department of Agriculture (USDA) inspected facilities and all materials have been inspected and certified to be free of disease and suitable for exportation. All properties listed are typical characteristics and are not specifications. All suggestions and data are offered in good faith but without guarantee as conditions and methods of use of our products are beyond our control. All claims must be made within 30 days following the date of delivery. The prospective user must determine the suitability of our materials before adopting them on a commercial scale. Suggested uses of our products are not recommendations to use our products in violation of any patent or as a license under any patent of Rockland Immunochemicals, Inc. If you require a commercial license to use this material and do not have one, then return this material, unopened to: Rockland Inc., P.O. BOX 5199, Limerick, Pennsylvania, USA.