

Datasheet for 805-7202**Fab Goat IgG (H&L) Antibody Fluorescein Conjugated****Overview**

Description:	Donkey Fab Anti-Goat IgG (H&L) Antibody Fluorescein Conjugated - 805-7202
Item No.:	805-7202
Size:	1 mg
Applications:	WB
Reactivity:	Goat
Host Species:	Donkey

Product Details

Background:	Fab Anti-Goat IgG Fluorescein Antibody generated in donkey detects goat IgG. This product possesses the F(ab) region possessing the epitope-recognition site, both heavy and light chains of the antibody molecule are present. Secondary Antibodies are available in a variety of formats and conjugate types. When choosing a secondary antibody product, consideration must be given to species and immunoglobulin specificity, conjugate type, fragment and chain specificity, level of cross-reactivity, and host-species source and fragment composition.
Synonyms:	Donkey Fab Anti-Goat Antibody Fluorescein Conjugation, Donkey Fab Anti-Goat FITC Conjugated Antibody
Host Species:	Donkey
Specificity:	IgG (H&L)
Conjugate:	Fluorescein (FITC)
Clonality:	Polyclonal
Format:	IgG Fab
F/P Ratio:	4.0

Target Details

Reactivity:	Goat
Immunogen:	Goat IgG whole molecule

Purity/Specificity: This product was prepared from monospecific antiserum by immunoaffinity chromatography using Goat IgG coupled to agarose beads followed by solid phase adsorption(s) to remove any unwanted reactivities, papain digestion and chromatographic separation. Assay by immunoelectrophoresis resulted in a single precipitin arc against anti-Fluorescein and anti-Donkey Serum. No reaction was observed against anti-papain or anti-Donkey IgG F(c).

Application Details

Tested Applications:	WB
Application Note:	Fab Anti-Goat IgG Fluorescein Antibody has been tested by western blot and is suitable for immunomicroscopy and flow cytometry or FACS analysis as well as other antibody based fluorescent assays requiring extremely low background levels, absence of F(c) mediated binding, lot-to-lot consistency, high titer and specificity.
Assay Dilutions:	All assays should be optimized by the user. Recommended dilutions (if any) may be listed below.
FC:	1:500 - 1:2,500
FLISA:	1:10,000 - 1:50,000
IF:	1:1,000 - 1:5,000

Formulation

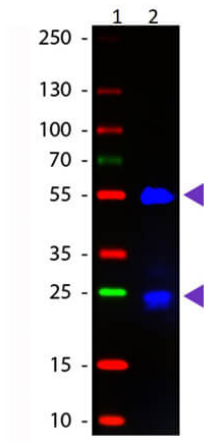
Physical State:	Lyophilized
Concentration:	1.0 mg/mL by UV absorbance at 280 nm
Buffer:	0.02 M Potassium Phosphate, 0.15 M Sodium Chloride, pH 7.2
Preservative:	0.01% (w/v) Sodium Azide
Stabilizer:	10 mg/mL Bovine Serum Albumin (BSA) - Immunoglobulin and Protease free
Reconstitution Volume:	1.0 mL
Reconstitution Buffer:	Restore with deionized water (or equivalent)

Shipping & Handling

Shipping Condition:	Ambient
Storage Condition:	Store vial at 4° C prior to restoration. For extended storage aliquot contents and freeze at -20° C or below. Avoid cycles of freezing and thawing. Centrifuge product if not completely clear after standing at room temperature. This product is stable for several weeks at 4° C as an undiluted liquid. Dilute only prior to immediate use.

Expiration: Expiration date is one (1) year from date of receipt.

Images



Western Blot

Western blot of Fluorescein conjugated Donkey Fab Anti-Goat IgG secondary antibody. Lane 1: Molecular Weight Marker. Lane 2: Goat IgG. Load: 50 ng per lane. Primary antibody: None. Secondary antibody: Fluorescein donkey secondary antibody at 1:1,000 for 60 min at RT. Blocking: MB-070 for 30 min at RT. Predicted/Observed size: 25 & 55 kDa, 25 & 55 kDa for Goat IgG. Other band(s): None.

Disclaimer

This product is for research use only and is not intended for therapeutic or diagnostic applications. Please contact a technical service representative for more information. All products of animal origin manufactured by Rockland Immunochemicals are derived from starting materials of North American origin. Collection was performed in United States Department of Agriculture (USDA) inspected facilities and all materials have been inspected and certified to be free of disease and suitable for exportation. All properties listed are typical characteristics and are not specifications. All suggestions and data are offered in good faith but without guarantee as conditions and methods of use of our products are beyond our control. All claims must be made within 30 days following the date of delivery. The prospective user must determine the suitability of our materials before adopting them on a commercial scale. Suggested uses of our products are not recommendations to use our products in violation of any patent or as a license under any patent of Rockland Immunochemicals, Inc. If you require a commercial license to use this material and do not have one, then return this material, unopened to: Rockland Inc., P.O. BOX 5199, Limerick, Pennsylvania, USA.