

Datasheet for 712-709-149

F(ab')₂ Rat IgG (H&L) Antibody Texas Red™ Conjugated Pre-Adsorbed**Overview**

Description:	Donkey F(ab') ₂ Anti-Rat IgG (H&L) Antibody Texas Red™ Conjugated (Min X Bv Ch Gt GP Ham Hs Hu Ms Rb & Sh Serum Proteins) - 712-709-149
Item No.:	712-709-149
Size:	500 µL
Applications:	WB
Reactivity:	Rat
Host Species:	Donkey

Product Details

Background:	F(ab') ₂ Anti-Rat IgG (H&L) Antibody generated in donkey detects rat IgG. Representing approximately 75% of serum immunoglobulins, IgG is the most abundant antibody isotype found in the circulation. IgG molecules are synthesized and secreted by plasma B cells. Secondary Antibodies are available in a variety of formats and conjugate types. When choosing a secondary antibody product, consideration must be given to species and immunoglobulin specificity, conjugate type, fragment and chain specificity, level of cross-reactivity, and host-species source and fragment composition. F(ab') ₂ Antibody is ideal for investigators who routinely perform flow cytometry, immunofluorescence, IHC, and other immunoassays. This F(ab') ₂ Anti-Rat IgG Antibody is conjugated to Texas Red™.
Synonyms:	Donkey F(ab') ₂ Anti-Rat IgG Texas Red™ Conjugated Pre-Adsorbed Antibody, Donkey Fab2 Anti-Rat IgG Antibody Texas Red™ Conjugation
Host Species:	Donkey
Specificity:	IgG (H&L)
Conjugate:	Texas Red®
Clonality:	Polyclonal
Format:	IgG F(ab') ₂
F/P Ratio:	5.8

Target Details

Reactivity:	Rat
Immunogen:	Rat IgG whole molecule
Purity/Specificity:	This product was prepared from monospecific antiserum by immunoaffinity chromatography using Rat IgG coupled to agarose beads followed by solid phase adsorption(s) to remove any unwanted reactivities, pepsin digestion and chromatographic separation. Assay by immunoelectrophoresis resulted in a single precipitin arc against anti-Donkey Serum, Rat IgG and Rat Serum. No reaction was observed against anti-Pepsin, anti-Donkey IgG F(c) or Bovine, Chicken, Goat, Guinea Pig, Hamster, Horse, Human, Mouse, Rabbit and Sheep Serum Proteins.

Application Details

Tested Applications:	WB
Application Note:	F(ab') ₂ Anti-Rat IgG Texas Red Antibody has been tested by western blot and is designed for immunofluorescence microscopy, fluorescence based plate assays (FLISA) and fluorescent western blotting. This product is also suitable for multiplex analysis, including multicolor imaging, utilizing various commercial platforms requiring extremely low background levels, absence of F(c) mediated binding, lot-to-lot consistency, high titer and specificity.
Assay Dilutions:	All assays should be optimized by the user. Recommended dilutions (if any) may be listed below.
IF:	1:500 - 1:2,500

Formulation

Physical State:	Lyophilized
Concentration:	1.0 mg/mL by UV absorbance at 280 nm
Buffer:	0.02 M Potassium Phosphate, 0.15 M Sodium Chloride, pH 7.2
Preservative:	0.01% (w/v) Sodium Azide
Stabilizer:	10 mg/mL Bovine Serum Albumin (BSA) - Immunoglobulin and Protease free
Reconstitution Volume:	500 µL
Reconstitution Buffer:	Restore with deionized water (or equivalent)

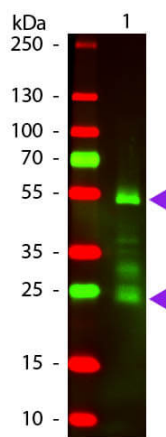
Shipping & Handling

Shipping Condition:	Ambient
----------------------------	---------

Storage Condition: Store vial at 4° C prior to restoration. For extended storage aliquot contents and freeze at -20° C or below. Avoid cycles of freezing and thawing. Centrifuge product if not completely clear after standing at room temperature. This product is stable for several weeks at 4° C as an undiluted liquid. Dilute only prior to immediate use.

Expiration: Expiration date is one (1) year from date of receipt.

Images



Western Blot

Western Blot of Texas Red™ conjugated Donkey F(ab')₂ Anti-Rat IgG Pre-Adsorbed secondary antibody. Lane 1: Rat IgG. Lane 2: None. Load: 50 ng per lane. Primary antibody: None. Secondary antibody: Texas Red™ donkey secondary antibody at 1:1,000 for 60 min at RT. Blocking: MB-070 for 30 min at RT. Predicted/Observed size: 25 & 55 kDa, 25 & 55 kDa for Rat IgG. Other band(s): Rat IgG splice variants and isoforms.

Disclaimer

This product is for research use only and is not intended for therapeutic or diagnostic applications. Please contact a technical service representative for more information. All products of animal origin manufactured by Rockland Immunochemicals are derived from starting materials of North American origin. Collection was performed in United States Department of Agriculture (USDA) inspected facilities and all materials have been inspected and certified to be free of disease and suitable for exportation. All properties listed are typical characteristics and are not specifications. All suggestions and data are offered in good faith but without guarantee as conditions and methods of use of our products are beyond our control. All claims must be made within 30 days following the date of delivery. The prospective user must determine the suitability of our materials before adopting them on a commercial scale. Suggested uses of our products are not recommendations to use our products in violation of any patent or as a license under any patent of Rockland Immunochemicals, Inc. If you require a commercial license to use this material and do not have one, then return this material, unopened to: Rockland Inc., P.O. BOX 5199, Limerick, Pennsylvania, USA.