

Datasheet for 710-1832

F(ab')₂ Mouse IgG (H&L) Antibody Phycoerythrin conjugated Pre-adsorbed

Overview

Description:	Goat F(ab') ₂ Anti-Mouse IgG (H&L) Antibody Phycoerythrin Conjugated (Min X Bv, Ham, Hs, Hu Rb, Rt, & Sh Serum Proteins) - 710-1832
Item No.:	710-1832
Size:	500 µg
Applications:	Dot Blot, WB
Reactivity:	Mouse
Host Species:	Goat

Product Details

Background:	F(ab') ₂ Anti-Mouse IgG (H&L) Antibody was generated in goat and detects specifically Mouse IgG. Secondary Antibodies are available in a variety of formats and conjugate types. When choosing a secondary antibody product, consideration must be given to species and immunoglobulin specificity, conjugate type, fragment and chain specificity, level of cross-reactivity, and host-species source and fragment composition.
Synonyms:	Goat F(ab') ₂ Anti-Mouse IgG Antibody Phycoerythrin Conjugation, Goat Fab2 Anti-Mouse IgG PE conjugated Antibody
Host Species:	Goat
Specificity:	IgG (H&L)
Conjugate:	R-Phycoerythrin (RPE)
Clonality:	Polyclonal
Format:	IgG F(ab') ₂

Target Details

Reactivity:	Mouse
Immunogen:	F(ab') ₂ anti-Mouse IgG (H&L) was produced by repeated immunization with Mouse IgG whole molecule in goat.

Purity/Specificity: F(ab')₂ Anti-MOUSE IgG (H&L) (GOAT) Antibody was prepared from monospecific antiserum by immunoaffinity chromatography using Mouse IgG coupled to agarose beads followed by solid phase adsorption(s) to remove any unwanted reactivities, pepsin digestion and chromatographic separation. F(ab')₂ Anti-MOUSE IgG (H&L) (GOAT) Antibody assays by immunoelectrophoresis resulted in a single precipitin arc against anti-Phycoerythrin, anti-Goat Serum, Mouse IgG and Mouse Serum. No reaction was observed against anti-Pepsin, anti-Goat IgG F(c) or Bovine Chicken Goat Guinea Pig Horse Hamster Human Rabbit Rat and Sheep Serum Proteins.

Application Details

Tested Applications: Dot Blot, WB

Application Note: F(ab')₂ Anti-Mouse IgG (H&L) Phycoerythrin Conjugated Antibody has been tested by dot blot and western blot and is suitable for immunomicroscopy and flow cytometry or FACS analysis as well as other antibody based fluorescent assays requiring extremely low background levels, absence of F(c) mediated binding, lot-to-lot consistency, high titer and specificity. The maximum amount of reagent required to stain 1 x 10⁶ cells in flow cytometry is approximately 1.0 µg of antibody conjugate. Lesser amounts of reagent may be sufficient for staining. Optimal titers for other applications should be determined by the researcher. As a general guideline dilutions of 1:100 to 1:250 should be suitable for most applications.

Assay Dilutions: All assays should be optimized by the user. Recommended dilutions (if any) may be listed below.

FC: 1:100 - 1:250

IF: 1:100 - 1:250

Formulation

Physical State: Lyophilized

Concentration: 0.5 mg/mL by UV absorbance = 82.0 at 565 nm

Buffer: 0.02 M Potassium Phosphate, 0.15 M Sodium Chloride, pH 7.2

Preservative: 0.01% (w/v) Sodium Azide

Stabilizer: 10 mg/mL Bovine Serum Albumin (BSA) - Immunoglobulin and Protease free

Reconstitution Volume: 1.0 mL

Reconstitution Buffer: Restore with deionized water (or equivalent)

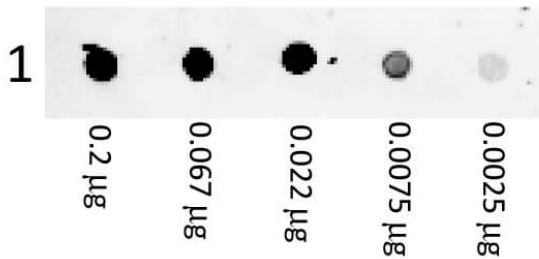
Shipping & Handling

Shipping Condition: Ambient

Storage Condition: Store vial at 4° C prior to restoration. Restore with deionized water (or equivalent). This product is stable at 4° C as an undiluted liquid. Dilute only prior to immediate use. Centrifuge product if not completely clear after standing at room temperature. Do not freeze after reconstitution. Store reagent in the dark. Use subdued lighting during handling and incubation of cells prior to analysis.

Expiration: Expiration date is one (1) year from date of receipt.

Images



Dot Blot

Dot Blot of Phycoerythrin conjugated Goat F(ab')₂ Anti Mouse IgG (H&L) Antibody. Lane 1: Mouse IgG. Load: A three-fold serial dilution starting at 200ng. Primary Antibody: None. Secondary Antibody: F(ab')₂ Anti-Mouse IgG (H&L) (GOAT) Antibody Phycoerythrin conjugated secondary antibody was used at 1:1000 for 1 Hour at RT. Blocking: 5% Blotto for 1 Hour at 20°C.

Disclaimer

This product is for research use only and is not intended for therapeutic or diagnostic applications. Please contact a technical service representative for more information. All products of animal origin manufactured by Rockland Immunochemicals are derived from starting materials of North American origin. Collection was performed in United States Department of Agriculture (USDA) inspected facilities and all materials have been inspected and certified to be free of disease and suitable for exportation. All properties listed are typical characteristics and are not specifications. All suggestions and data are offered in good faith but without guarantee as conditions and methods of use of our products are beyond our control. All claims must be made within 30 days following the date of delivery. The prospective user must determine the suitability of our materials before adopting them on a commercial scale. Suggested uses of our products are not recommendations to use our products in violation of any patent or as a license under any patent of Rockland Immunochemicals, Inc. If you require a commercial license to use this material and do not have one, then return this material, unopened to: Rockland Inc., P.O. BOX 5199, Limerick, Pennsylvania, USA.